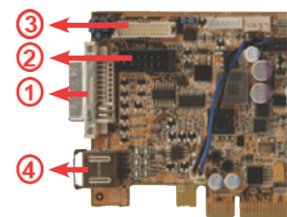
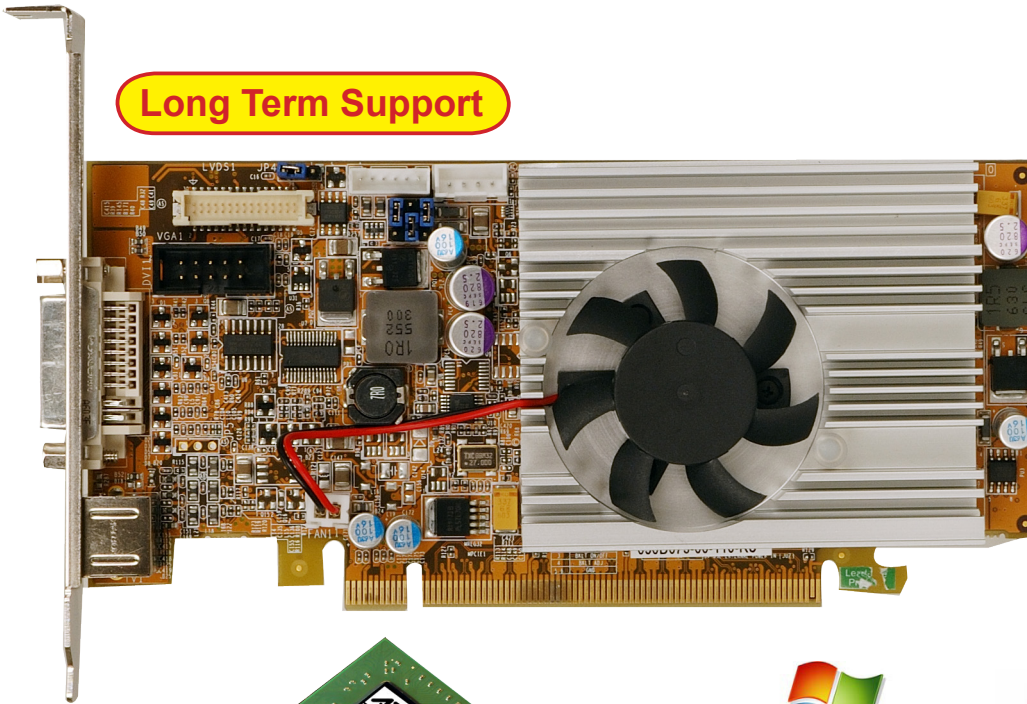


# PVGA-M1600L

Long term support high performance graphic card

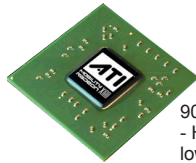
**Long Term Support**



- 1. DVI
- 2. VGA
- 3. LVDS
- 4. HDTV



DVI-I Dual Link



90nm Mobile Graphic  
- Higher performance at lower voltage



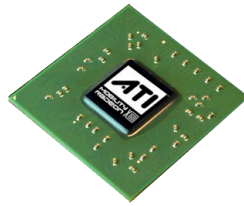
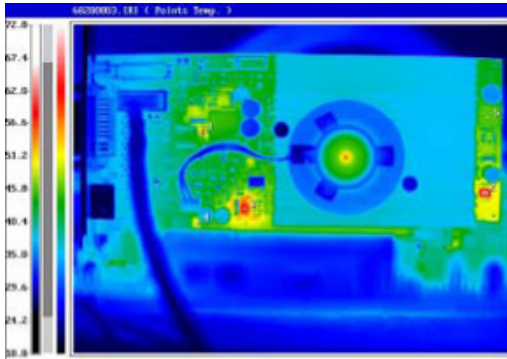
## Feature

1. LOW Power : ATI 1600 mobile (M56 ) graphic chip
2. Low Profile : 8 CM low profile
3. DVI / VGA / LVDS output option
4. PCIe x 16 high performance graphic card
5. Next Generation 3D Engine for Performance and Micro soft vista Leadership
6. Multi-threaded core
7. Performance-enhanced Shader engine

## Specification

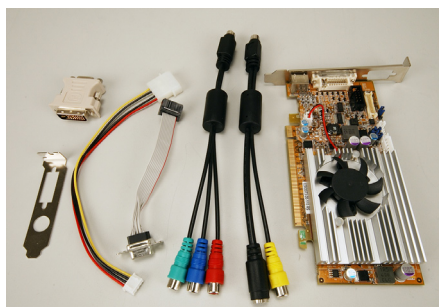
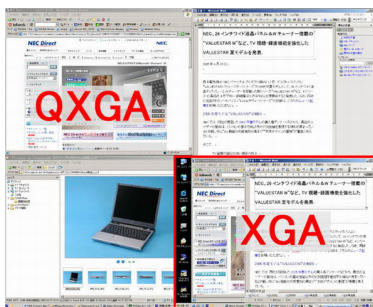
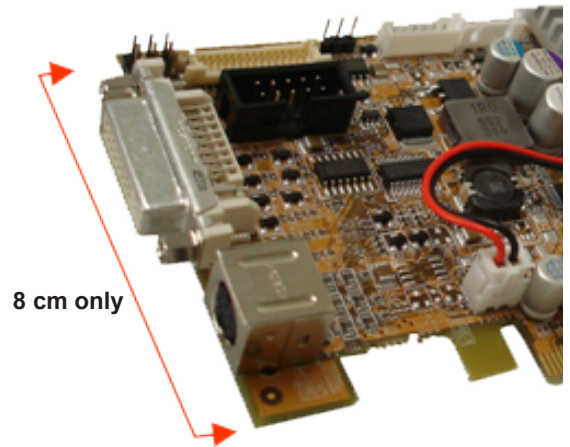
Graphic Engine	ATI Mobility X1600	Max Resolution	2048x1536
Video Memory	256MB GDDR3	LVDS	Dual Channel 24 bit LVDS
Engine Clock	500MHz	HDTV Out	PAL/NTSC upto 1080i
Memory Clock	550MHz	VGA Out	Standard 15-pin D-sub
RAMDAC	400MHz	DVI Output	DVI-I Single/Dual - Link
Bus Standard	PCI Express x 16	2nd VGA Output	Yes, via DVI-VGA adaptor
Memory Interface	128-bit	Cable bundle	S-Video, component cable

## PVGA-M1600L Real time Thermal Testing



The ATI Mobility Radeon X1600 is the first graphics processor to launch from the desktop Radeon X1000 series. The Mobility Radeon X1600 GPU is comprised of 157 million transistors, using latest 90 nm process. It produces smaller transistors, which can be packed into a tighter space while running faster than those created with earlier 110 nm processes.

ASIC	Process	Shader Model	Core Voltage	Engine Clock
M56	90nm	3	1.2V*	500MHz*
Memory Clock	Memory Interface	Memory Support	ASIC TDP	3DMARK 2005
550MHz*	32/64/128-bit	GDDR3	16-17W*	4200*



### HDTV Component Cable

HDTV output with Component, S-Video, Cable support MacroVision / Overscaling, 480P / 720P / 1080i and NTSC / PAL support

## Packing List

1 x PVGA-M1600L Graphic card	1 x Component Cable ( P/N: 32000-083700-RS)
1 x Mini jumper pack	1 x S-Video, RCA Cable ( P/N: 32000-084200-RS)
1 x VGA D-SUB cable ( P/N: 32200-075000-RS)	1 x QIG (quick installation guide)
1 x DVI to VGA adapter ( P/N: 33Z00-000031-RS)	1 x Utility CD

## Ordering Information

Part No.	Description
PVGA-M1600L-R10	LOW PROFILE DVI,VGA,LVDS,AND HDTV FUNCTION GRAPHIC CARD