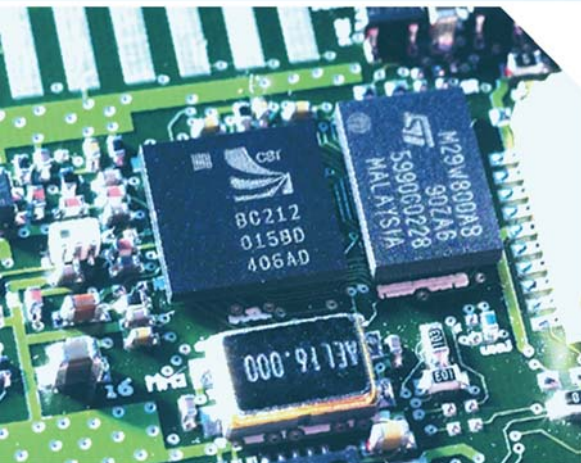




BL-819 & BL-830

CLASS 2 RS232 BLUETOOTH ADAPTOR

'WIRELESS SOLUTIONS ENGINEERED TO EXCEED EXPECTATIONS'



Description

Compact, Award winning Brainboxes RS232 Adaptor allows any device with an RS232 port to communicate with another Bluetooth device without the need for any additional software.

Ideal for Bluetooth enabling 'dumb' RS232 devices such as dataloggers etc. with option to power from Pin 9. Based on fully tested Bluetooth silicon, allowing communications at the full Bluetooth data rates. Integral antenna.

Brainboxes expertise covers every niche of the RS232 adaptor market, with four products including an OEM module.

Features

- Class 2 Bluetooth device
- Suitable for ANY device with serial port
- Handshaking CTS/RTS & DTR/DSR
- Range, Office: 10m Field: 30m subject to local environment conditions
- Power On Pin 9
- Integral Antenna
- Upgradeable onboard flash memory for latest Bluetooth Features
- 4 ways to Configure
- Up to 1.0 Megabaud RS232
- 9 Pin Male and Female Options

[Click on each feature to find similar products](#)

Options



Class 2 RS232 Bluetooth adaptor:
9 Pin Male: BL-819



Class 2 RS232 Bluetooth adaptor:
9 Pin Female: BL-830



Class 1 devices see: BL-521 and BL-730

TEL: +44 (0) 151 220 2500

Software

Four configuration modes tailored to suit every environment:

- o Configuration Utility (for Windows)
- o Remote Configuration Over Bluetooth Link
- o Command line Configuration
- o Bulletin Board Configuration

Also included full product documentation and troubleshooting guide.

Find out about Brainboxes excellent Configuration Utility Software Features: [Click Here](#)



ORDER

Description

CLASS 2 BLUETOOTH RS232 ADAPTOR DTE (9 Pin Male)
CLASS 2 BLUETOOTH RS232 ADAPTOR DCE (9 Pin Female)

Code

BL-819
BL-830



CLASS 2 BLUETOOTH RS232 ADAPTOR

Product Code		BL-521 & BL-730																																																																							
Bluetooth General																																																																									
Bluetooth Qualification	1.1 Qualified																																																																								
Bluetooth Radio																																																																									
Class Of Device	Class 2																																																																								
Radio Frequency	2.4GHz																																																																								
Integral Antenna	Yes																																																																								
Receiver Sensitivity	-83 dBm																																																																								
Output Power	> 0 dBm < +4 dBm																																																																								
Operating Distance (Typical) Metres*	Field: 30m Office: 10m																																																																								
Bluetooth Settings																																																																									
Max Transfer rate (Kb/s)	up to 723																																																																								
Configurable Local Device Name and Device Class	Yes																																																																								
Pairing Options	Enable/disable/link key expiry/2 proximity modes																																																																								
Client and Server Mode	Yes																																																																								
Configurable Discoverability, Security mode and PIN number	Yes																																																																								
PICONET & SCATTERNET capable	Yes																																																																								
PARK and SNIFF mode	Yes																																																																								
Factory Reset	Yes																																																																								
Serial Port Settings																																																																									
Baud Rate (Kb/s)	244 - 921,600																																																																								
Data Bits	8																																																																								
Parity	Odd, Even, None																																																																								
Stop bits	1 or 2																																																																								
Flow Control	RTS/CTS , DTR/DSR																																																																								
	<table border="0"> <tr> <td></td> <td>Female</td> <td>Male</td> <td></td> <td>Male</td> <td></td> <td>Female</td> </tr> <tr> <td>Pin 1</td> <td>N/C</td> <td>N/C</td> <td></td> <td>1 2 3 4 5</td> <td></td> <td>5 4 3 2 1</td> </tr> <tr> <td>Pin 2</td> <td>TXD</td> <td>RXD</td> <td></td> <td></td> <td></td> <td></td> </tr> <tr> <td>Pin 3</td> <td>RXD</td> <td>TXD</td> <td></td> <td></td> <td></td> <td></td> </tr> <tr> <td>Pin 4</td> <td>DSR</td> <td>DTR</td> <td></td> <td></td> <td></td> <td></td> </tr> <tr> <td>Pin 5</td> <td>GND</td> <td>GND</td> <td></td> <td></td> <td></td> <td></td> </tr> <tr> <td>Pin 6</td> <td>DTR</td> <td>DSR</td> <td></td> <td></td> <td></td> <td></td> </tr> <tr> <td>Pin 7</td> <td>CTS</td> <td>RTS</td> <td></td> <td></td> <td></td> <td></td> </tr> <tr> <td>Pin 8</td> <td>RTS</td> <td>CTS</td> <td></td> <td></td> <td></td> <td></td> </tr> <tr> <td>Pin 9</td> <td>Power</td> <td>N/C</td> <td></td> <td>6 7 8 9</td> <td></td> <td>9 8 7 6</td> </tr> </table>		Female	Male		Male		Female	Pin 1	N/C	N/C		1 2 3 4 5		5 4 3 2 1	Pin 2	TXD	RXD					Pin 3	RXD	TXD					Pin 4	DSR	DTR					Pin 5	GND	GND					Pin 6	DTR	DSR					Pin 7	CTS	RTS					Pin 8	RTS	CTS					Pin 9	Power	N/C		6 7 8 9		9 8 7 6		
	Female	Male		Male		Female																																																																			
Pin 1	N/C	N/C		1 2 3 4 5		5 4 3 2 1																																																																			
Pin 2	TXD	RXD																																																																							
Pin 3	RXD	TXD																																																																							
Pin 4	DSR	DTR																																																																							
Pin 5	GND	GND																																																																							
Pin 6	DTR	DSR																																																																							
Pin 7	CTS	RTS																																																																							
Pin 8	RTS	CTS																																																																							
Pin 9	Power	N/C		6 7 8 9		9 8 7 6																																																																			
Bluetooth Security																																																																									
Encryption	'None', 'Point to Point' or 'Point to Point and Broadcast'																																																																								
PIN Authentication	PIN: Select from list or enter custom (16 character limit)																																																																								
Security Levels	Low, Medium & High (Security Mode 1,2 & 3)																																																																								
General																																																																									
Power Source	External Power Device: 550mA @ 5V Or Power On Pin 9: 5V - 13.6 V (BL-819 must be rewired)																																																																								
LED's	Combined power and Bluetooth link LED																																																																								
Power Consumption	Depends on usage, more info CLICK HERE																																																																								
Weight	24g																																																																								
Size WxDxH (mm)	34 x 75 x 18																																																																								
RS232 connector	9 pin male (BL-819) 9 Pin female (BL-830)																																																																								
Interface																																																																									
OS Compatibility	This device is compatible with any product with a serial port																																																																								
Configuration	Windows Utility software or Remote/terminal Config																																																																								
Awards			Winner Microsoft Tech Ed 2005, Mobile Computing Europe: Bluetooth CompactFlash and Bluetooth Serial Connectivity Winner 2005 European Electronics Industry Awards: Manufacturer of the Year																																																																						
Approvals & Accreditations			UL, CE, FCC, Bluetooth Approved																																																																						
Box Contents	Bluetooth RS232 Adaptor Power Supply CD with Utility software, manual, troubleshooting guide and datasheet Quick Start Guide																																																																								
OEM option	Available for bulk buy OEM																																																																								
Product Support	Lifetime Email and Phone Support from fully qualified, friendly staff 40 hours a week																																																																								
Warranty	3 years																																																																								
Made In			Manufactured in the UK by Brainboxes Winner 2005 European Electronics Industry Awards Manufacturer of the Year																																																																						
Customisable	Brainboxes operate a "Perfect Fit Custom Design" policy for volume users More Info: CLICK HERE																																																																								



CLASS 2 BLUETOOTH RS232 ADAPTOR

Product Code		BL-521 & BL-730																																																																						
Bluetooth General																																																																								
Bluetooth Qualification	1.1 Qualified																																																																							
Bluetooth Radio																																																																								
Class Of Device	Class 2																																																																							
Radio Frequency	2.4GHz																																																																							
Integral Antenna	Yes																																																																							
Receiver Sensitivity	-83 dBm																																																																							
Output Power	> 0 dBm < +4 dBm																																																																							
Operating Distance (Typical) Metres*	Field: 30m Office: 10m																																																																							
Bluetooth Settings																																																																								
Max Transfer rate (Kb/s)	up to 723																																																																							
Configurable Local Device Name and Device Class	Yes																																																																							
Pairing Options	Enable/disable/link key expiry/2 proximity modes																																																																							
Client and Server Mode	Yes																																																																							
Configurable Discoverability, Security mode and PIN number	Yes																																																																							
PICONET & SCATTERNET capable	Yes																																																																							
PARK and SNIFF mode	Yes																																																																							
Factory Reset	Yes																																																																							
Serial Port Settings																																																																								
Baud Rate (Kb/s)	244 - 921,600																																																																							
Data Bits	8																																																																							
Parity	Odd, Even, None																																																																							
Stop bits	1 or 2																																																																							
Flow Control	RTS/CTS , DTR/DSR																																																																							
	<table border="0"> <tr> <td></td> <td>Female</td> <td>Male</td> <td></td> <td>Male</td> <td></td> <td>Female</td> </tr> <tr> <td>Pin 1</td> <td>N/C</td> <td>N/C</td> <td></td> <td>1</td> <td></td> <td>5</td> </tr> <tr> <td>Pin 2</td> <td>TXD</td> <td>RXD</td> <td></td> <td>2</td> <td></td> <td>4</td> </tr> <tr> <td>Pin 3</td> <td>RXD</td> <td>TXD</td> <td></td> <td>3</td> <td></td> <td>3</td> </tr> <tr> <td>Pin 4</td> <td>DSR</td> <td>DTR</td> <td></td> <td>4</td> <td></td> <td>2</td> </tr> <tr> <td>Pin 5</td> <td>GND</td> <td>GND</td> <td></td> <td>5</td> <td></td> <td>1</td> </tr> <tr> <td>Pin 6</td> <td>DTR</td> <td>DSR</td> <td></td> <td>6</td> <td></td> <td></td> </tr> <tr> <td>Pin 7</td> <td>CTS</td> <td>RTS</td> <td></td> <td>7</td> <td></td> <td></td> </tr> <tr> <td>Pin 8</td> <td>RTS</td> <td>CTS</td> <td></td> <td>8</td> <td></td> <td></td> </tr> <tr> <td>Pin 9</td> <td>Power</td> <td>N/C</td> <td></td> <td>9</td> <td></td> <td></td> </tr> </table>		Female	Male		Male		Female	Pin 1	N/C	N/C		1		5	Pin 2	TXD	RXD		2		4	Pin 3	RXD	TXD		3		3	Pin 4	DSR	DTR		4		2	Pin 5	GND	GND		5		1	Pin 6	DTR	DSR		6			Pin 7	CTS	RTS		7			Pin 8	RTS	CTS		8			Pin 9	Power	N/C		9			
	Female	Male		Male		Female																																																																		
Pin 1	N/C	N/C		1		5																																																																		
Pin 2	TXD	RXD		2		4																																																																		
Pin 3	RXD	TXD		3		3																																																																		
Pin 4	DSR	DTR		4		2																																																																		
Pin 5	GND	GND		5		1																																																																		
Pin 6	DTR	DSR		6																																																																				
Pin 7	CTS	RTS		7																																																																				
Pin 8	RTS	CTS		8																																																																				
Pin 9	Power	N/C		9																																																																				
Bluetooth Security																																																																								
Encryption	'None', 'Point to Point' or 'Point to Point and Broadcast'																																																																							
PIN Authentication	PIN: Select from list or enter custom (16 character limit)																																																																							
Security Levels	Low, Medium & High (Security Mode 1,2 & 3)																																																																							
General																																																																								
Power Source	External Power Device: 550mA @ 5V Or Power On Pin 9: 5V - 13.6 V (BL-819 must be rewired)																																																																							
LED's	Combined power and Bluetooth link LED																																																																							
Power Consumption	Depends on usage, more info CLICK HERE																																																																							
Weight	24g																																																																							
Size WxDxH (mm)	34 x 75 x 18																																																																							
RS232 connector	9 pin male (BL-819) 9 Pin female (BL-830)																																																																							
Interface																																																																								
OS Compatibility	This device is compatible with any product with a serial port																																																																							
Configuration	Windows Utility software or Remote/terminal Config																																																																							
Awards		Winner Microsoft Tech Ed 2005, Mobile Computing Europe: Bluetooth CompactFlash and Bluetooth Serial Connectivity Winner 2005 European Electronics Industry Awards: Manufacturer of the Year																																																																						
Approvals & Accreditations		UL, CE, FCC, Bluetooth Approved																																																																						
Box Contents	Bluetooth RS232 Adaptor Power Supply CD with Utility software, manual, troubleshooting guide and datasheet Quick Start Guide																																																																							
OEM option	Available for bulk buy OEM																																																																							
Product Support	Lifetime Email and Phone Support from fully qualified, friendly staff 40 hours a week																																																																							
Warranty	3 years																																																																							
Made In			Manufactured in the UK by Brainboxes Winner 2005 European Electronics Industry Awards Manufacturer of the Year																																																																					
Customisable	Brainboxes operate a "Perfect Fit Custom Design" policy for volume users More Info: CLICK HERE																																																																							



CLASS 2 BLUETOOTH RS232 ADAPTOR

Glossary: Product Features Explained

Bluetooth RS232 Adaptor Configuration Utility

Brainboxes Bluetooth RS232 Adaptors have 4 ways to be configured: Configuration Utility, Bulletin Board, Remote Config or Command Line. Shown here is our simple yet complete Configuration Utility, which allows full customisation of a Brainboxes Bluetooth RS232 Adaptor.

Usability that speaks for itself

Bluetooth Device Class

There are 3 classes of Bluetooth device defined to suit different needs:

Class 1 - Long Range

Maximum Output Power of 100mW (20dBm)

Class 2 - Medium Range

Maximum Output Power of 2.5mW (4dBm) most common

Class 3 - Short Range

Maximum Output Power of 1mW (0dBm) very rare

A value of distance cannot be explicitly stated for each device class; every user environment is slightly different, and affects the signal in different ways. The best way to compare devices operating range is by comparing Output Power. A device with a larger output power will be able to communicate with other devices over a further distance. Most Brainboxes devices are class 1 devices with a very powerful Power Output, Brainboxes Bluetooth Class 1 devices have one of the most powerful Bluetooth radios in the industry - 14dBm!



CLASS 2 BLUETOOTH RS232 ADAPTOR

Brainboxes' Service

"Brainboxes offers free lifetime support for ALL customers."



We aim to provide industry leading support for our customers. Our highly trained and helpful support engineers sit and work closely with the product designers, developers, and testers to ensure an in-depth knowledge of the products. Support can be found by emailing support@brainboxes.com or calling: +44 (0)151 220 2500 during UK office hours.

Support website: www.brainboxes.com/support/index.asp

"Brainboxes offers 3 year 'no quibble warranty' on all Bluetooth products."

If, for whatever reason, your Brainboxes Bluetooth device does become dysfunctional Brainboxes are happy to replace it thanks to our "3 year no quibble warranty". Peace of mind for your investment.

Brainboxes' Kaizen

"Brainboxes constantly strives to achieve higher standards for the benefit of customers."



'Kaizen' is a Japanese term meaning 'continuous improvement'. Kaizen has been implemented throughout Brainboxes, resulting in significant improvements to our products and our customer service, as illustrated by the development of our own custom ASIC "LYNX" and our new lifetime warranty. As part of this ongoing process, in 2004 we embarked on 'Lean' and '6 Sigma' programs which are successfully increasing productivity and efficiency in all areas of the company. **More Info:** [Click Here](#)

What Can I do with Bluetooth?

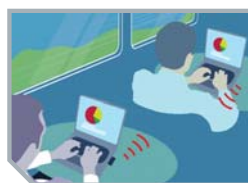
Bluetooth makes the sharing and exchange of information between mobile or static devices as simple as possible. Whether at home, on the move, or in the office it can be used for networking, sharing files, synchronizing information, email, Internet access, printing, and more. In industry it can be used to wirelessly control equipment and machinery - perfect for servicing inaccessible devices.



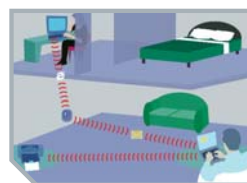
Connect **wirelessly** to a Bluetooth printer to easily **print** copies of your documents



Use Bluetooth in test or manufacturing to **control and monitor** equipment



Create instant **ad-hoc networks** to share files and information



Connect to the **Internet** from anywhere at **home** via a Bluetooth broadband modem



Email anywhere by connecting your laptop or Pocket PC to your Bluetooth phone