

FPM-3150G-XB/XBE

Industrial 15" Transflective Flat Panel Monitor with Direct-VGA Port



Features

- 15" XGA TFT LCD with resolution up to 1024 X 768
- Stainless steel chassis
- NEMA4/IP65-compliant aluminum front panel
- High luminance up to 400 cd/m²
- Auto-recognition of input signal
- Rack, panel or wallmount
- Supports VESA arm, desktop stand
- Anti-reflective screen with tempered glass
- Hard anodic coating to prevent panel abrasion and acid corrosion
- Can be viewed under direct sunlight and outdoors

Introduction

FPM-3150G is a 15-inch color TFT LCD flat panel monitor specifically designed for industrial applications. With a viewing size as large as 15", it presents an ample display area as well as vivid and sharp images for your HMI. FPM-3150G features Direct-VGA signal transmission, which allows a regular VGA control card to be used in your system. Users can thus upgrade the display without making changes to the existing system. Its on screen display function also allows users to adjust the images on the screen with ease. The whole chassis is stainless steel and the front panel is made of aluminum with NEMA4/IP65 compliance. The transflective panel adds several films in the panel to create the transmissive and reflective mode for the LCD so that the panel can be viewed under sunlight or outdoors.

Specifications

General

- **Button Controls** OSD control pad on the front panel
- **Certifications** BSMI, CCC, CE, FCC
- **Dimensions (WxHxD)** 422 x 310 x 86 mm (16.6" x 12.2" x 3.4")
- **Enclosure** Aluminum
- **Mounting** Panel mount, wallmount, desktop, VESA arm, or 19" rackmount with optional mounting kit
- **Power Input** External 48 W power adapter, with AC 100 ~ 240 V input and DC +12 V @ 4 A output
- **Video Ports** VGA
- **Weight (Net)** 6.2 kg (13.6 lb)

LCD Display

- **Backlight Life** 50,000 hrs
- **Contrast Ratio** 500 : 1
- **Display Size** 15"
- **Display Type** XGA TFT LCD
- **Brightness** 400 cd/m²
- **Max. Colors** Full color (16.2 (6 bit + FRC) million)
- **Max. Resolution** 1024 x 768
- **Viewing Angle (H/V°)** 140 / 120
- **Surface Treatment** Optical Compensation Film

Environment

- **Ingress Protection** Front panel: NEMA4/IP65 compliant
- **Operating Temperature** 0 ~ 50° C (32 ~ 122° F)
- **Storing Humidity** 5 ~ 95% non-condensing
- **Storing Temperature** -20 ~ 60° C (-4 ~ 140° F)
- **Vibration (Random)** 5-500 Hz, 1 Grms (Operating)

Optical Characteristics

	Symbol	MIN	TYP	MAX	Unit
Brightness (before rework)	Bwhite	300	400		cd/m ²
Brightness (after rework)	Bwhite	425			cd/m ²
Outdoor Readability					
Ambient Light					cd/m ²
Contrast Ratio (BL off)	35°				
Brightness Gain (BL off)	35°				cd/m ²
Reflectance (net)	35°		1 ~ 2		%

Benefits

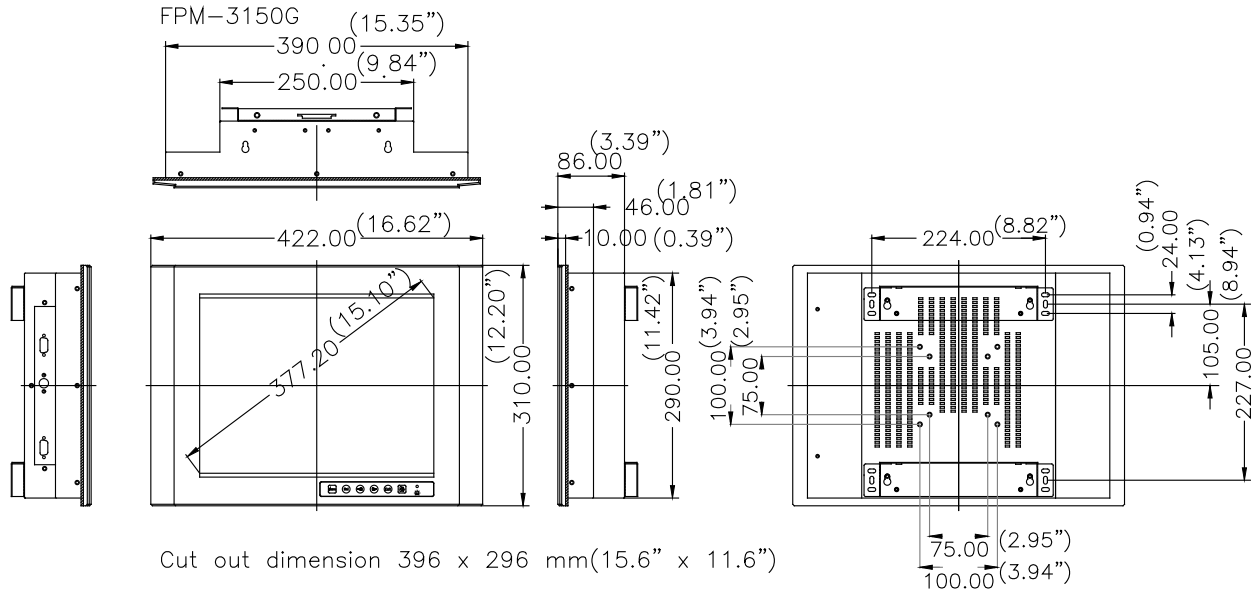
- **Viewable in all lighting conditions including direct sunlight**
- **Incorporation of 65 ~ 75% reflective efficiency**

Ordering Information

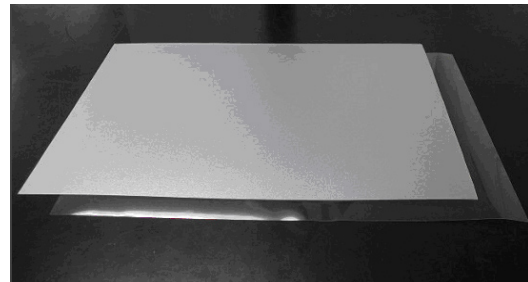
- **FPM3150G6001-T** 15" Direct Sunlight Readable TFT LCD

Dimensions

Unit: mm



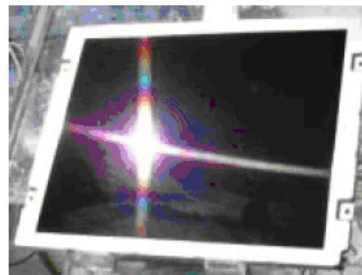
Methodology & Material



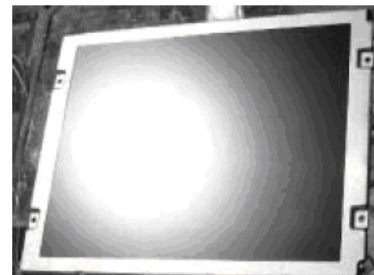
SCREEN COMPARISON UNDER THE DIRECT SUNLIGHT



Transflective type



Low Reflection
 (Transmittal)



Normal : Anti-Glare
 (Transmittal)