



MONITOR SENSORS

Leading the way in Environmental Monitoring
MONITOR SENSORS (AUST.) PTY LTD
A.B.N. 98 077 697 986

Available from Esis Pty Ltd, ph 02 9481 7420

Monitor Sensors Ethernet Interface

Monitor Sensors can supply Ethernet interfaces to SmartLoggers and server software that can automatically retrieve the current readings and historical data from the logger. The retrieved data can be optionally merged into a user supplied web page template and automatically uploaded to a web server by ftp. Two templates are provided – a current readings table and a web graph page.

The program includes a terminal interface that allows the logger to be customised and the data stored by the logger to be retrieved.

A running log of the program operation is saved regularly to help the user resolve any upload problems.

Monitor Sensors WebServer Demo - Microsoft Internet Explorer

Address: <http://www.monitorsensors.com/sensors.php>

Monitor Sensors WebServer Demo : 8/11/2004 11:00:36 AM

no:	id:	@	serial no:	type:	reading:	units:
1	1	m	TA101392	Air temperature	26.000	°C
2	3	m	BP100156	Barometric pressure	1015.80	hPa
3	4	m	RG200065	Rain gauge	0.0	mm
4	5	m	SR200400	Solar radiation	582.8	W/m ²
5	6	m	AN2A0309	Wind speed	11.58	km/h
6	7	m	WD200223	Wind direction	51.45	°
7	8	m	HU100479	Humidity	67.07	%
8	:	m	ET000000	Evapotranspiration	15.35	mm/day
9	;	m	SI100000	Stress index	74.98	stress
10	<	m	BV400000	Battery Voltage	6.79	Volts
11	=	m	DP100000	Dew point	19.396	°C

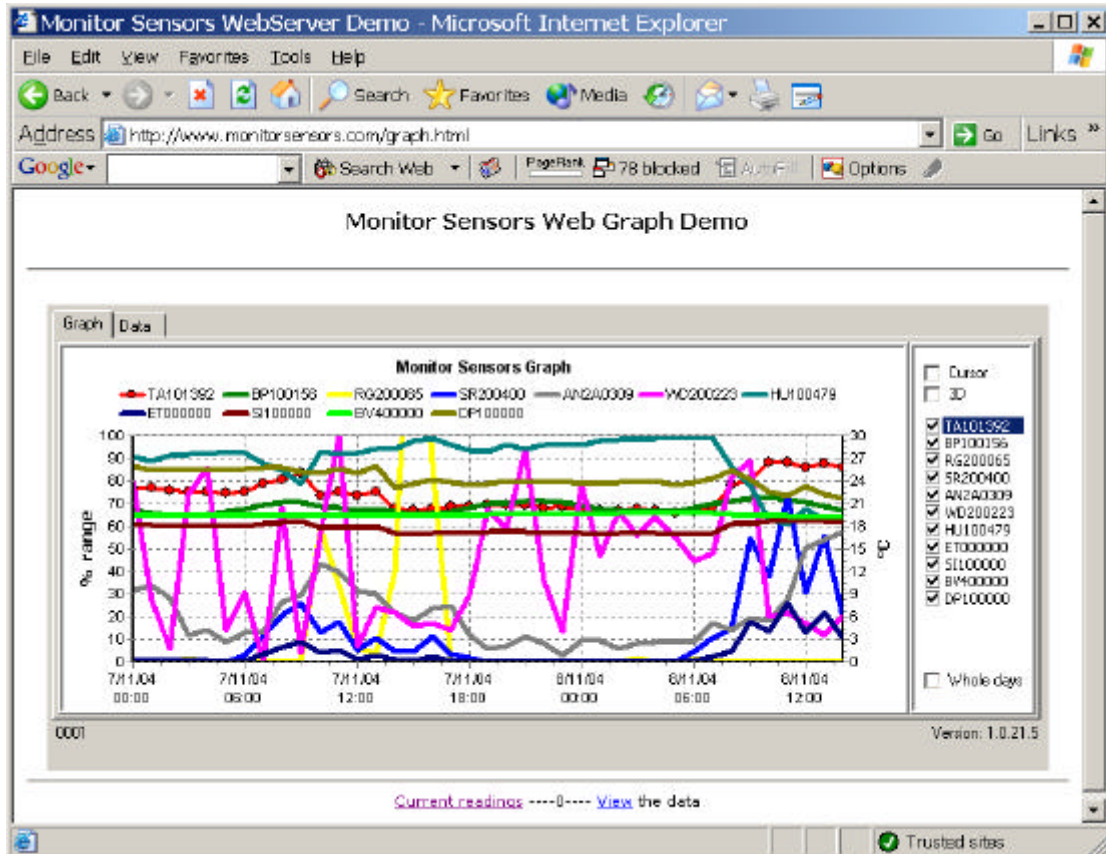
[Graph today & yesterday](#)

This page has been viewed **265** times
© CJ Hit Counter

Trusted sites

Webgraph ActiveX

The web graph ActiveX can be embedded on a web page and allows the user to hide/show individual sensors and to zoom and scroll the graph. A crosshair cursor can be enabled that allows the sensor reading of each data point to be viewed. The web graph ActiveX has includes a tabular view of the data and can allow the graphed data to be saved to a local file in text CSV format.

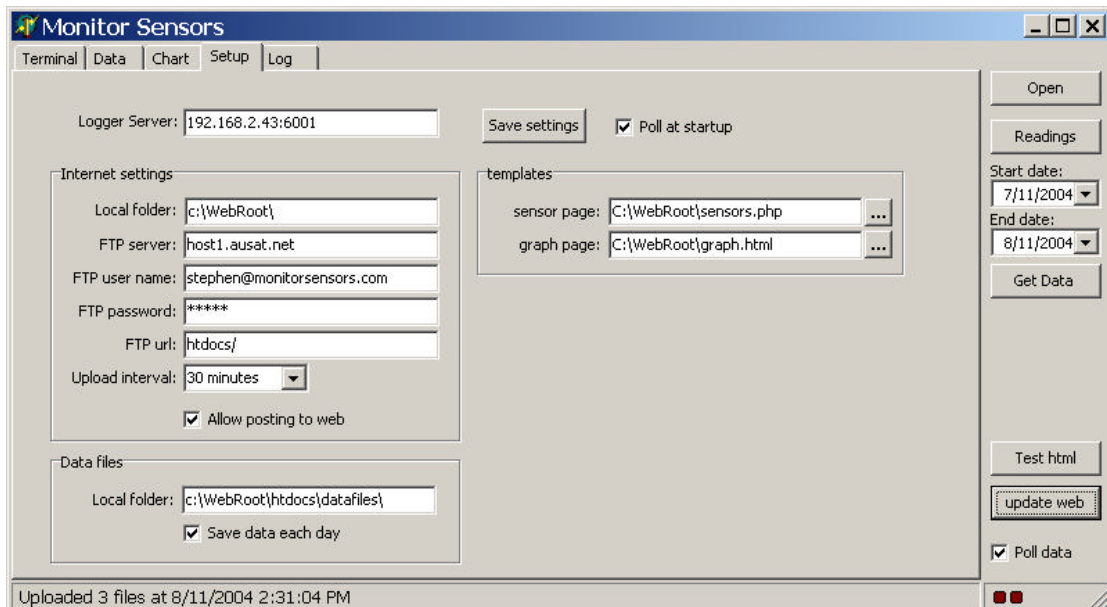


date	time	TA101392	BP100156	RG200065	SR200400	AN240309	WD200223	HL100479	ET000000	SI100000	BV400000	DP100000
dd/mm/yy	hh:mm:ss	1 °C	3 kPa	4 mm	5 W/m²	8 km/h	7 °	8 %	:mm/day	:stress	± Volts	- 1
07/11/04	00:00:00	23.184	1013.64		0.0	7.92	294.92	90.77	0.71	72.92	6.79	21.59
07/11/04	01:00:00	23.130	1012.93		0.0	8.31	97.74	98.97	0.88	72.67	6.79	21.21
07/11/04	02:00:00	22.814	1012.49		0.0	7.05	21.70	90.92	0.63	72.30	6.79	21.26
07/11/04	03:00:00	22.950	1012.45	0.2	0.0	2.89	267.03	91.65	0.32	71.91	6.80	21.14
07/11/04	04:00:00	22.542	1012.60		0.0	3.49	310.12	91.88	0.25	71.91	6.80	21.17
07/11/04	05:00:00	22.384	1013.27		0.0	2.24	50.60	93.03	0.23	71.74	6.80	21.21
07/11/04	06:00:00	22.596	1013.86		43.6	3.20	109.87	92.35	0.48	72.04	6.80	21.30
07/11/04	07:00:00	23.674	1014.61		180.4	3.37	0.40	87.74	3.53	73.48	6.80	21.51
07/11/04	08:00:00	24.122	1015.17		307.2	6.63	244.66	84.85	6.70	73.94	6.80	21.42
07/11/04	09:00:00	25.028	1015.17		384.0	7.29	15.22	78.66	8.97	74.78	6.79	21.07
07/11/04	10:00:00	22.018	1014.35	6.0	194.0	10.94	204.50	92.87	3.85	71.09	6.79	20.82
07/11/04	11:00:00	22.674	1014.01	3.4	263.3	10.05	357.56	92.03	5.34	72.15	6.79	21.32
07/11/04	12:00:00	22.090	1013.63	0.6	79.2	7.85	26.35	92.56	1.40	71.18	6.79	20.85

Version: 1.0.21.5

Web Graph Server Installation

- ?? Your internet gateway must allow **ftp** from the computer running the **web server** program.
- ?? You need the IP address of the logger serial device server. The serial device TCP port default is 6001.
- ?? If you want to directly access the logger over the internet, and you have a firewall at your LAN – internet gateway, you may need to alter your firewall configuration to allow access from the internet to the serial device server.
- ?? The clients web browser will automatically download the graph object, if the clients internet security settings allow active content. Clients may need to alter their internet security settings for your web site, to successfully use the WebGraph OCX.



Installation File details

Name	Description	Install location
Sensor template.txt	A template used to create the sensors.html web page	The local folder defined in the web01.exe setup page
Graph template.txt	A template used to create the graph.html web page	The local folder defined in the web01.exe setup page
Web01.exe	The web page producer and interface to the logger ethernet serial device server	A folder on a computer connected to your LAN and to the internet.
WebGraph.cab	The graph OCX.	Your website document folder

Web server setup

Local folder	the location of the template files – the web pages are created here then sent to the website.
FTP server	The internet address of your webpage server
FTP user name	the login username for your website folders
FTP password	the login password for your website folders
FTP url	the folder path for your web pages – the file are sent here
Upload interval	the pages will be created and sent to your website at the defined interval
Allow posting	the ftp process can be disabled by clearing this checkbox
Start/end date	the graph data download defaults to a 2 day period. This can be changed as required. Large date ranges will increase the duration of the logger data download, and web page download.

Running the program

1. Run the program.
2. Set the variables on the **setup** page.
3. Set the serial device server IP address and port number e.g. 192.168.2.43:6001.
4. Activate the **terminal** page.
5. Press the **open** button and wait for a response.
6. Press the **readings** button and wait for a response, then check the **Data** page to see that the readings are displayed correctly.
7. Set the **poll data** checkbox to begin automatic download and web page creation.

Sensor Table Template (**sensor template.txt**)

This file is used to create the web page **sensors.html**. The web page creator **Web01.exe** changes the two fields detailed below. The user can change the rest of the page. The column widths, table colours and fonts can be changed, but not the column order.

```
<HTML><HEAD><TITLE>Monitor Sensors WebServer Demo</TITLE>
<STYLE type="text/css">
<!--
BODY {
    FONT-SIZE: 11px; COLOR: #000000; FONT-FAMILY: geneva,
verdana; BACKGROUND-COLOR: #FFFFFF
}

H1 {
    FONT-SIZE: 16px
}

A:hover {
    COLOR: #ff9900; TEXT-DECORATION: underline
}
-->
</STYLE>
</HEAD>
<BODY><H1 align=center>Monitor Sensors WebServer Demo :
%%TIME</H1>
<table width="500" border="1" align="center" bordercolor="#FFFFFF"
bgcolor="#99CCFF" id="tblOne"> <tr>
    <th width="30" scope="col">no:</th>
    <th width="30" scope="col">id:</th>
    <th width="30" scope="col">@</th>
    <th width="80" scope="col">serial no:</th>
    <th width="200" scope="col">type:</th>
    <th width="80" scope="col">reading:</th>
    <th width="40" scope="col">units:</th>
</tr>
    %%TABLE
</table>
<!-- #echo var="LAST_MODIFIED" -->
</BODY></HTML>
```

The time that the web page is created.

The text %%TABLE is replaced by table rows created by the web page producer.

Graph Template (graph template.txt)

This file is used to create the web page *graph.html*. The web page creator **Web01.exe** changes the two fields detailed below. The marked OBJECT tag and the PARAM definitions must be included in the web page text. The user can change the rest of the page.

```
<HTML><HEAD><TITLE>Monitor Sensors WebServer Demo</TITLE>
<STYLE type="text/css">
<!--
BODY {
    FONT-SIZE: 11px; COLOR: #000000; FONT-FAMILY: geneva,
verdana; BACKGROUND-COLOR: #FFFFFF
}

H1 {
    FONT-SIZE: 16px
}

A:hover {
    COLOR: #ff9900; TEXT-DECORATION: underline
}
-->
</STYLE>
</HEAD>
<BODY><H1 align=center>Monitor Sensors Web Graph Demo</H1>
<HR><center><P>
```

```
<OBJECT
    classid="clsid:2CDFFD84-EB69-11D8-BCA1-00E07D70F365"
    codebase="WebGraph.cab#version=1,0,14,5"
    width=753
    height=395
    align=center
    hspace=0
    vspace=0
```

Title displayed in the graph OCX. **The double quotes are a required part of this field.**

```
>
<PARAM NAME=Caption VALUE="Monitor Sensors Graph">
<PARAM NAME=Data VALUE="%%FILE">
</OBJECT>
```

The %%FILE is replaced with the logger data by the Web graph server program **Web01.exe**. **The double quotes are a required part of this field.**

```
<!-- #echo var="LAST_MODIFIED" -->
</BODY></HTML>
```