

APPLICATION SHEET

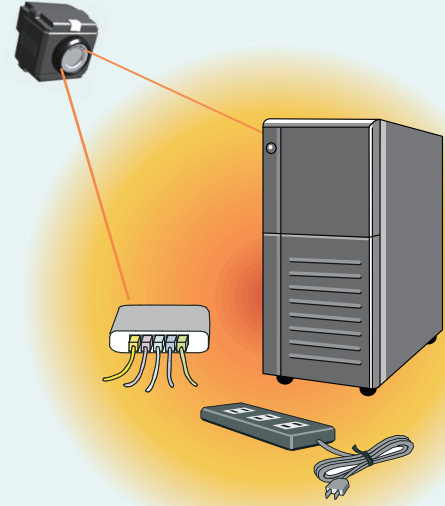
Application of TP-L0260EN for monitoring server room temp.

TP-L helps:

Detect abnormal exothermic heat of server at the early stage. Protect important data.

Server is heat-sensitive. Therefore, especially under operating multiple server units at the server room, temperature monitoring is very important.

Even though there are many occasions using air conditioner to keep steady temperature, it is very important to monitor exothermic heat of server at the early stage.



Recommended circumstance for server room

Recommended temp **19 to 25**

Recommended humidity **20% to 80%**

Features

Test Date : Jan. 20, 2009
Place : Server room

Not only does monitoring exothermic heat of server is necessary but monitoring exothermic heat of power supply and hub at regular basis check is also necessary.



Server room



Hub Rack

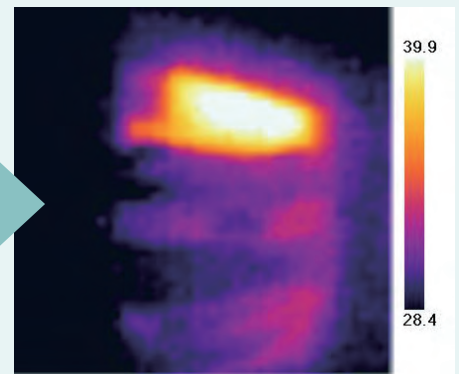


Image picture

Detecting degradation or exothermic heat at the early stage makes it possible to do maintenance instruments or relocate server racks with prompt action.