

PicoScope 9200A

PC Sampling Oscilloscopes for Windows PCs

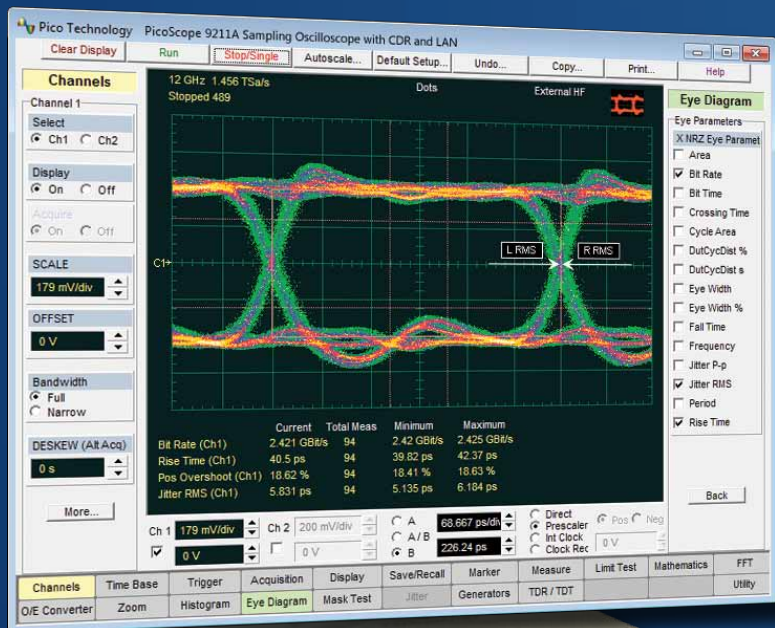
Signal
characterization

Pre-compliance
testing

Electrical
TDR and TDT

Production
pass/fail testing

Complete sampling oscilloscopes for your PC

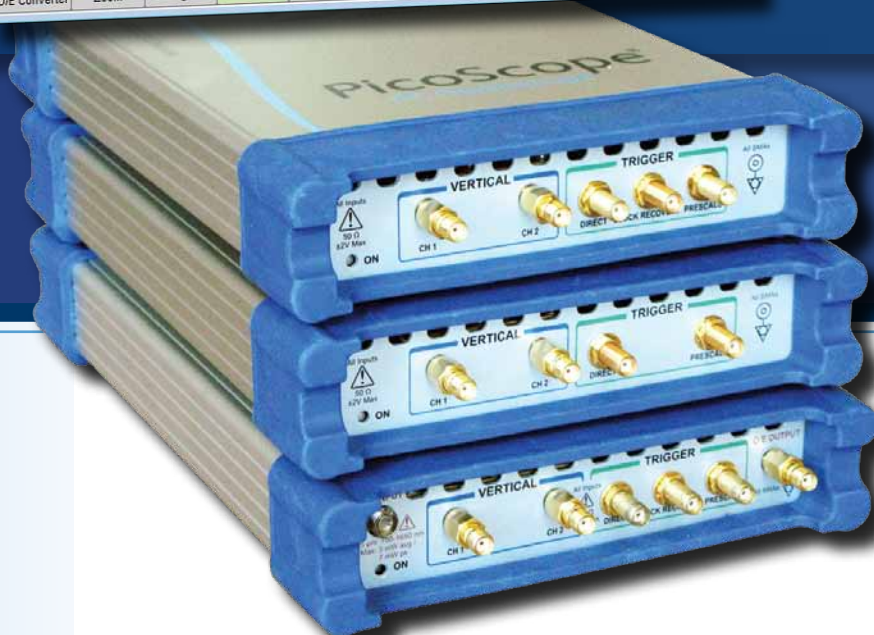


12 GHz bandwidth on 2 channels
 Dual timebase from 10 ps/div
 Up to 10 GHz trigger bandwidth
 Optical and electrical inputs
 ActiveX component included

High-resolution cursor measurement
 Automatic waveform measurements with statistics
 Waveform processing including FFT
 Time and voltage histograms
 Eye-diagram measurements for NRZ and RZ
 Automated mask tests
 Intuitive Windows user interface

Applications

Standards pre-compliance testing
 IC package characterization
 Telecom service and manufacturing
 Timing analysis
 Digital system design and characterization
 Mask drawing and display
 Automatic pass/fail mask limit testing
 High-speed serial bus pulse response

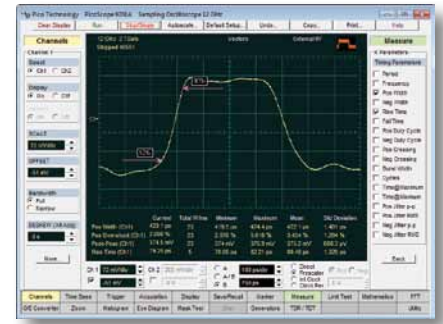


- Standard Masks
- SONET/SDH
- OC1/STM0
- OC3/STM1
- OC9/STM3
- OC12/STM4
- OC18/STM6
- OC48/STM16
- FEC2666
- Fibre Channel
- FC133
- FC266
- FC531
- FC1063
- FC2125
- FC4250
- Ethernet
- 1.25 Gb/s
- GB
- 2XGB
- 3.125 Gb/s
- INFINIBAND
- 2.5G
- 5.0 G
- XAU1
- 3.125 Gb/s
- ITU G.703
- DS1
- 2 Mb
- DS2
- 8 Mb
- 34 Mb
- DS3
- 140 Mb
- 155 Mb
- ANSI T1/102
- DS1
- DS1C
- DS2
- DS3
- STS1 Eye
- STS1 Pulse
- STS3
- Rapid IO
- 1.25 Gb/s
- 2.5 Gb/s
- 3.125 Gb/s
- G.984.2
- 3.125 Gb/s
- PCI Express
- 2.5G
- 5.0G
- Serial ATA
- 1.5G
- 3.0G

12 GHz bandwidth

The PicoScope 9200A oscilloscopes uses sequential sampling technology to measure fast repetitive signals without the need for expensive real-time sampling hardware. Combined with an input bandwidth of 12 GHz, this enables acquisition of signals with rise times of 50 ps or even faster. Precise timebase stability and accuracy, and a resolution of 200 fs, allow characterization of jitter in the most demanding applications.

The scopes are designed with Pico Technology's PC Oscilloscope architecture to create a compact, lightweight instrument that can be easily carried around with your laptop.



10 GHz prescaled trigger

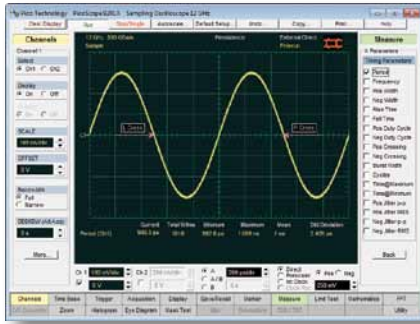
The PicoScope 9200A scopes have a built-in high-frequency trigger with frequency divider. Its typical bandwidth of up to 10 GHz allows measurements of microwave components with extremely fast data rates.

1 GHz full-function direct trigger

The scopes are equipped with a built-in direct trigger for signals up to 1 GHz repetition rate without using additional trigger units.

Built-in 2.7 Gb/s clock recovery

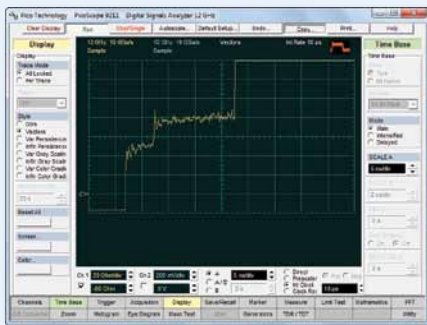
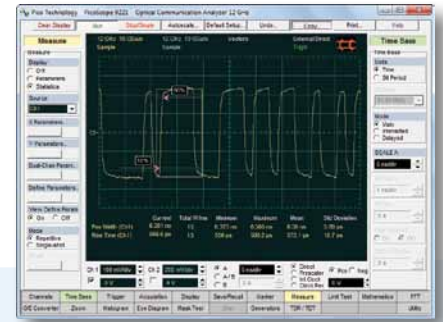
The PicoScope 9211A, 9221A, and 9231A have a dedicated clock-recovery trigger input for serial data from 12.3 Mb/s to 2.7 Gb/s.



Pulse parameter measurements

Maximum, Minimum, Peak-Peak, Top, Base, Amplitude, Middle, Mean, DC RMS, AC RMS, Area, Cycle Middle, Cycle Mean, Cycle DC RMS, Cycle AC RMS, Cycle Area, Positive/Negative Overshoot, Period, Frequency, Positive/Negative Width, Rise/Fall Time, Positive/Negative Duty Cycle, Positive/Negative Crossing, Burst Width, Cycles, Time at Maximum/Minimum, Delay, Gain, FFT Magnitude, FFT Delta Magnitude, THD, FFT Frequency, FFT Delta Frequency

The PicoScope 9200A scopes quickly measure over 40 pulse parameters, so you don't need to count graticules or estimate the waveform's position. Up to ten simultaneous measurements or four statistics measurements are possible. The measurements conform to the IEEE standards.



Measured parameters

Propagation delay
Gain
Gain dB

Horizontal units

Time
Meter
Foot
Inch

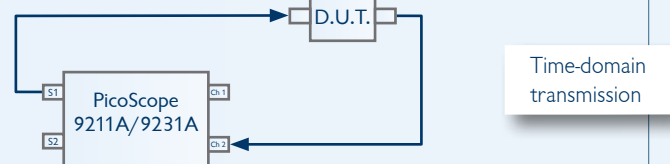
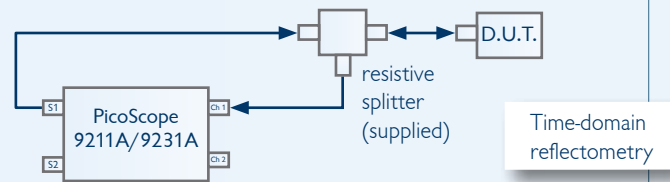
Step generators

Dual outputs
Adjustable de-skew
Programmable polarity
100 ps (typical) rise/fall times, 20% to 80% Step, coarse timebase and pulse modes
NRZ and RZ patterns with variable length

TDR/TDT analysis

The PicoScope 9211A and 9231A are supplied with a calibrated time-domain reflectometry (TDR) and time-domain transmission (TDT) accessory kit. This is used with the unit's built-in step generators to measure impedance discontinuities in circuit boards, cables and transmission lines, connectors and IC packages, with a horizontal resolution of 200 fs. The results can be displayed as volts, ohms or reflection coefficient (ρ) against time or distance.

The TDR/TDT scopes also include all the features of the PicoScope 9201A, such as eye diagram analysis and mask testing.



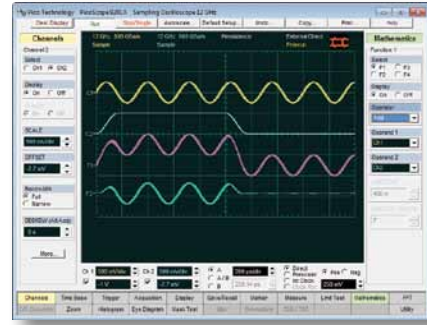
Powerful mathematical analysis

Mathematical functions

$A + B$ $-A$
 $A - B$ $|A|$
 $A \times B$ $\log(A)$
 $A \div B$ dA/dt
 $\int A.dt$
 $\text{interpolate}(A)$
 $\text{smooth}(A)$

The PicoScope 9200A scopes support up to four simultaneous mathematical combinations and functional transformations of acquired waveforms.

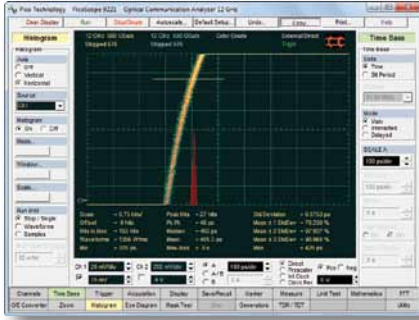
You can select any of the mathematical functions to operate on either one or two sources. All functions can operate on live waveforms, waveform memories or even other functions.



Histogram analysis

A histogram is a probability graph that shows the distribution of acquired data from a source within a user-definable window. The information gathered by the histogram is used to perform statistical analysis on the source.

Histograms can be constructed on waveforms on either the vertical or horizontal axes. The most common use for a vertical histogram is measuring and characterising noise, while the most common use for a horizontal histogram is measuring and characterizing jitter.

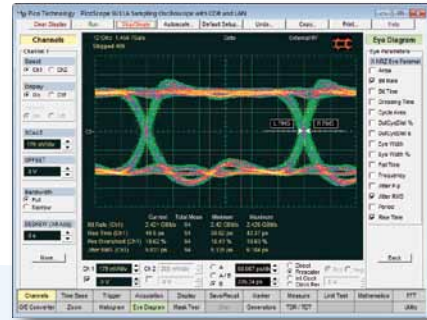


Eye-diagram analysis

The PicoScope 9200A scopes quickly measure more than 30 fundamental parameters used to characterize non-return-to-zero (NRZ) signals and return-to-zero (RZ) signals. Up to four parameters can be measured simultaneously, with statistics also shown.

The measurement points and levels used to generate each parameter can be shown dynamically.

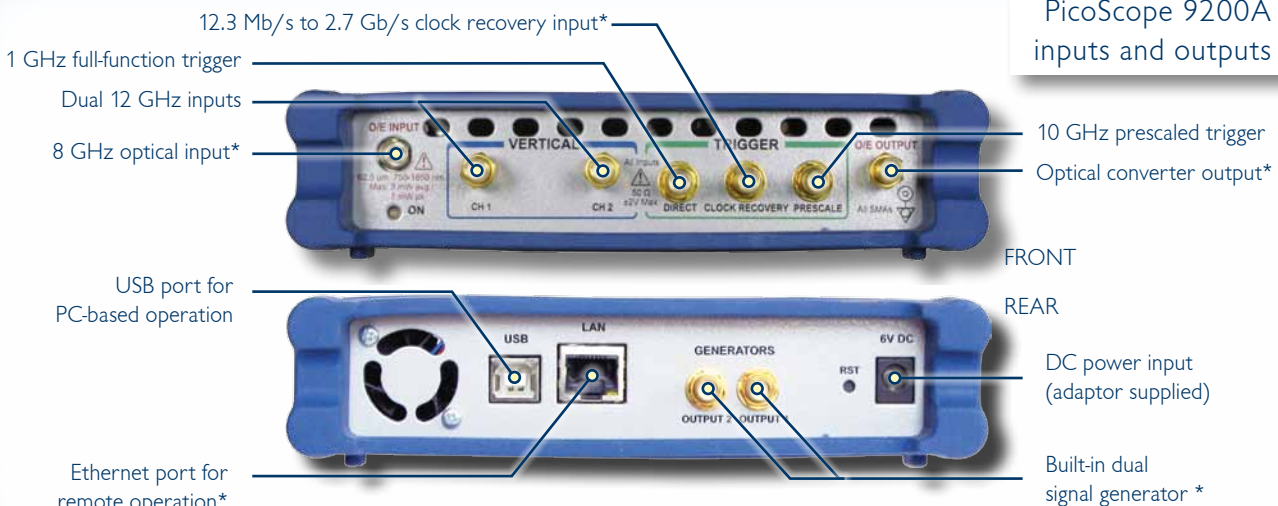
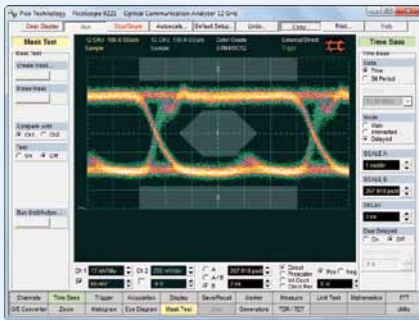
Eye diagram analysis can be made even more powerful with the addition of mask testing, as described below.



Mask testing

For eye-diagram masks, such as those specified by the SONET and SDH standards, the PicoScope 9200A scopes support on-board mask drawing for visual comparison. There is a library of built-in masks (listed in the column on the left), and custom masks can be automatically generated and modified using the graphical editor. A specified margin can be added to any mask.

The display can be grey-scaled or colour-graded to aid in analyzing noise and jitter in eye diagrams. There is also a statistical display showing the number of failures in both the original mask and the margin.



*Not on all models. See feature chart on back page.

Optical-to-electrical converter

The PicoScope 9221A and 9231A have a built-in 8 GHz optical electrical converter. This allows analysis of optical signals such as SONET/SDH OC1 to OC48, Fibre Channel FC133 to FC4250, and G.984.2. The converter input accepts both single-mode (SM) and multimode (MM) fibers and has a wavelength range of 750 to 1650 nm.

A selection of Bessel-Thomson filters can be purchased separately for use with specific optical standards (see back page).

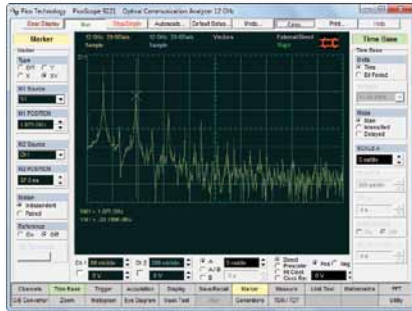


FFT analysis

All PicoScope 9000 Series oscilloscopes can perform up to 2 Fast Fourier Transforms of input signals using a range of windowing functions. FFTs are useful for finding crosstalk problems, finding distortion problems in analog waveforms caused by non-linear amplifiers, adjusting filter circuits designed to filter out certain harmonics in a waveform, testing impulse responses of systems, and identifying and locating noise and interference sources.

Windowing functions

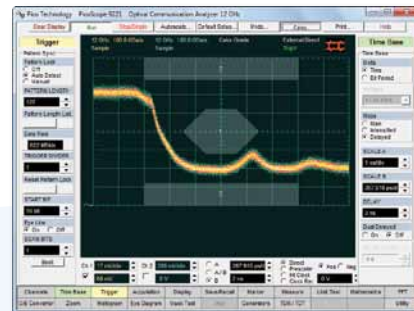
- Rectangular
- Hamming
- Hann
- Flat-top
- Blackman- Harris
- Kaiser-Bessel



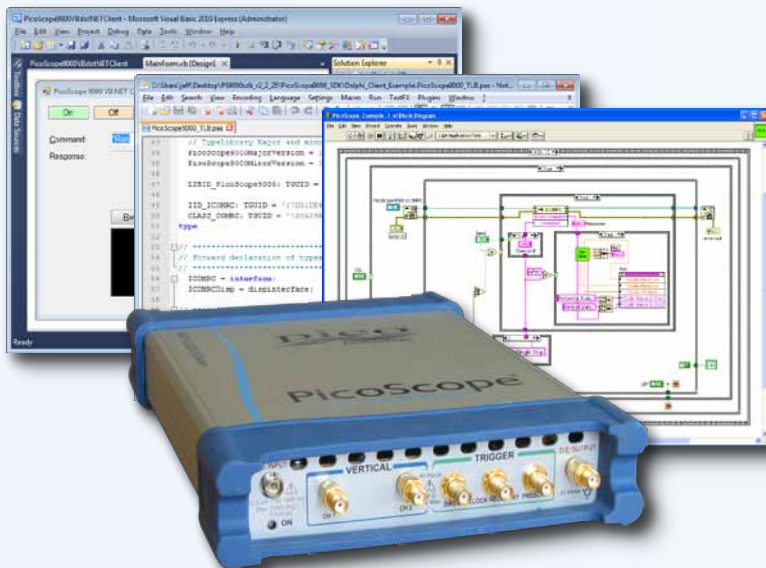
Pattern sync trigger and eye line mode

The PicoScope 9211A, 9221A and 9231A can internally generate a pattern sync trigger derived from bit rate, pattern length, and trigger divide ratio. This enables it to build up an eye pattern from any specified bit or group of bits in a sequence.

Eye line mode works with the pattern sync trigger to isolate any one of the 8 possible paths, called eye lines, that the signal can make through the eye diagram. This allows the instrument to display averaged eye diagrams showing a specified eye line.



Software Development Kit



The PicoScope 9000 software can be operated as a standalone oscilloscope program and as an ActiveX control. The ActiveX control conforms to the Windows COM model and can be embedded in your own software. Programming examples are provided in Visual Basic (VB.NET), LabVIEW and Delphi, but any programming language or standard that supports the COM standard can be used, including JavaScript and C.

A comprehensive Programmer's Guide is supplied that details every function of the ActiveX control.

The SDK can control the oscilloscope over the USB or the LAN port.

ActiveX command categories

- Header
- System
- Channels
- Timebase
- Trigger
- Acquisition
- Display
- Save/Recall
- Markers

Measurements (Time Domain)

- Measurements (Spectrum)
- Limit Tests
- Mathematics
- FFT
- Histogram
- Mask Testing
- Eye Diagrams
- Utilities
- Waveforms

ActiveX command types

- Execution
- On/off
- On/off group
- Selector
- Integer
- Float
- Data

Channels (vertical)

Number of channels	2 (simultaneous acquisition)
Bandwidth	Full: DC to 12 GHz Narrow: DC to 8 GHz
Pulse response rise time	10% to 90%, calculated from $T_r = 0.35/BW$ Full bandwidth: 29.2 ps Narrow bandwidth: 43.7 ps
RMS noise, maximum	Full bandwidth: 2 mV Narrow bandwidth: 1.5 mV With averaging: 100 μ V system limit
Scale factors (sensitivity)	2 mV/div to 500 mV/div. 1-2-5 sequence and 0.5% fine increments.
Nominal input impedance	(50 \pm 1) Ω
Input connectors	SMA (F)

Timebases

Timebases	10 ps/div to 50 ms/div (main, intensified, delayed, or dual delayed)
Delta time interval accuracy	$\pm 0.2\%$ of delta time interval ± 15 ps
Time interval resolution	200 fs minimum

Trigger

Trigger sources	External direct trigger, external prescaled trigger, internal clock trigger, clock recovery trigger (not 9201A)
Direct trigger bandwidth and sensitivity	DC to 100 MHz: 100 mV p-p 100 MHz to 1 GHz: increasing linearly from 100 mV p-p to 200 mV p-p
Prescaled trigger bandwidth and sensitivity	1 to 7 GHz: 200 mV p-p to 2 V p-p 7 to 8 GHz: 300 mV p-p to 1 V p-p 8 to 10 GHz typical: 400 mV p-p to 1 V p-p
Trigger RMS jitter, maximum	4 ps + 20 ppm of delay setting

Acquisition

ADC resolution	16 bits
Digitizing rate	DC to 200 kHz maximum
Acquisition modes	Sample (normal), average, envelope
Data record length	32 to 4096 points maximum per channel in x2 sequence

Display

Display resolution	Variable
Display style	Dots, vectors, variable or infinite persistence, variable or infinite grey scaling, variable or infinite color grading

Measurements and analysis

Marker	Vertical bars, horizontal bars (measure volts) or waveform markers (x and +)
Automatic measurements	Up to 40 automatic pulse measurements
Histogram	Vertical or horizontal
Mathematics	Up to four math waveforms can be defined and displayed
FFT	Up to two FFTs simultaneously, with built-in filters (rectangular, Nicolson, Hann, flat-top, Blackman-Harris and Kaiser-Bessel)
Eye diagram	Automatically characterizes NRZ and RZ eye patterns. Measurements are based on statistical analysis of the waveform.
Mask test	Acquired signals are tested for fit outside areas defined by up to eight polygons. Standard or user-defined masks can be selected.

Clock recovery and pattern sync trigger (not 9201A)

Clock recovery sensitivity	12.3 Mb/s to 1 Gb/s: 50 mV p-p 1 Gb/s to 2.7 Gb/s: 100 mV p-p Continuous rate.
Pattern sync trigger	10 Mb/s to 8 Gb/s with pattern length from 7 to 65,535 max.
Recovered clock RMS trigger jitter, maximum	1 ps + 1.0% of unit interval
Maximum safe trigger input voltage	± 2 V (DC + peak AC)
Trigger input connector	SMA (F)

Signal generator output (9211A and 9231A)

Rise/fall times	100 ps (20% to 80%) typical
Modes	Step, coarse timebase, pulse, NRZ, RZ

Optical-electrical (O/E) converter (9221A and 9231A only)

Unfiltered bandwidth	DC to 8 GHz typical. DC to 7 GHz guaranteed at full electrical bandwidth.
Effective wavelength range	750 nm to 1650 nm
Calibrated wavelengths	850 nm (MM), 1310 nm (MM/SM), 1550 nm (SM)
Transition time	10% to 90% calculated from $T_r = 0.48 / BW$: 60 ps max.
RMS noise, maximum	4 μ W (1310 & 1550 nm), 6 μ W (850 nm)
Scale factors (sensitivity)	1 μ V/div to 400 μ V/div (full scale is 8 divisions)
DC accuracy, typical	± 25 μ W $\pm 10\%$ of vertical scale
Maximum input peak power	+7 dBm (1310 nm)
Fiber input	Single-mode (SM) or multi-mode (MM)
Fiber input connector	FC/PC
Input return loss	SM: -24 dB, typical MM: -16 dB, typical, -14 dB, maximum

General

Operating temperature range	+5 $^{\circ}$ C to +35 $^{\circ}$ C (+15 $^{\circ}$ C to +25 $^{\circ}$ C for stated accuracy)
Power	+6 V DC \pm 5% PicoScope 9201A: 1.9 A max. PicoScope 9211A: 2.6 A max. PicoScope 9221A: 2.3 A max. PicoScope 9231A: 2.9 A max. Mains adaptor supplied for UK/US/EU/AUS/NZ.
PC connection	USB 2.0 (compatible with USB 1.1)
LAN connection	10/100 Mbit/s (9211A and 9231A only)
PC requirements	Windows XP (SP2), Vista or Windows 7, 32-bit or 64-bit
Dimensions	W 170 mm x D 260 mm x H 40 mm
Weight	1.1 kg

Kit contents

- PicoScope 9200 PC Sampling Oscilloscope
- PicoScope 9000 Series Software CD
- Two SMA connector savers (supplied fitted to scope)
- Additional connector saver (9221A and 9231A only)
- Universal power supply with UK, US, EU and AUS/NZ plugs
- LAN patch cable (LAN models only)
- LAN crossover cable (LAN models only)
- TDR accessory kit (TDR models only)
- Installation guide
- USB cable
- Carry case



TDR/TDT Accessory Kit - included with PicoScope 9211A and 9231A



- 30 cm precision cable
- 80 cm precision cable
- 0 Ω short
- 50 Ω terminator
- Coupler
- Resistive power divider
- SMA wrench

PicoScope 9200A models compared

	9201A	9211A	9221A	9231A
12 GHz sampling oscilloscope	•	•	•	•
USB port	•	•	•	•
LAN port		•	•	•
Clock recovery trigger		•	•	•
Pattern sync trigger		•	•	•
Dual signal generator outputs		•	•	•
Electrical TDR/TDT capability		•	•	•
8 GHz optical-electrical converter			•	•

Bessel-Thomson reference receiver filters

- For use with the optical-to-electrical converter on the PicoScope 9221A and 9231A
- Reduces peaking and ringing
- Choice of filter depends on the bit rate of the signal under analysis

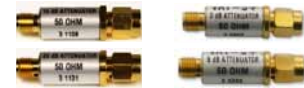


Order Code	Bit Rates
TA120	51.8 Mb/s (OC1/STM0)
TA121	155 Mb/s (OC3/STM1)
TA122	622 Mb/s (OC12/STM4)
TA123	1.250 Gb/s (GBE)
TA124	2.488 Gb/s (OC48/STM16) / 2.500 Gb/s (Infiniband 2.5G)

Attenuators

The following attenuators are available for use with all models in the 9200A series:

Order Code	Description
TA077	Attenuator 3 dB, 50 ohm SMA to SMA
TA078	Attenuator 6 dB, 50 ohm SMA to SMA
TA140	Attenuator 10 dB, 50 ohm SMA to SMA
TA141	Attenuator 20 dB, 50 ohm SMA to SMA



Ordering information

PP463 PicoScope 9201A 12 GHz Sampling Oscilloscope
PP473 PicoScope 9211A 12 GHz Sampling Oscilloscope with CDR, LAN, TDR/TDT Accessory Kit
PP654 PicoScope 9221A 12 GHz Sampling Oscilloscope with 8 GHz Optical Input, CDR
PP664 PicoScope 9231A 12 GHz Sampling Oscilloscope with 8 GHz Optical Input, CDR, LAN, TDR/TDT Accessory Kit

Dollar and euro prices are subject to exchange rate fluctuations. Please contact Pico Technology for the latest prices before ordering. Errors & omissions excepted.

www.picotech.com



www.esis.com.au
 Ph 02 9481 7420
 Fax 02 9481 7267
esis.enq@esis.com.au

Pico Technology, James House, Colmworth Business Park, ST. NEOTS, Cambridgeshire, PE19 8YP, UK
 T: +44(0) 1480 396 395 F: +44 (0) 1480 396 296 E: sales@picotech.com www.picotech.com

Copyright © 2008-2011 Pico Technology Ltd. All rights reserved.

MM013.en-7

pico
Technology