

### APPLICATION SHEET

## Detecting abnormal exothermic heat of electronic component.

### TP-L helps:

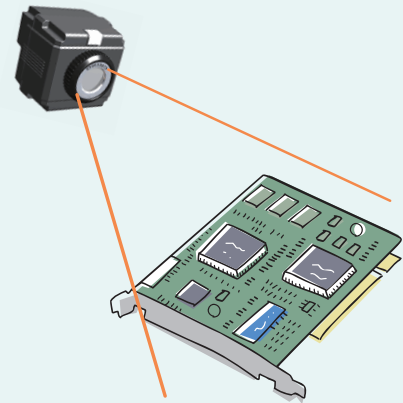
Do you have any concern regarding defective board and circuit ?

TP-L can assist you to investigate the cause of abnormal exothermic heating area.

As the investigating method of poor performance circuit, detecting abnormal exothermic heating area is the fast way of solving issue.

Affordable thermal imaging sensor makes it possible to consider the installation.

Using TP-L to obtain temperature distribution on the board and monitoring abnormal heating area will be able to reduce hours of initial analysis.



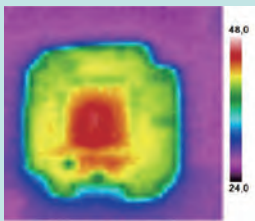
### Features

Obtain temperature distribution on the board.

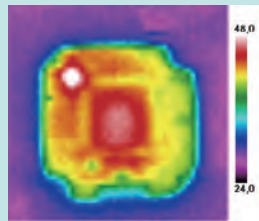
Abnormal exothermic heating area can be screened by visual or automatic (Connecting to PLC) Image(JPG)and temp data(CSV)will be stored consecutively into the PC.

To create inspection standard file and to monitor changes in exothermic heat state would be effective.

#### Image Screening



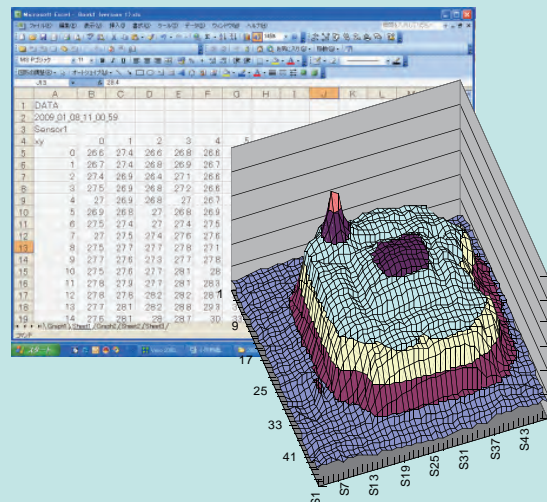
Normal condition



Defect condition



#### Analyzing Data



	A	B	C	D	E	F	G	H	I	J
1	DATA									
2	2009.01.08.11.00.59									
3	Sensor1									
4	key	0	1	2	3	4				
5	1	266	274	266	268	268				
6	1	267	274	268	269	267				
7	2	274	269	264	271	268				
8	3	275	269	268	272	268				
9	4	27	269	268	27	267				
10	5	269	268	27	268	269				
11	6	275	274	27	274	275				
12	7	27	275	274	276	276				
13	8	275	277	277	278	271				
14	9	277	276	278	277	278				
15	10	275	276	277	281	28				
16	11	276	278	277	281	283				
17	12	276	276	282	282	281				
18	13	277	281	282	288	293				
19	14	275	281	28	287	30				

