



# Log, Save, Print and Analyse Data On-Site Quickly and Efficiently

## The new testo 175 / 177 data loggers



On-site: Detailed information in display

°C  
%RH  
td  
mA/V



On-site: Non-contact and fast data collection (400 data/second)



On-site: Fast printing at 6 lines/second



On-site: Reset and restart



[www.esis.com.au](http://www.esis.com.au)

Ph 02 9481 7420  
Fax 02 9481 7267  
[esis.enq@esis.com.au](mailto:esis.enq@esis.com.au)

## Time saving, highly flexible data handling on-site

### The new testo 175 data logger series and the testo 177 data logger series

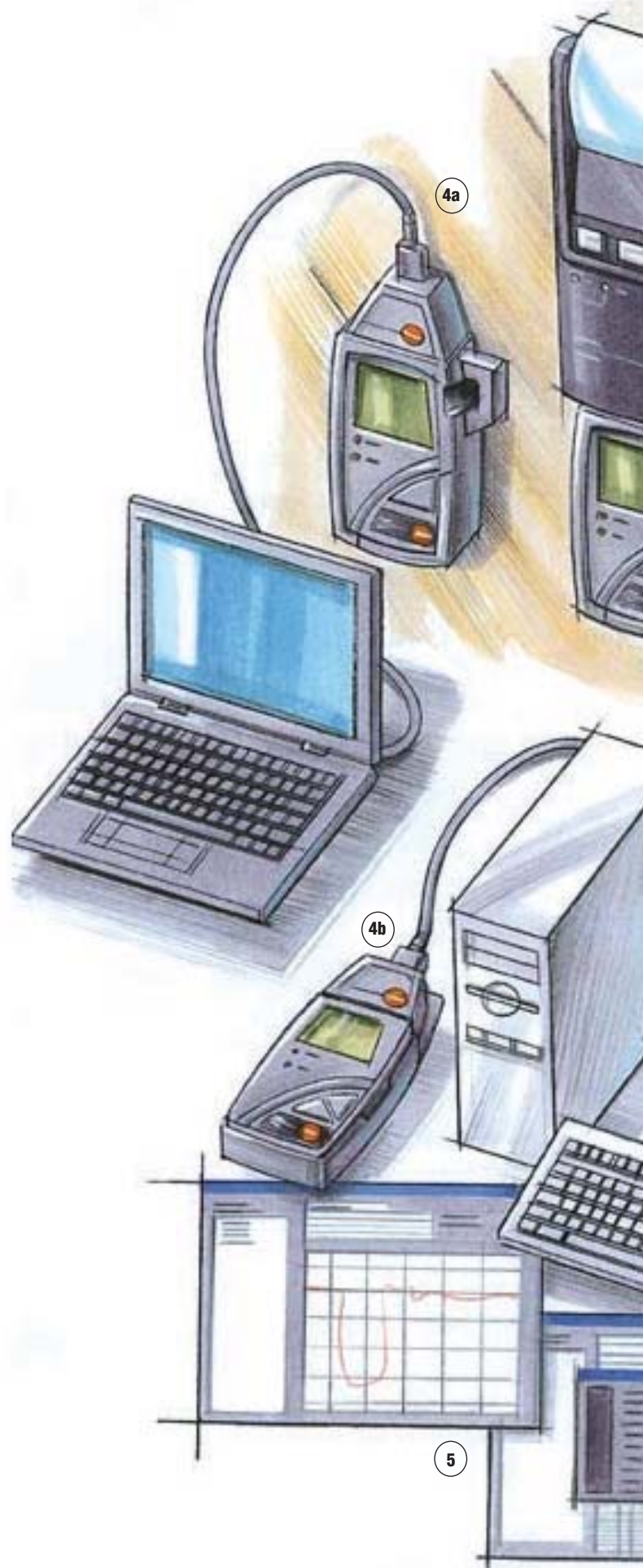
The testo 175 series consists of 6 compact data loggers, small in size, which measure temperature, humidity, voltage and current. The testo 177 series consists of 5 instruments suitable for a wide range of applications, ideal for long-term applications. All the loggers which have a display can immediately provide a quick overview of the current reading, the last value saved, maximum and minimum value and the number of times the limit has been exceeded. The testo 580 data collector, suitable for all the data loggers, and the flexible testo 575 fast printer opens up a whole new range of possibilities for dealing with measurement data.

#### testo 580 - the on-site data collector

The testo 580 data collector uniquely allows stored data to be transferred from the logger on-site without interrupting measurement. It can also stop and reprogram several loggers on-site. The complete memory of the testo 177 data logger or 175 data logger is transferred in seconds, approx. 400 values per second are transmitted via the infrared interface. All values collected by the data collector can then be downloaded to PC and analysed using the Windows compatible Testo ComSoft 3 software.

#### testo 575 - the fast on-site printer

The testo 575 printer can print up to six lines per second to paper in table or graph form. The stored data is transferred on-site by infrared without interrupting measurement and enables fast and convenient documentation on-site without the need for a PC. Thanks to this new Testo concept it is possible to program the logger without a PC or notebook.



- 1 **testo 175 or testo 177**  
With wall holder and lock
- 2 **testo 580**
  - a. The logger data can now be transferred on-site
  - b. The collected data can be downloaded to PC
- 3 **testo 575**  
The practical printer enables you to print the logger data on location
- 4 **Interface**
  - a. If required a notebook can still be used on-site
  - b. Used to download data to a PC
- 5 **Windows® compatible software**  
With e-mail function





## Super Secure

### Non-volatile memory for secure data

The new testo 175 and testo 177 data logger series provide you with security in the knowledge that vital data will not be lost if the battery is spent or changed. As the battery can be changed by the user it is possible to have interrupted data logging and documentation over a period of several years by calculating the battery life of the logger using ComSoft 3 software. This is a real advantage for efficient and controlled measurement.

### Hugely reliable

All of the data loggers have a real-time clock (RTC) with an accuracy of  $\pm 2$  min per month. The robust ABS casing with non-skid/non-rigid surface guarantees protection from humidity and mechanical strain. Some of the loggers have a protection class of IP 68. The loggers are also tamperproof with options for a padlock.

### ISO/DKD calibration services

In many industries, such as pharmaceutical manufacturing, the use of measuring instruments without the correct calibration is practically unimaginable. Testo makes it possible to calibrate all logger types to the highest possible standards. Testo is unique worldwide with its combination of DKD calibration laboratories, accredited to ISO 17025, for temperature, relative humidity, velocity and pressure. ISO calibrations, which are a cheaper alternative to DKD calibrations, are accepted by many audits in accordance with ISO 9001, HACCP, GMP, FDA, VDA 6.1, ISO TS 16949 etc. See summary of certificates on page 14.

### Windows® compatible software

Testo software - ComSoft 3 Basic and ComSoft 3 Professional has all the functions needed to save your logger data quickly and reliably. The logger can be programmed to start via key, according to date and time or via PC. The logger can be stopped once a certain number of measurements have been reached, according to date or time or simply when the memory is full, manually via PC or via the testo 575 printer or testo 580 data collector. The wraparound memory program enables "continuous measurements" i.e. the oldest value is written over.

## testo 175

### Compact data loggers for temperature, humidity, voltage and current

- Memory for up to 16,000 readings
- Maximum 2 channels
- Measuring rate: 10 s to 24 h
- Battery life: > 2.5 years \*
- LCD display versions, 1 line
- Dimensions: 82 x 52 x 30 mm
- All loggers can be calibrated (ISO and DKD)

**1 channel temperature logger  
with internal sensor  
testo 175-T1**

°C



IP 68



Meas. range -35 to +70 °C  
Memory 7,800 readings

See page 6

**2 channel temperature logger  
with internal sensor/external probe socket  
testo 175-T2**

°C



IP 68



Meas. range -35 to +70 °C (internal)  
-40 to +120 °C (external)  
Memory 16,000 readings

See page 6

**2 channel temperature logger  
for external thermocouples  
testo 175-T3**

°C



IP 54

Meas. range -50 to +1000 °C (Type K)  
-50 to +400 °C (Type T)  
Memory 16,000 readings

See page 7

**2 channel humidity/temperature data logger  
with internal sensors  
testo 175-H1**

°C

%RH



Meas. range 0 to 100 %RH  
-10 to +50 °C  
Memory 3,700 readings

See page 8

**2 channel humidity/temperature logger  
with internal sensors  
testo 175-H2**

°C

%RH



Meas. range 0 to 100 %RH  
-20 to +70 °C  
Memory 16,000 readings

See page 8

**1 channel current/voltage logger  
testo 175-S1**

mA/V



Meas. range 0 to 1 V / 0 to 10 V  
0 to 20 mA / 4 to 20 mA  
Memory 16,000 readings  
Meas. rate 1 s to 24 h

See page 7

\* at a measuring rate of 15 min (-10 to +50 °C)

## testo 177

### Professional data loggers for long-term and multi-channel temperature and humidity measurement

- Memory for up to 48,000 readings
- Maximum 4 channels
- Measuring rate: 2 s to 24 h
- Battery life: > 5 years \*
- LCD display version, 2 line
- Dimensions: 103 x 64 x 33 mm (casing without probe)
- All loggers can be calibrated (ISO and DKD)

1 channel temperature logger with internal sensor for long-term monitoring  
testo 177-T1



°C

IP 68

testo 177  
EN 12830  
According to

Meas. range -40 to +70 °C  
Memory 48,000 readings

See page 9

1 channel temperature logger with internal sensor for long-term monitoring  
testo 177-T2



°C

IP 68

testo 177  
EN 12830  
According to

Meas. range -40 to +70 °C  
Memory 48,000 readings

See page 9

3 channel temperature logger with event logging  
testo 177-T3



°C

IP 67

testo 177  
EN 12830  
According to

Meas. range -40 to +70 °C (internal)  
-40 to +120 °C (external)  
Memory 48,000 readings

See page 10

4 channel temperature logger for external thermocouples  
testo 177-T4



°C

IP 43

Meas. range -100 to +1000 °C (Type K)  
-100 to +400 °C (Type T)  
Memory 48,000 readings

See page 10

4 channel humidity/temperature logger with int. sensors and additional ext. probe socket  
testo 177-H1



°C

IP 54

%RH

td

Meas. range, inter.: 0 to 100 %RH;  
-20 to +70 °C  
-40 to +70 °C td;  
exter.: -40 to +120 °C  
Memory: 48,000 readings

See page 11

All on-site, convenient and easy to use  
testo 575 Fast Printer  
testo 580 Data Collector



Fast Printer  
testo 575

Printer type: Thermal line printer with graph function and data transfer via infrared

Data Collector  
testo 580

Memory capacity: 1 MB (approx. 500,000 values)

See page 12

\* at a measuring rate of 15 min (-10 to +50 °C)



## 1 channel temperature logger with internal sensor

°C



### testo 175-T1

1 channel temperature logger with internal sensor, wall holder and calibration protocol

Part no. 0563 1754

### Easy and highly affordable temperature monitoring

- During transport
- In refrigerated rooms
- In display cabinets
- In containers
- For monitoring rooms



### Technical data

Parameter	Temperature (°C/°F)
Sensor	NTC (internal)
No. of channels	1 channel (internal)
Measuring range	-35 °C to +70 °C
Resolution	0.1 °C of -20 to +70 °C 0.3 °C in remaining range
Accuracy/System ±1 digit	±0.5 °C (-20 to +70 °C) ±1 °C (-35 to -20.1 °C)
Memory	<b>7,800 readings</b>
Application temp.	-35 °C to +70 °C
Storage temp.	-40 °C to +85 °C
Battery type	Lithium (1AA)
Weight	90 g
Protection class	IP 68

### Ordering data/Accessories

ComSoft 3 - Basic Set, easy-to-use software with diagram and table function, interface for logger incl. desk-top holder

Part no. 0554 1759

testo 575 fast printer

Part no. 0554 1775

testo 580 data collector  
incl. readout holder for logger

Part no. 0554 1778

### Accessories and Calibration Certs./P. 14

# testo 175-T2

## 2 channel temperature logger with internal sensor/external probe socket

°C



### testo 175-T2

2 channel temperature logger with internal sensor and external probe socket, wall holder and calibration protocol

Part no. 0563 1755

### Monitor product and air temperature simultaneously

- During transport
- In refrigerated rooms
- In containers
- During production



### Technical data

Parameter	Temperature (°C/°F)
Sensor	NTC (internal + external)
No. of channels	2 channels (1int./1ext.)
Measuring range	-35 °C to +70 °C (intern.) -40 °C to +120 °C (extern.)
Resolution	0.1 °C of -20 to +70 °C 0.3 °C rem. range
Accuracy/System Internal: ±1 digit	±0.5 °C (-20 to +70 °C) ±1 °C (-35 to -20.1 °C)
Accuracy/Instr. External: ±1 digit	±0.3 °C (-25 to +70 °C) ±0.5 °C rem. range
Memory	<b>16,000 readings</b>
Application temp.	-35 °C to +70 °C
Storage temp.	-40 °C to +85 °C
Battery type	Lithium (1AA)
Weight	84 g
Protection class	IP 68

### Ordering data/Accessories

ComSoft 3 - Basic Set, easy-to-use software with diagram and table function, interface for logger incl. desk-top holder

Part no. 0554 1759

testo 575 fast printer

Part no. 0554 1775

testo 580 data collector  
incl. readout holder for logger

Part no. 0554 1778

### Accessories and Calibration Certs./ P. 14

## 2 channel temperature logger for external thermocouples

### Technical data

<b>Parameter</b>	Temperature (°C/°F)
<b>Sensor</b>	T/C-Type K or T (external)
<b>No. of channels</b>	2 channels (external)
<b>Measuring range</b>	-50 °C to +1000 °C (Type K) -50 °C to +400 °C (Type T)
<b>Resolution</b>	0.1 °C
<b>Accuracy/Instr. (without probes)</b>	±0.5 °C (-50 to +70 °C) ±0.7% of reading (70.1 to +1000 °C)
<b>±1 digit</b>	
<b>Memory</b>	<b>16,000 readings</b>
<b>Application temp.</b>	0 °C to +70 °C
<b>Storage temp.</b>	-40 °C to +85 °C
<b>Battery type</b>	Lithium (1/2 AA)
<b>Weight</b>	90 g
<b>Protection class</b>	IP 54



°C

### Ordering data/Accessories

ComSoft 3 - Basic Set, easy-to-use software with diagram and table function, interface for logger incl. desk-top holder

Part no. 0554 1759

testo 575 fast printer

Part no. 0554 1775

testo 580 data collector incl. readout holder for logger

Part no. 0554 1778

Accessories and Calibration Certs./P. 14

Probes on page 15

### Fast 2 channel temperature monitoring in

- Heating appliances
- Domestic housing
- Metal processing
- Production
- Technical laboratories

### testo 175-T3

2 channel temperature logger for external thermocouples, wall holder and calibration protocol

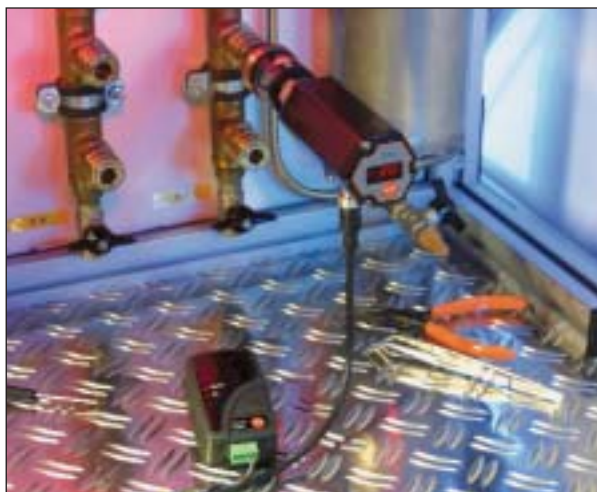
Part no. 0563 1756

# testo 175-S1

## 1 channel current/voltage logger

### Technical data

<b>Parameter</b>	Current/voltage
<b>No. of channels</b>	1 channel (external)
<b>Measuring range</b>	0 to 1 V / 0 to 10 V 0 to 20 mA / 4 to 20 mA
<b>Resolution</b>	1 mV (0 to 1 V) 10 mV (1 to 10 V) 0.01 mA (0 to 20 mA)
<b>Accuracy/System ±1 digit</b>	±2 mV(0 to 1 V) ±20 mV(1 to 10 V) ±0.05 mA(0 to 20 mA)
<b>Memory</b>	<b>16,000 readings</b>
<b>Probe</b>	Built-in screwed contact socket
<b>Application temp.</b>	-10 °C to +50 °C
<b>Storage temp.</b>	-40 °C to +70 °C
<b>Battery type</b>	Lithium (1/2 AA)
<b>Weight</b>	80 g



mA/V

### Ordering data/Accessories

ComSoft 3 - Basic Set, easy-to-use software with diagram and table function, interface for logger incl. desk-top holder

Part no. 0554 1759

testo 575 fast printer

Part no. 0554 1775

testo 580 data collector incl. readout holder for logger

Part no. 0554 1778

Accessories and Calibration Certs./ P. 14

### Easy current/voltage monitoring in

- Industrial processes
- Laboratories
- Control systems
- Development
- Production
- Transmitter outputs

### testo 175-S1

1 channel current/voltage logger with external terminal screws, wall holder and calibration protocol

Part no. 0563 1759

## 2 channel humidity/temperature logger with internal sensors

°C

%RH



### testo 175-H1

2 channel humidity/temperature logger with internal sensors, wall holder and calibration protocol

Part no. 0563 1757

EUR 170,-

### Affordable monitoring of humidity/temperature values in

- Warehouses
- Domestic housing
- Museums
- Industrial processes
- Mechanical engineering



### Technical data

Parameter	Humidity/Temperature
Sensor	Humidity sensor / NTC (internal)
No. of channels	2 channels (internal %RH; °C)
Measuring range	0 to 100 %RH -10 °C to +50 °C
Resolution	0.1 %RH / 0.1 °C
Accuracy/System ±1 digit	± 3 %RH ± 0.5 °C
Memory	3,700 readings
Application temp.	-10 °C to +50 °C
Storage temp.	-40 °C to +70 °C
Battery type	Lithium (1/2 AA)
Weight	80 g

### Ordering data/Accessories

ComSoft 3 - Basic Set, easy-to-use software with diagram and table function, interface for logger incl. desk-top holder

Part no. 0554 1759

testo 575 fast printer

Part no. 0554 1775

testo 580 data collector incl. readout holder for logger

Part no. 0554 1778

Accessories and Calibration Certs./P. 14

# testo 175-H2

## 2 channel humidity/temperature logger with internal sensors

°C

%RH



### testo 175-H2

2 channel humidity/temperature logger with internal sensors, wall holder and calibration protocol

Part no. 0563 1758

### Efficient monitoring of humidity/temperature values in

- Industrial processes
- Domestic housing
- Offices
- Warehouses
- Museums



### Technical data

Parameter	Humidity/Temperature
Sensor	Humidity sensor / NTC (internal)
No. of channels	2 channels (internal %RH; °C)
Measuring range	0 to 100 %RH -20 °C to +70 °C
Resolution	0.1 %RH / 0.1 °C
Accuracy/System ±1 digit	±3 %RH ±0.5 °C
Memory	16,000 readings
Application temp.	-20 °C to +70 °C
Storage temp.	-40 °C to +85 °C
Battery type	Lithium (1/2 AA)
Weight	85 g

### Ordering data/Accessories

ComSoft 3 - Basic Set, easy-to-use software with diagram and table function, interface for logger incl. desk-top holder

Part no. 0554 1759

testo 575 fast printer

Part no. 0554 1775

testo 580 data collector incl. readout holder for logger

Part no. 0554 1778

Accessories and Calibration Certs./P. 14



# testo 177-T1



## 1 channel temperature logger w/ int. sensor for long-term monitoring

### Technical data

Parameter	Temperature (°C/°F)
Sensor	NTC (internal)
No. of channels	1 channel (internal)
Measuring range	-40 °C to +70 °C
Resolution	0.1 °C
Accuracy/System ±1 digit	±0.4 °C; -25 to +70 °C ±0.8 °C; -40 to -25.1 °C
Memory	<b>48,000 readings</b>
Application temp.	-40 °C to +70 °C
Storage temp.	-40 °C to +85 °C
Battery life	Lithium (1AA)
Weight	111 g
Protection class	IP 68



°C

### Ordering data/Accessories

ComSoft 3 - Basic Set, easy-to-use software with diagram and table function, interface for logger incl. desk-top holder

Part no. 0554 1774

testo 575 fast printer

Part no. 0554 1775

testo 580 data collector set incl. readout holder for logger

Part no. 0554 1778

### Accessories and Calibration Certs./P. 14



### Long-term temperature monitoring in refrigeration and deep-freeze

- Freezer rooms
- Warehouses
- Refrigerated rooms
- Transport
- Containers



### testo 177-T1

1 channel temperature logger with internal sensor, wall holder and calibration protocol

Part no. 0563 1771

# testo 177-T2

## 1 channel temperature logger with internal sensor for long-term monitoring

### Technical data

Parameter	Temperature(°C/°F)
Sensor	NTC (internal)
No. of channels	1 channel (internal)
Measuring range	-40 °C to +70 °C
Resolution	0.1°C
Accuracy/System ±1 digit	±0.4 °C; -25 to +70 °C ±0.8 °C; -40 to -25,1 °C
Memory	<b>48,000 readings</b>
Application temp.	-40 °C to +70 °C
Storage temp.	-40 °C to +85 °C
Battery type	Lithium (1AA)
Weight	122 g
Protection class	IP 68



°C

### Ordering data/Accessories

ComSoft 3 - Basic Set, easy-to-use software with diagram and table function, interface for logger incl. desk-top holder

Part no. 0554 1774

testo 575 fast printer

Part no. 0554 1775

testo 580 data collector incl. readout holder for logger

Part no. 0554 1778

### Accessories and Calibration Certs./P. 14



### Long-term temperature monitoring with temperature display for

- Refrigerated rooms
- Warehouses
- Domestic housing
- Containers
- Transport



### testo 177-T2

1 channel temperature logger with internal sensor, wall holder and calibration protocol

Part no. 0563 1772

## 3 channel temperature logger with event logging

°C



### testo 177-T3

3 channel temperature logger with internal sensor, 2 probe sockets, door contact, wall holder and calibration protocol

Part no. 0563 1773

### Multi-channel temperature logger with display for monitoring transport

- Transport logs
- Refrigerated room logs
- Warehouses
- Containers
- Blood plasma monitoring



### Technical data

<b>Parameter</b>	Temperature (°C/°F)
<b>Sensor</b>	NTC (int. + 2 external) Event logging e.g. door contact
<b>No. of channels</b>	4 channels (1 int.; 2 ext.) + 1 door contact (external)
<b>Measuring range</b>	-40 °C to +70 °C (internal) -40 °C to +120 °C (extern)
<b>Resolution</b>	0.1 °C
<b>Accuracy/System</b>	±0.4 °C; -25 to +70 °C
<b>Internal: ±1 digit</b>	±0.8 °C; -40 to -25.1 °C
<b>Accuracy/Instr.</b>	±0.2 °C; -25 to +70 °C
<b>External: ±1 digit</b>	±0.4 °C rem. range
<b>Memory</b>	<b>48,000 readings</b>
<b>Application temp.</b>	-40 °C to +70 °C
<b>Storage temp.</b>	-40 °C to +85 °C
<b>Battery type</b>	Lithium (1AA)
<b>Weight</b>	127 g
<b>Protection class</b>	IP 67

### Ordering data/Accessories

ComSoft 3 - Basic Set, easy-to-use software with diagram and table function, interface for logger incl. desk-top holder

Part no. 0554 1774

testo 575 fast printer

Part no. 0554 1775

testo 580 data collector  
incl. readout holder for logger

Part no. 0554 1778

Probes on page 15

Accessories and Calibration Certs./P. 14

# testo 177-T4

## 4 channel temperature logger for external thermocouples

°C



### testo 177-T4

4 channel temperature logger for external thermocouples, wall holder and calibration protocol

Part no. 0563 1774

### Fast measurement of high temperatures in

- Hardening bays
- Mechanical engineering
- Industrial processes
- Heating installation
- Laboratories



### Technical data

<b>Parameters</b>	Temperature (°C/°F)
<b>Sensors</b>	T/C-Type K or T (4 x external)
<b>No. of channels</b>	4 channels (external)
<b>Measuring range</b>	Type K: -100 °C to +1000 °C Type T: -100 °C to +400 °C
<b>Resolution</b>	0.1 °C
<b>Accuracy/Instr.</b>	±0.3 °C; -100 to +70 °C
<b>±1 digit</b>	±0.5% of reading; +70 to +1000 °C
<b>Memory</b>	<b>48,000 readings</b>
<b>Application temp.</b>	0 °C to +70 °C
<b>Storage temp.</b>	-40 °C to +85 °C
<b>Battery type</b>	Lithium (1AA)
<b>Weight</b>	129 g
<b>Protection class</b>	IP 43

### Ordering data/Accessories

ComSoft 3 - Basic Set, easy-to-use software with diagram and table function, interface for logger incl. desk-top holder

Part no. 0554 1774

testo 575 fast printer

Part no. 0554 1775

testo 580 data collector  
incl. readout holder for logger

Part no. 0554 1778

Probes on page 15

Accessories and Calibration Certs./P. 14

## 4 channel humidity/temperature logger with internal sensors and external probe socket

Technical data	
<b>Parameters</b>	Humidity/Temperature/ Dew point
<b>Sensors</b>	Humidity sensor/ NTC (internal) NTC (external)
<b>No. of channels</b>	4 channels (3 x int. %RH; °C, °C td) (1 x external °C)
<b>Measuring range</b>	0...100 %RH -20 to +70 °C (internal) -40 to +70 °C td -40 to +120 °C (external)
<b>Resolution</b>	0.1%RH/0.1 °C/0.1 °C td
<b>Accuracy/System</b>	± 2%RH Internal: ±1 digit ± 0.5 °C;
<b>Accuracy/Instr.</b>	± 0.2 °C; -25 to +70 °C
<b>External: ±1 digit</b>	± 0.4 °C; rem. range
<b>Memory</b>	<b>48,000 readings</b>
<b>Application temp.</b>	-20 °C to +70 °C
<b>Storage temp.</b>	-40 °C to +85 °C
<b>Battery type</b>	Lithium (1AA)
<b>Weight</b>	130 g
<b>Protection class</b>	IP 54



### Ordering data/Accessories

ComSoft 3 - Basic Set, easy-to-use software with diagram and table function, interface for logger incl. desk-top holder	
Part no.	0554 1774
testo 575 fast printer	
Part no.	0554 1775
testo 580 data collector incl. readout holder for logger	
Part no.	0554 1778

### Accessories and Calibration Certs./P. 14

### Probes on page 15



°C

%RH

td

### Advantages of the testo 177-H1 data logger

- External humidity sensor resulting in fast response time
- Extensive range of temperature probes
- Measure dew point difference via connectable surface temperature probe
- Control and adjustment options thanks to adjustment set
- Various protective caps available for dirty, highly humid air or corrosive gases

### Advantages of the testo humidity sensor

The humidity sensor, developed by Testo, has been tried and tested throughout the world. The use of the sensor in the humidity data logger results in the following excellent properties:

- Efficiency
- Long-term stability
- Temperature resistance
- Robustness

### Ideal for air humidity and temperature monitoring

- In domestic buildings (See photo opposite)
- In greenhouses
- In clean rooms
- In warehouses
- During production
- In computer rooms
- In museums

### Example of application in domestic building



### Building defect or incorrect ventilation?

Moisture on ceilings and walls can be caused by faults in the building. However, in most cases it is a sign of incorrect ventilation. Long-term measurement with a data logger will clarify the situation. The data logger calculates the difference based on the wall surface temperature and the dew point temperature of the ambient air. If it is established that the room was aired on a regular basis and the walls are still moist (dew point temperature is higher than the wall surface temperature), then there must be a defect in the building or insulation is insufficient. (Send for more information on Page 16.)

### testo 177-H1

4 channel humidity/temperature logger with int. sensors and additional external probe socket, wall holder and calibration protocol

Part no. 0563 1775



## testo 575 – Fast printer and logger control in one

### Prints and analyses data on-site without a PC



To be able to quickly print out on-site is an important requirement of many users, which has now been fulfilled by Testo. The result is the testo 575 fast printer which even restarts the logger without having to connect it to a PC.

#### testo 575

testo 575 fast printer, infrared thermal line printer with graph function, incl. 1 roll of thermal paper and batteries

Part no. 0554 1775

#### testo 575 - more than just a fast printer/Fast and easy documentation without PC

##### Print functions

- Fast-action print mechanism prints up to 6 lines per second (up to 40 readings/s)
- Easy to insert paper
- Prints tables at the touch of a button
- Prints graphs at the touch of a button
- Brief information or complete memory can be printed as required
- A time mark can be set in the logger at the



- touch of a button, the printer recognises which part is to be printed
- Printer for all Testo measuring instruments with print function
- Your language can be set
- Self-adhesive paper can also be used

#### Technical data

<b>Printer</b>	Infrared thermal line printer with graph function
<b>Contrast</b>	Can be adjusted
<b>Paper width</b>	56 mm
<b>Roll diameter</b>	Up to 35 mm
<b>Paper</b>	Standard paper and two layer-adhesive
<b>Number of characters/line</b>	24
<b>Graph resolution</b>	203 dpi
<b>Operating temp.</b>	-5 to +50 °C (for 5 min at -30 °C)
<b>Storage temp.</b>	-30 to +70 °C
<b>Power</b>	6x round cell 1AA
<b>Battery life</b>	Up to 40,000 print lines
<b>Battery change</b>	By user
<b>Casing</b>	ABS (black), with "Soft-Protect" inserts

#### Control functions

- Stops testo 175/177 loggers
- Restarts logger with saved parameters (reprogramming)
- Both buttons can be blocked by PC software

## testo 580 – Compact data collector

### Collects and transports data to PC



The pocket-size testo 580 - data collector transfers data from loggers on-site for PC download

#### testo 580

testo 580 data collector incl. readout holders for testo 175/177 data loggers

Part no. 0554 1778

#### testo 580 - Data collector

- Downloads the complete memory of a testo 175/177 at the touch of a button
- Displays all status information
- Can transfer up to 25 full testo 175 loggers or 10 full testo 177 loggers
- Downloads the collected data to PC via ComSoft 3 Software.



#### Control function

- Stops loggers
- Reprograms logger
- Both control functions can be blocked via PC

#### Technical data

<b>Memory capacity</b>	1MB (ap. 500,000 values)
<b>Read out time in logger</b>	Approx. 400 readings/s
<b>Read out time/PC</b>	Approx. 1.500 readings/s
<b>Logger interface</b>	IR transfer, bidirectional
<b>PC interface</b>	RS 232 (Sub_D socket)
<b>Operating temp.</b>	-30 to +70 °C;
<b>Storage temp.</b>	-40 to +85 °C
<b>On/Off switch</b>	Off: AutoOFF after. 1 min

#### Functions:

<b>Display</b>	Memory occupied/Logger Memory occupied/testo 580 Battery life: Logger Battery life: testo 580 Data transfer in progress Data transfer ok or defective Wraparound/Display
<b>Other:</b>	Data secure even if battery is spent
<b>Power</b>	3x micro AAA cells
<b>Casing</b>	ABS (black)

## Fast filing with ComSoft 3 - Professional

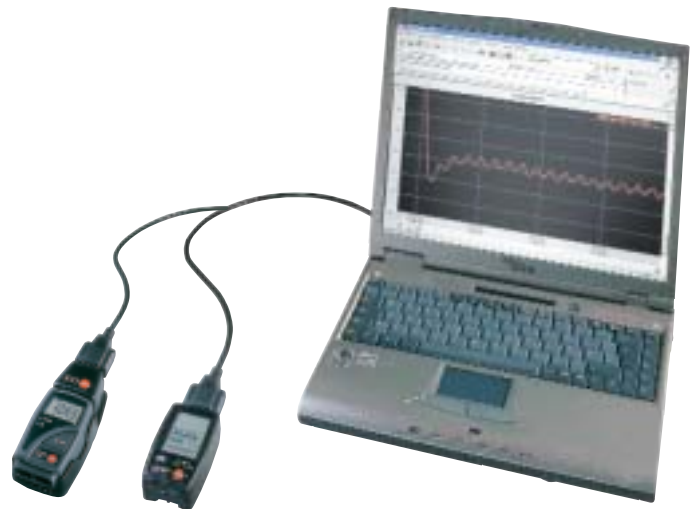
## Fast transfer and easy analysis

Once the data logger is programmed and read out, data can be analysed and saved using the Windows compatible ComSoft 3 software. The software is available in 2 versions: Basic and Professional

### ComSoft 3 - Basic: Easy operation, convenient analysis

The Basic version has all the functions needed to monitor, analyse, save and print data. The data loggers are programmed and read out using the instrument drivers available. The limit values to be monitored can be defined as required; short titles, text fields and channel names ensure clear location if several loggers are in use. Once read out, the data can be shown in table or graph form and then analysed). The crosshair function helps you to find specific readings in a large file. The course of the line is scanned with the crosshair and number, date, time and reading are displayed.

The e-mail address of the person destined to receive the data can be input when programming so that the data can be passed onto the locally installed e-mail program by simply clicking on "Send..." when the data is being read out. The saved e-mail address is entered in the address box.



#### Additional functions:

- Axes can be scaled as required
- Frequently used scales can be saved for future use
- Min/max and mean calculation in tables
- Printout as table or graph on all printers compatible with Windows
- Data export to other applications via clipboard
- Automatic search for instrument driver during initial operation (Autodetect)

### Convenient, easy-to-use software for Windows 95, 98, NT, ME, XP

- **ComSoft 3 - Basic:**  
**Reads out, displays, prints and programs all testo 175 and 177 loggers; with e-mail function**
- **ComSoft 3 - Professional:**  
**Saves data in a tree structure for easy and convenient data management.**

### ComSoft 3 - Professional: Convenient data filing included

The Professional version has all the functions of the Basic version but with additional functions (e.g. digit field, bar display, analogue instrument, xy display) and a convenient data filing function. Data can be saved in separate files so that, for example, several data loggers from different locations can be organised in a tree structure. This is particularly recommended for instruments which can manage many measurement protocols, e.g. the testo 580 data collector. The instrument driver in this instrument is set up in such a way that the directory structure of the Professional software is supported. The result is clear and comprehensible data handling.

#### Additional functions:

- Additional display options such as digit field, bar display, analogue instrument and xy plot
- Adaptation of menu and range of functions
- Input of mathematical functions with calculation on a new measurement channel
- Compensation functions 0 (mean) to 7th degree
- Selection of different print heads for printing tables and graphs
- Developer ToolBox with functions to integrate the instrument driver in non-Testo software

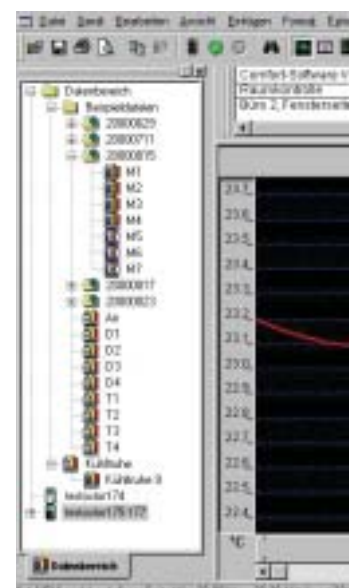
### testo 175 and testo 177 data loggers

The testo 175 and testo 177 data loggers are read out and newly programmed at the serial interface of the PC. Thanks to the fast data transfer speed of 500 values/second, even full loggers are read out in no time. The interface is non-contact (infrared) so there is no need for awkward cables. The actual readout unit can be snapped onto attached loggers and then read out on-site.

ComSoft 3 - Basic	
<b>Set ComSoft 3 - Basic for testo 175</b>	
Easy software with diagram and table display, interface incl. desk-top holder	
Part no.	0554 1759
	<input type="text"/>
<b>Set ComSoft 3 - Basic for testo 177</b>	
Part no.	0554 1774
	<input type="text"/>



ComSoft 3 - Professional	
<b>ComSoft 3 - Professional</b> with data management incl. database, analysis and graph function, data analysis, trend curve (w/o interface)	
Part no.	0554 0830
	<input type="text"/>



Interface	
<b>Interface for testo 175 /177</b> incl. desk-top holders for testo 175/177, PC connection cable (for ComSoft 3 - Professional, please order)	
Part no.	0554 1757
	<input type="text"/>

Ordering data for	Part no.
<b>testo 175/177 data loggers</b>	
<b>testo 175-T1 logger with display</b> , 1 channel temperature logger with internal sensor, wall holder and calibration protocol	0563 1754
<b>testo 175-T2 logger with display</b> , 2 channel temperature logger with int. sensor and ext. probe socket, wall holder and calibration protocol	0563 1755
<b>testo 175-T3 logger with display</b> , 2 channel temperature logger for external thermocouples, wall holder and calibration protocol	0563 1756
<b>testo 175-S1 logger without display</b> , 1 channel current/voltage logger with ext. terminal screws, wall holder and calibration protocol	0563 1759
<b>testo 175-H1 logger without display</b> , 2 channel humidity/temperature logger with internal sensors, wall holder and calibration protocol	0563 1757
<b>testo 175-H2 logger with display</b> , 2 channel humidity/temperature logger with internal sensors, wall holder and calibration protocol	0563 1758
<b>testo 177-T1 logger without display</b> , 1 channel temperature logger with internal sensor, wall holder and calibration protocol	0563 1771
<b>testo 177-T2 logger with display</b> , 1 channel temperature logger with internal sensor, wall holder and calibration protocol	0563 1772
<b>testo 177-T3 logger with display</b> , 3 channel temperature logger with int. sensor, 2 probe sockets, door contact, wall holder and calibration protocol	0563 1773
<b>testo 177-T4 logger with display</b> , 4 channel temperature logger for external thermocouples, wall holder and calibration protocol	0563 1774
<b>testo 177-H1 logger with display</b> , 4 channel humidity/temperature logger w/ int. sensors and additional ext. probe socket, wall holder and calibration protocol	0563 1775
<b>To read out data</b>	
<b>testo 580 data collector</b> incl. readout holders for testo 175/177 loggers	0554 1778
<b>testo 575 fast printer</b> , infrared thermal line printer with graph function, incl. 1 roll of thermal paper and batteries	0554 1775
<b>Spare thermal paper</b> for printer (6 rolls)	0554 0569
<b>Spare thermal paper</b> for testo 575 printer (6 rolls) Long-term legible data documentation for up to 10 years	0554 0568
<b>Label thermal paper</b> for testo 575 printer (6 rolls) for direct application	0554 0561
<b>Software für testo 175/177</b>	
<b>ComSoft 3 - Basic Set for testo 175</b> , easy-to-use software with diagram and table display, interface incl. desk-top holder	0554 1759
<b>ComSoft 3 - Basic Set for testo 177</b> , easy-to-use software with diagram and table display, interface incl. desk-top holder	0554 1774
<b>ComSoft 3 - Professional</b> with data management incl. database, analysis and graph function, data analysis, trend curve (without interface)	0554 0830
<b>Interface for testo 175/177</b> incl. desk-top holders for testo 175/177, PC connection cable (for ComSoft 3 - Professional, please order)	0554 1757
<b>Lock</b>	
<b>Lock</b> for wall holder for testo 175 / 177 data loggers	0554 1755
<b>Spare batteries</b>	
<b>Battery</b> 3.6 V / 0.8 Ah 1/2 AA; for testo 175-T3/175-H1/175-H2/175-S1	0515 0175
<b>Battery</b> 3.6 V / 1.9 Ah 1AA; for testo 175-T1/175-T2 and all testo 177 loggers	0515 0177
<b>Transport case</b>	
<b>Transport case</b> for up to 5 testo 175 data loggers, testo 575 printer testo 580 data collector and accessories	0516 1750
<b>Transport case</b> for up to 5 testo 177 data loggers, testo 575 printer, testo 580 data collector and accessories	0516 1770
<b>Accessories for testo 177-H1 data logger</b>	
Metal protection cage for humidity probes, V4A stainless steel, for velocity below 10/ms	0554 0755
Cap with mesh wire filter	0554 0757
Teflon sintered filter, for corrosive substances, high moisture level (long-term measurements), high velocities	0554 0756
Stainless steel sintered caps, to be screwed onto humidity probes for measurements at high velocities or in dirty air	0554 0647
Control and humidity adjustment set 11.3 %RH / 75.3 %RH, incl. adapter for humidity probes	0554 0660

Ordering data for	Part no.
<b>Calibration certificates for</b>	
<b>testo 177-T1</b>	
DKD calibration certificate/Temperature Temp. data loggers; cal. points -20 °C; 0 °C; +60 °C; for each channel/instr.	0520 0261
ISO calibration certificate/Temperature Temp. data loggers; cal. points -18 °C; 0 °C; +60 °C; for each channel/instr.	0520 0151
<b>testo 177-T2</b>	
DKD calibration certificate/Temperature Temp. data loggers; cal. points -20 °C; 0 °C; +60 °C; for each channel/instr.	0520 0261
ISO calibration certificate/Temperature Temp. data loggers; cal. points -18 °C; 0 °C; +60 °C; for each channel/instr.	0520 0151
<b>testo 177-T3</b>	
DKD calibration certificate/Temperature Temp. data loggers; cal. points -20 °C; 0 °C; +60 °C; for each channel/instr.	0520 0261
ISO calibration certificate/Temperature Temp. data loggers; cal. points -18 °C; 0 °C; +60 °C; for each channel/instr.	0520 0151
<b>testo 177-T4</b>	
DKD calibration certificate/Temperature Temp. data loggers; cal. points -20 °C; 0 °C; +60 °C; for each channel/instr.	0520 0261
ISO calibration certificate/Temperature Temp. data loggers; cal. points -18 °C; 0 °C; +60 °C; for each channel/instr.	0520 0151
ISO calibration certificate/Temperature Temp. data loggers; cal. point -80 °C	0520 0101
ISO calibration certificate/Temperature Temp. data loggers; cal. points 0 °C; +150 °C; +300 °C	0520 0021
<b>testo 177-H1</b>	
DKD calibration certificate/Humidity Humidity data loggers; cal. points 11.3 %RH and 75.3 %RH at +25 °C; for each channel/instr.	0520 0246
ISO calibration certificate/Humidity Humidity data loggers; cal. points 11.3 %RH and 75.3 %RH at +25 °C; for each channel/instr.	0520 0076
DKD calibration certificate/Temperature Temp. data loggers; cal. points -20 °C; 0 °C; +60 °C; for each channel/instr.	0520 0261
ISO calibration certificate/Temperature Temp. data loggers; cal. points -18 °C; 0 °C; +60 °C; for each channel/instr.	0520 0151
<b>testo 175-T1</b>	
DKD calibration certificate/Temperature Temp. data loggers; cal. points -20 °C; 0 °C; +60 °C; for each channel/instr.	0520 0261
ISO calibration certificate/Temperature Temp. data loggers; cal. points -18 °C; 0 °C; +60 °C; for each channel/instr.	0520 0151
<b>testo 175-T2</b>	
DKD calibration certificate/Temperature Temp. data loggers; cal. points -20 °C; 0 °C; +60 °C; for each channel/instr.	0520 0261
ISO calibration certificate/Temperature Temp. data loggers; cal. points -18 °C; 0 °C; +60 °C; for each channel/instr.	0520 0151
<b>testo 175-T3</b>	
DKD calibration certificate/Temperature Temp. data loggers; cal. points -20 °C; 0 °C; +60 °C; for each channel/instr.	0520 0261
ISO calibration certificate/Temperature Temp. data loggers; cal. points -18 °C; 0 °C; +60 °C; for each channel/instr.	0520 0151
<b>testo 175-H1</b>	
DKD calibration certificate/Humidity Humidity data loggers; cal. points 11.3 %RH and 75.3 %RH at +25 °C; for each channel/instr.	0520 0246
ISO calibration certificate/Humidity Humidity data loggers; cal. points 11.3 %RH and 75.3 %RH at +25 °C; for each channel/instr.	0520 0076
ISO calibration certificate/Temperature Temp. data loggers; cal. points -18 °C; 0 °C; +60 °C; for each channel/instr.	0520 0151
<b>testo 175-H2</b>	
DKD calibration certificate/Humidity Humidity data loggers; cal. points 11.3 %RH and 75.3 %RH at +25 °C; for each channel/instr.	0520 0246
ISO calibration certificate/Humidity Humidity data loggers; cal. points 11.3 %RH and 75.3 %RH at +25 °C; for each channel/instr.	0520 0076
ISO calibration certificate/Temperature Temp. data loggers; cal. points -18 °C; 0 °C; +60 °C; for each channel/instr.	0520 0151
<b>testo 175-S1</b>	
ISO calibration certificate/Electrical Calibration via measuring ranges 0-20 mA; 4-20 mA; 0-1 V; 0-10 V	0520 1000
<b>ISO/DKD calibration certificates are possible for all loggers at freely selectable points within the measuring range. Contact us for more information.</b>	



## Ordering data

Accurate NTC probes for testo 175-T2, 177-T3, 177-H1 data loggers							
Stationary probes	Illustration	Meas. range	Accuracy	t <sub>99</sub>	Connection Cable length	Part no.	
♣ Stub probe, IP 54	35 mm Ø 3 mm	-20 to +70 °C	±0.2 °C (-20...+40 °C)	15 s		0628 7510	
♣ Mounting probe with aluminium sleeve, IP65	40 mm Ø 6 mm	-20 to +90 °C	0 to 70 °C → ±0.2K rem. range ±0.5K	60 s	Fixed cable 2.40 m	0628 7503*	
♣ Accurate immersion/penetration probe, IP 67	40 mm Ø 3 mm	-35 to +80 °C	±0.2 °C (-25 to +74.9 °C) ±0.4 °C (-35 to -25.1 °C) ±0.4 °C (+75 to +80 °C)	5 s	Fixed cable 6 m	0610 1725*	
♣ Screw-in probe for measurements in difficult to access places, M6 thread, IP 54	40 mm Ø 3 mm	-50 to +80 °C	±0.5% of reading (+100 to +150 °C)	70 s	Fixed cable 2 m	0628 7514*	
Probe for surface measurement	40 mm 8 x 8 mm	-50 to +80 °C	±0.2 °C (0 to +70 °C)	150 s	Fixed cable 2 m	0628 7516*	
Wall surface temperature probe, e.g. as proof of damage to building material	40 mm 8 x 8 mm	-50 to +80 °C	±0.2 °C (0 to +70 °C)	20 s	Fixed cable 3 m	0628 7507	
Pipe probe with Velcro, for pipe diameter of max. 75 mm	300 mm 30 mm	-50 to +70 °C	±0.2 °C (-25 to +70 °C) ±0.4 °C (-50 to -25.1 °C)		Fixed cable 1.5 m	0613 4611	
♣ Food probe (IP65) made of stainless steel, PUR cable up to +80 °C can be used, IP54 plug-in connection	125 mm Ø 4 mm	-50 to +150 °C	±0.5% of read. (+100...+150 °C) ±0.2 °C (-25 to +74.9 °C) ±0.4 °C (-50 to -25.1 °C) ±0.4 °C (+75 to +99.9 °C)	8 s	Fixed cable 1.5 m	0613 2211*	
♣ Robust food penetration probe with special handle, IP 65, reinforced cable (PUR) and reinforced bending protection	115 mm Ø 5 mm	-50 to +150 °C	±0.5% of read. (+100 to +150 °C) ±0.2 °C (-25 to +74.9 °C) ±0.4 °C (-50 to -25.1 °C) ±0.4 °C (+75 to +99.9 °C)	7 s	Fixed cable 1.4 m	0613 2411*	
♣ Frozen food probe, no drilling required	110 mm Ø 8 mm	-50 to +140 °C	±0.5% of read. (+100 to +140 °C) ±0.2 °C (-25 to +74.9 °C) ±0.4 °C (-50 to -25.1 °C) ±0.4 °C (+75 to +99.9 °C)	20 s	Plug-in cable 1.5 m	0613 3211*	
♣ Robust, affordable air probe, to check storage temperature, for example	110 mm Ø 4 mm	-50 to +150 °C	±0.5% of read. (+100 to +150 °C) ±0.2 °C (-25 to +74.9 °C) ±0.4 °C (-50 to -25.1 °C) ±0.4 °C (+75 to +99.9 °C)	60 s	Fixed cable 1.2 m	0613 1711*	


\* Probe tested in accordance with EN 12830 as to suitability for transport and storage

Accurate thermocouple probes for testo 175-T3, 177-T4 data loggers							
Stationary probes	Illustration	Meas. range	Accuracy	t <sub>99</sub>	Connection Cable length	Part no.	
♣ Mounting probe with stainless steel sleeve	40 mm Ø 6 mm	-50 to +205 °C	±1.5	20 s	Fixed cable 1.9 m	0628 7533	
Pipe wrap probe with Velcro, for temperature measurement on pipes with diameter to max. 120 mm, T <sub>max</sub> +120 °C	395 mm 20 mm	0 to +120 °C		90 s	Fixed cable 1.5 m	0628 0020	
Pipe wrap probe for pipe diameter 5 to 65 mm, with exchangeable meas. head Measuring range short-term to +280 °C	5 to 65 mm	-60 to +130 °C	Class 2	5 s	Fixed cable 1.2 m	0602 4592	
Mounted surface temperature probe with outer thread M 14x1.5 and 2 nuts, quick-action surface probe with cross-band	40 mm Ø 6 mm	-50 to +180 °C	Class 2	3 s	Fixed cable 2 m	0628 7521	
Thermocouple, flexible, 1500 mm long, fibre glass	1500 mm Ø 1.5 mm	-50 to +400 °C	Class 2	5 s		0602 0645	
Thermocouple, flexible, 1500 mm long, Teflon	1500 mm Ø 1.5 mm	-50 to +250 °C	Class 2	5 s		0602 0646	
Immersion measurement tip, bendable	500 mm Ø 1.5 mm	-200 to +1000 °C	Class 1	5 s		0602 5792	
Magnetic probe, adhesive force approx. 10 N, with adhesive magnets, for higher temperatures, for measurements on metal surfaces	75 mm Ø 21 mm	-50 to +400 °C	Class 2		Fixed cable 1.6 m	0602 4892	
♣ Water-tight immersion/penetration probe	110 mm Ø 4 mm	-60 to +400 °C	Class 2	7 s	Fixed cable 1.2 m	0602 1292	
♣ Accurate and fast immersion probe, water-tight	300 mm Ø 1.5 mm	-60 to +1000 °C	Class 1	2 s	Fixed cable 1.2 m	0602 0592	
♣ Robust, affordable air probe	110 mm Ø 4 mm	-60 to +400 °C	Class 2	25 s	Fixed cable 1.2 m	0602 1792	

♣ The protection class specified for the data loggers are achieved with these probes.

To be copied as often as required! Simply enter the quantities required and fax to us.

Qty.	testo 175/testo 177 data loggers	Part no.	Unit price	Total price
	testo 175-T1 logger with display, 1 channel temperature logger	0563 1754		
	testo 175-T2 logger with display, 2 channel temperature logger	0563 1755		
	testo 175-T3 logger with display, 2 channel temperature logger	0563 1756		
	testo 175-S1 logger without display, 1 channel current/voltage logger	0563 1759		
	testo 175-H1 logger without display, 2 channel humidity/temperature logger	0563 1757		
	testo 175-H2 logger with display, 2 channel humidity/temperature logger	0563 1758		
	testo 177-T1 logger without display, 1 channel temperature logger	0563 1771		
	testo 177-T2 logger with display, 1 channel temperature logger	0563 1772		
	testo 177-T3 logger with display, 3 channel temperature logger	0563 1773		
	testo 177-T4 logger with display, 4 channel temperature logger	0563 1774		
	testo 177-H1 logger with display, 4 channel humidity/temperature logger	0563 1775		
	testo 575 fast printer, infrared thermal line printer	0554 1775		
	Spare thermal paper, 6 rolls	0554 0568		
	testo 580 data collector, incl. readout holders for testo 175/177 data loggers	0554 1778		
	ComSoft 3 - Basic Set for testo 175, easy-to-use software incl. interface, desk-top holder	0554 1759		
	ComSoft 3 - Basic Set for testo 177, easy-to-use software incl. interface, desk-top holder	0554 1774		
	ComSoft 3 - Professional, with data management incl. database (without interface)	0554 0830		
	Interface for testo 175/177, incl. desk-top holders for testo 175/177 (for ComSoft 3 - Professional, please order)	0554 1757		
	ISO/DKD calibration certificates (please select on Page 14 and enter Part no.)	0520 _____		

Qty.	testo 174 data logger – reliable, compact, affordable	Part no.	Unit price	Total price
	 <p>Large display in a small casing which shows current reading, max./min. values, programmed limit values or battery life in days. Secure data – data will not be lost even if battery is spent Measuring range: -30 to +70 °C Memory: 3900 readings (testo 580 data collector and testo 575 printer cannot be used)</p>			
	<b>Starter set with testo 174 mini temperature data logger, ComSoft 3 - Basic, wall holder and interface incl. PC connection cable</b>	0563 1742		
	<b>testo 174 mini temperature data logger, incl. wall holder and lock</b>	0563 1741		
	<b>Please send me more information on testo 174</b>	0980 3951		

Subject to change without notice



- Please send me information on testostor 171:  
Data logger with aluminium casing  
Read out and program using PALM® PDA



- Please send me information on testo 454:  
System logger with up to 200 measurement channels

- Please send me more information on how to avoid dampness.

Fax to

Sender

Name Department

Company

Address

Telephone/Fax

Date, Signature