

# **LTE Windows USB Driver For MBIM Installation Guide**

## **LTE Module Series**

Rev. LTE\_Windows\_USB\_Driver\_For\_MBIM\_Installation\_Guide\_V1.1

Date: 2019-12-02

Status: Released

**Our aim is to provide customers with timely and comprehensive service. For any assistance, please contact our company headquarters:**

**Quectel Wireless Solutions Co., Ltd.**

Building 5, Shanghai Business Park Phase III (Area B), No.1016 Tianlin Road, Minhang District, Shanghai, China 200233

Tel: +86 21 5108 6236

Email: [info@quectel.com](mailto:info@quectel.com)

**Or our local office. For more information, please visit:**

<http://www.quectel.com/support/sales.htm>

**For technical support, or to report documentation errors, please visit:**

<http://www.quectel.com/support/technical.htm>

Or email to: [support@quectel.com](mailto:support@quectel.com)

## **GENERAL NOTES**

QUECTEL OFFERS THE INFORMATION AS A SERVICE TO ITS CUSTOMERS. THE INFORMATION PROVIDED IS BASED UPON CUSTOMERS' REQUIREMENTS. QUECTEL MAKES EVERY EFFORT TO ENSURE THE QUALITY OF THE INFORMATION IT MAKES AVAILABLE. QUECTEL DOES NOT MAKE ANY WARRANTY AS TO THE INFORMATION CONTAINED HEREIN, AND DOES NOT ACCEPT ANY LIABILITY FOR ANY INJURY, LOSS OR DAMAGE OF ANY KIND INCURRED BY USE OF OR RELIANCE UPON THE INFORMATION. ALL INFORMATION SUPPLIED HEREIN IS SUBJECT TO CHANGE WITHOUT PRIOR NOTICE.

## **COPYRIGHT**

THE INFORMATION CONTAINED HERE IS PROPRIETARY TECHNICAL INFORMATION OF QUECTEL WIRELESS SOLUTIONS CO., LTD. TRANSMITTING, REPRODUCTION, DISSEMINATION AND EDITING OF THIS DOCUMENT AS WELL AS UTILIZATION OF THE CONTENT ARE FORBIDDEN WITHOUT PERMISSION. OFFENDERS WILL BE HELD LIABLE FOR PAYMENT OF DAMAGES. ALL RIGHTS ARE RESERVED IN THE EVENT OF A PATENT GRANT OR REGISTRATION OF A UTILITY MODEL OR DESIGN.

***Copyright © Quectel Wireless Solutions Co., Ltd. 2019. All rights reserved.***

# About the Document

## History

Revision	Date	Author	Description
1.0	2019-03-18	Isaac WANG	Initial
1.1	2019-12-02	Isaac WANG	<ol style="list-style-type: none"><li>1. Added the applicable modules such as AG15, AG520R, BG95, EM05, EM18, and EM20 (Table 1).</li><li>2. Modified descriptions of installation and uninstallation steps.</li></ol>

## Contents

About the Document.....	2
Contents .....	3
Figure Index .....	4
Table Index.....	5
<b>1 Introduction .....</b>	<b>6</b>
1.1. Applicable Products .....	6
<b>2 Installation .....</b>	<b>7</b>
2.1. Preparation.....	7
2.2. Installation Procedures .....	8
2.3. Check on Installation Result .....	13
2.4. Reconfiguration of Network Port Protocol .....	15
2.5. Test.....	16
<b>3 Uninstallation .....</b>	<b>17</b>
3.1. Uninstallation Procedures .....	17
3.2. Check on Uninstallation Result.....	21
<b>4 Appendix A References.....</b>	<b>22</b>

## Figure Index

FIGURE 1: INSTALLATION PREPARATION.....	8
FIGURE 2: CHOOSE DESTINATION LOCATION .....	9
FIGURE 3: COPYING FILES .....	10
FIGURE 4: INSTALLING .....	11
FIGURE 5: COMPLETE INSTALLATION .....	12
FIGURE 6: DEVICE MANAGER WHEN DRIVER INSTALLATION SUCCEEDED.....	13
FIGURE 7: DRIVER NOT INSTALLED OR INSTALLATION FAILED .....	14
FIGURE 8: DISPLAY OF MBIM NETWORK ADAPTER .....	15
FIGURE 9: MODULE TEST VIA QNAVIGATOR .....	16
FIGURE 10: FIND THE INSTALLED DRIVER .....	17
FIGURE 11: UNINSTALL THE DRIVER.....	17
FIGURE 12: UNINSTALLATION PREPARATION .....	18
FIGURE 13: CONFIRM UNINSTALLATION .....	18
FIGURE 14: AUTOMATIC UNINSTALLATION .....	19
FIGURE 15: DRIVER UNINSTALLATION PROGRESS .....	19
FIGURE 16: UNINSTALLATION COMPLETE.....	20
FIGURE 17: DEVICE MANAGER WHEN DRIVER UNINSTALLATION SUCCEEDED .....	21

## Table Index

TABLE 1: APPLICABLE MODULES.....	6
TABLE 2: RELATED DOCUMENTS.....	22
TABLE 3: TERMS AND ABBREVIATIONS.....	22

# 1 Introduction

This document illustrates how to install and uninstall the USB driver for MBIM for Quectel modules running on Windows operating systems, with provided installation package.

The installation package (*Quectel\_LTE\_Windows\_USB\_Driver\_For\_MBIM*) supports Windows 8 and Windows 10 operating systems. This document mainly takes the installation procedures on Windows 10 as an example.

## NOTE

Currently provided package is only for the serial port, while the driver for MBIM functions is provided on Windows 8, Windows 10 and later Windows systems.

## 1.1. Applicable Products

The document is applicable to the Quectel modules as shown in the following table.

**Table 1: Applicable Modules**

Module Series		
LTE	LTE Standard	<ul style="list-style-type: none"> <li>● EC2x: EC21/EC25/ EC20 R2.0/EC20 R2.1</li> <li>● EG9x: EG91/EG95</li> <li>● EM05</li> </ul>
	LTE-A	<ul style="list-style-type: none"> <li>● Ex06: EG06/EP06/EM06</li> <li>● Ex12: EG12/EM12</li> </ul>
	Automotive	<ul style="list-style-type: none"> <li>● AGxx: AG35/AG15/AG520R</li> </ul>
	LPWA	<ul style="list-style-type: none"> <li>● BGxx: BG96/BG95</li> </ul>

## 2 Installation

This chapter mainly describes how to install the driver with the provided installation package.

### NOTE

Please contact Quectel technical support for the latest installation package in advance.

### 2.1. Preparation

Before installing the driver, please make sure that the module is connected to the computer and powered on. If no Quectel driver has ever been installed in the system, a prompt indicating that the driver of the new module needs updating may appear. In this case, please ignore the prompt and start the installation as described in **Chapter 2.2**.



## 2.2. Installation Procedures

This chapter illustrates the installation of *Quectel\_LTE\_Windows\_USB\_Driver\_For\_MBIM*. The detailed steps are as follows.

### 1. Installation Preparation

Open the installation package, double click the installation program *setup.exe*, Then, as shown in the following figure, the “Preparing to Install...” box will be displayed.

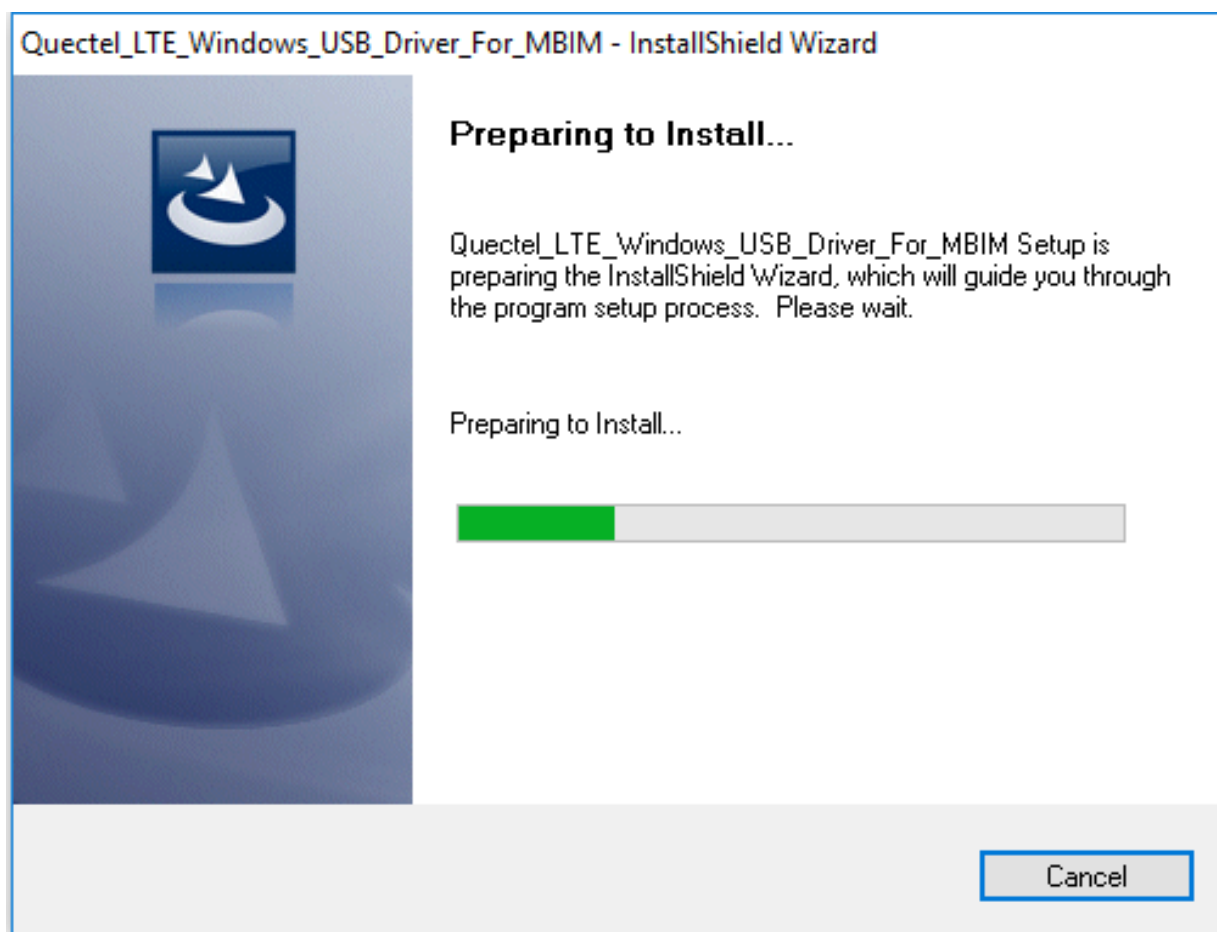


Figure 1: Installation Preparation

## 2. Choose Destination Location

Please click “**Next**” straightforward to install the driver to the default installation location. If it is needed to change the location, please select the custom installation location by clicking “**Browse...**”.

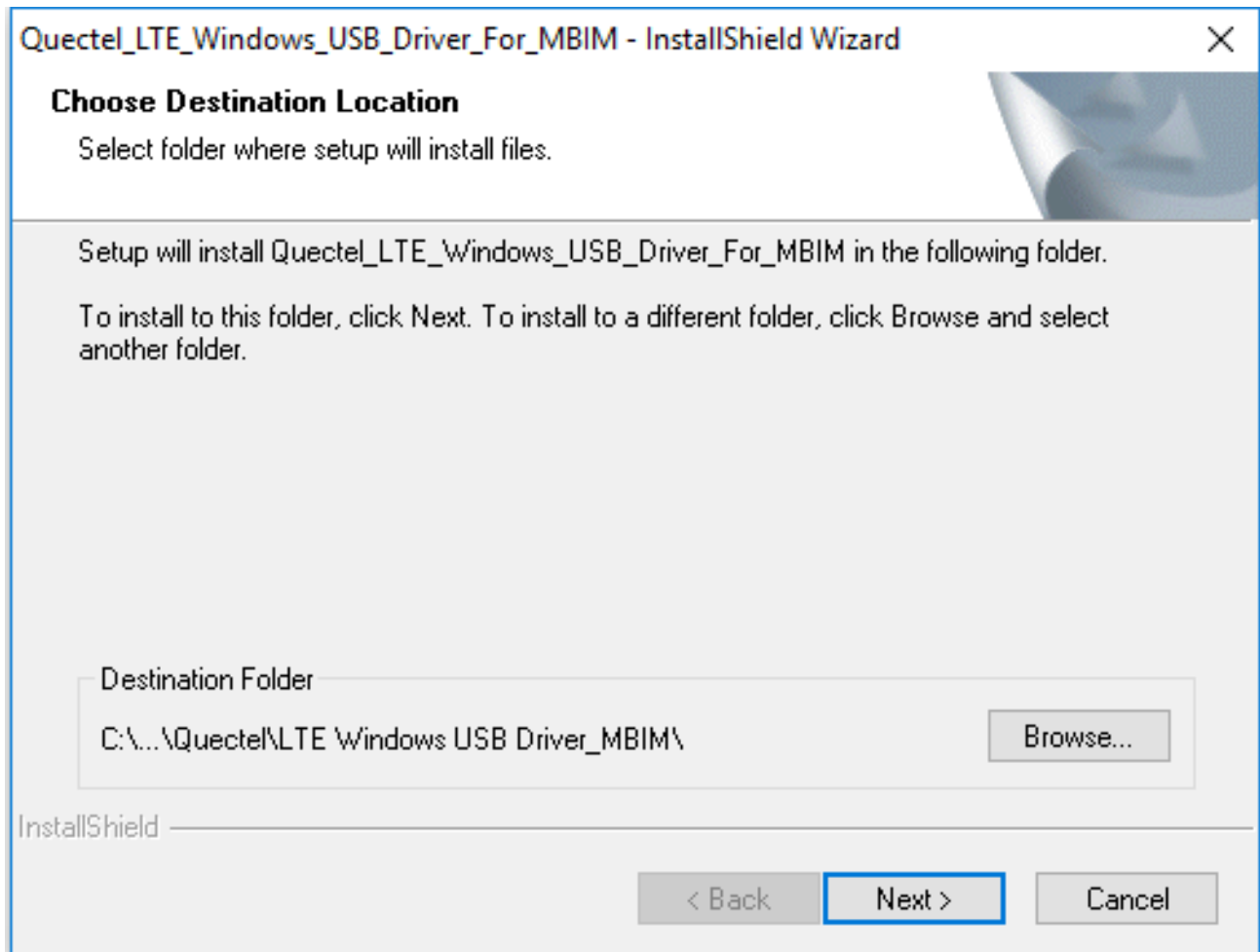


Figure 2: Choose Destination Location

### 3. Starting File Copying

When the following window appears, click **“Next”**. Then, the program will automatically start copying the driver files needed for the installation.

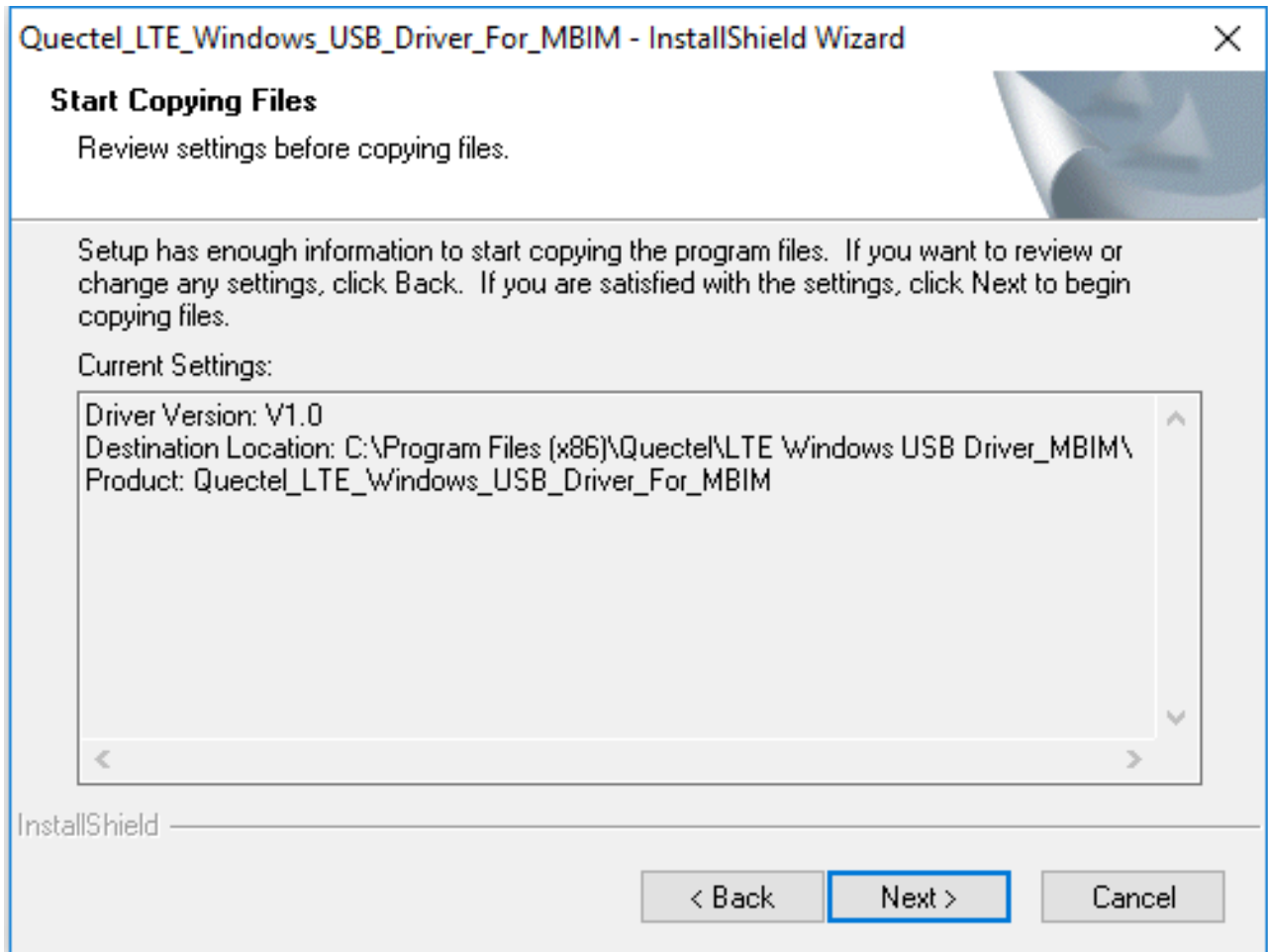


Figure 3: Copying Files

#### 4. Installing

After the files copying is complete, the driver will be installed automatically, as shown below. The setup process may take some time, please wait patiently until it is finished.

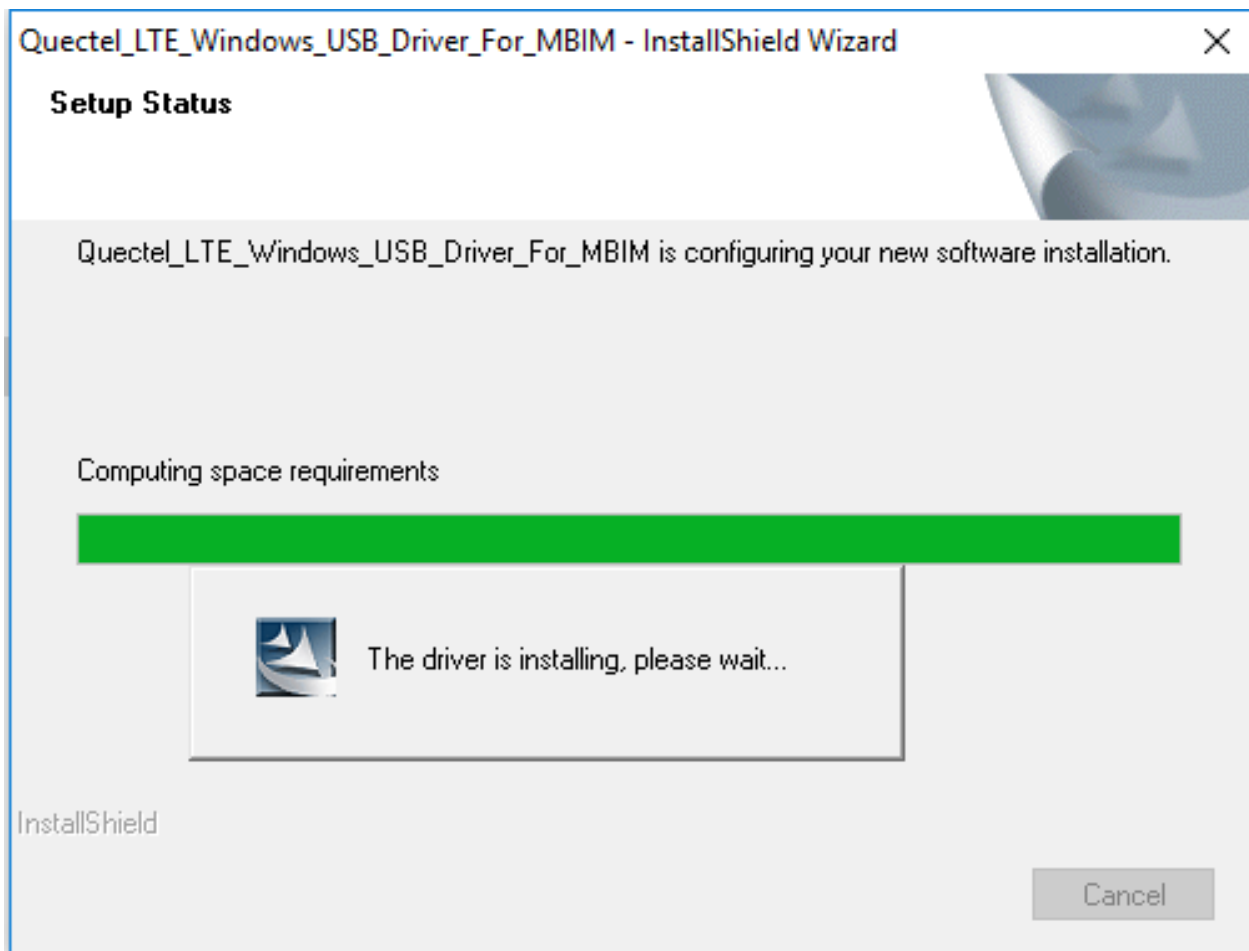


Figure 4: Installing

## 5. Installation Complete

After the installation is complete, the installer will present the window shown by the following figure, which indicates the driver has been installed successfully. Click “**Finish**” to complete the installation.

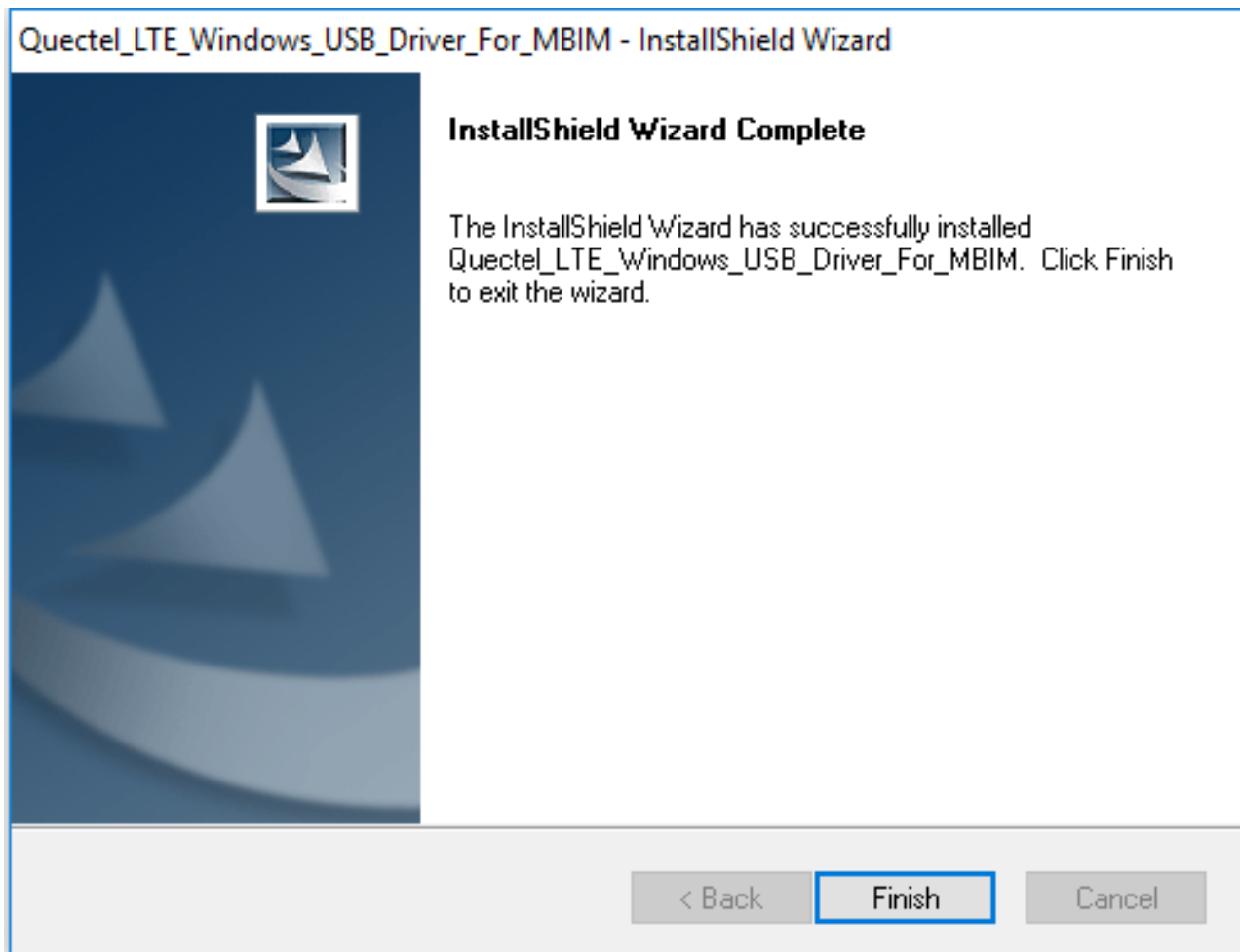


Figure 5: Complete Installation

## 2.3. Check on Installation Result

After the installation, the installation result can be checked on through “**Device Manager**”. “**Device Manager**” can be found in “**Hardware and Sound**” category of “**Control Panel**” of Windows systems.

- When the driver is successfully installed, the “**Device Manager**” on Windows 10 will show as below.

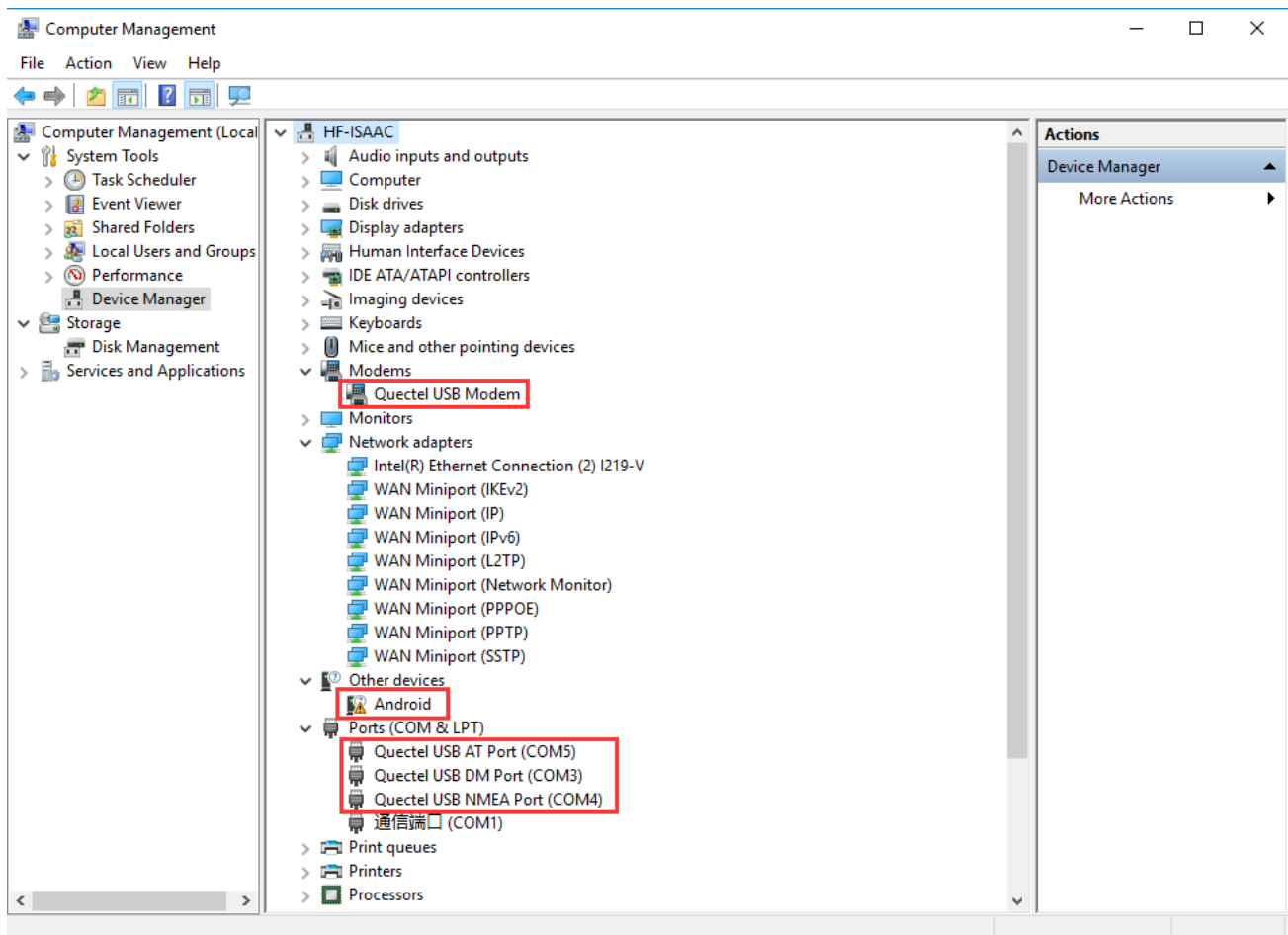
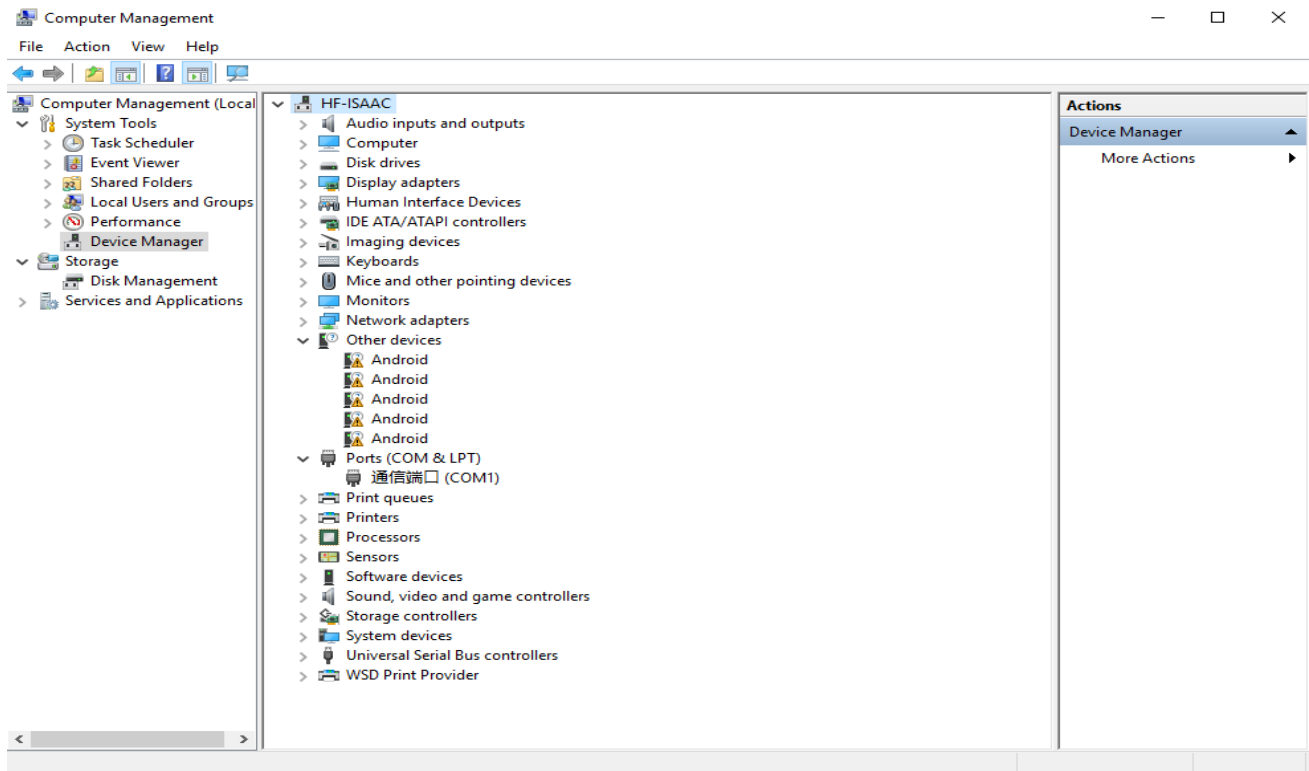


Figure 6: Device Manager When Driver Installation Succeeded

- If the driver is not installed or the installation failed, the “**Device Manager**” on Windows 10 will show as below (for reference only).



**Figure 7: Driver not Installed or Installation Failed**

## 2.4. Reconfiguration of Network Port Protocol

Provided that a yellow triangle icon ⚠ appears below “Other devices” in “Device Manager” as shown in Figure 7, the network port protocol needs to be reconfigured.

In this case, please send AT command **AT+QCFG="usbnet", 2"** to the module through the serial port tool and then, after **OK** is returned, restart the module. The response **OK** indicates that the network port protocol is reconfigured successfully and the configuration takes effect after the module is restarted.

After the network port protocol is successfully reconfigured, the MBIM network adapter will be shown in “Device Manager” as below.

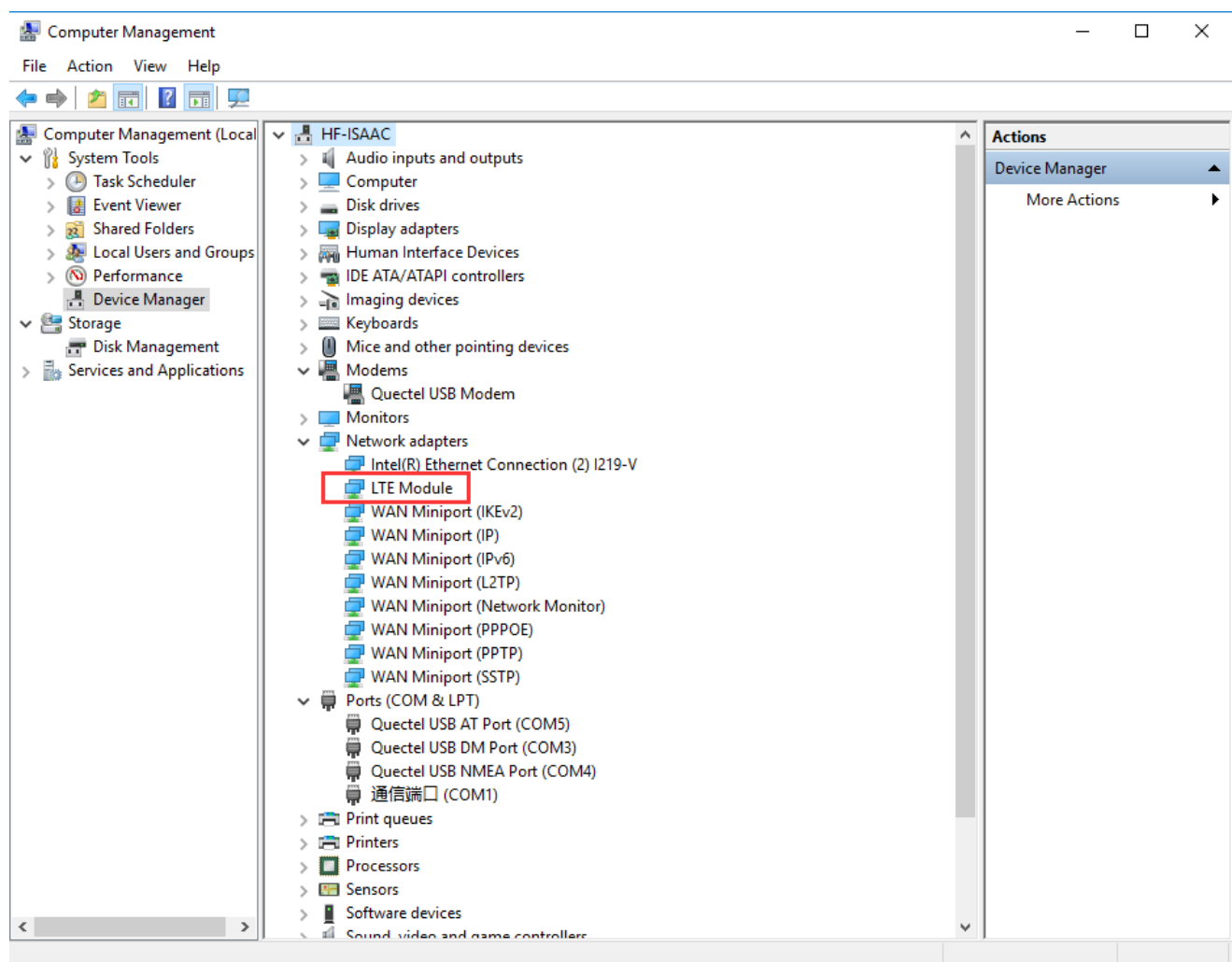


Figure 8: Display of MBIM Network Adapter



## 2.5. Test

After the driver has been installed, users can test whether the driver works normally through QNavigator. AT command being transmitted normally through QNavigator indicates that the basic function of the driver works normally. BG96 module is used as an example in the following figure to demonstrate details of the test.

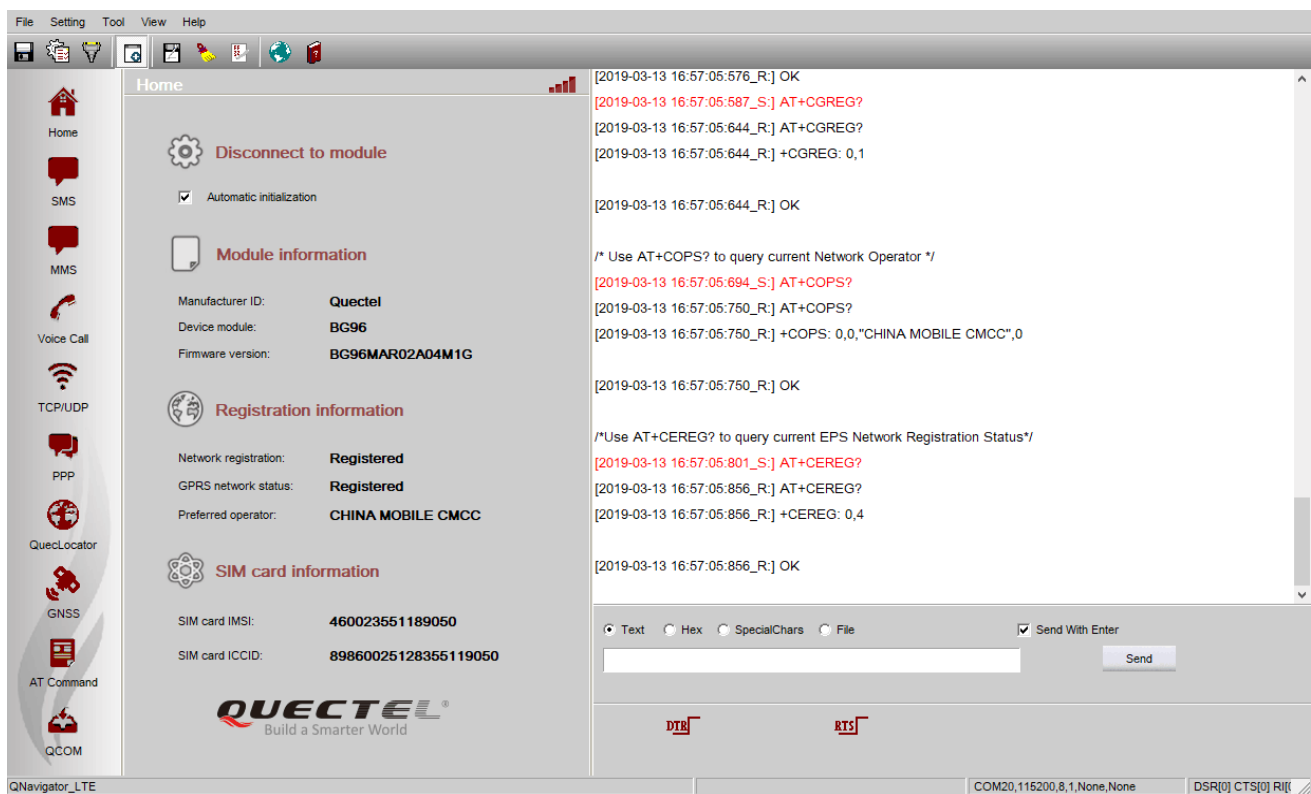


Figure 9: Module Test via QNavigator

### NOTE

For detailed information about QNavigator, please refer to *Quectel\_QNavigator\_User\_Guide*.

# 3 Uninstallation

This chapter mainly describes how to uninstall the driver. The uninstallation can be started through “Uninstall or change a program” on “Control Panel” in Windows system.

## 3.1. Uninstallation Procedures

### 1. Select the Driver from “Uninstall or change a program”

Enter “Control Panel” → “Programs” → “Uninstall or change a program” and select the installed driver. Then, click “Uninstall” in the window to start the uninstallation, as shown in the following figures.

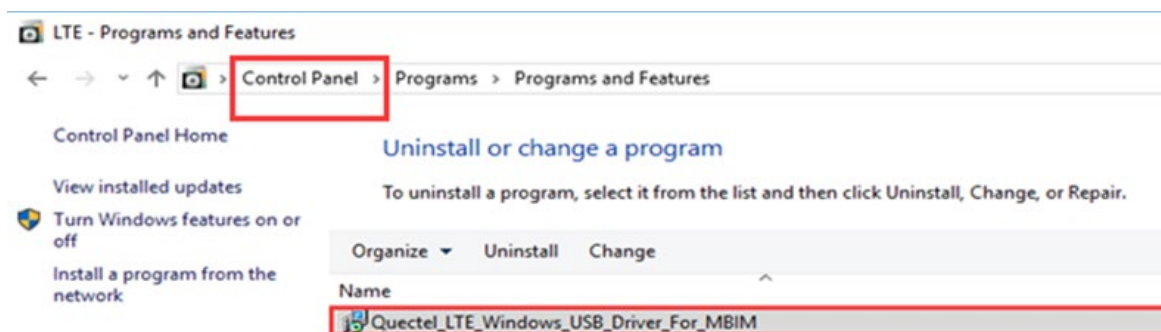


Figure 10: Find the Installed Driver

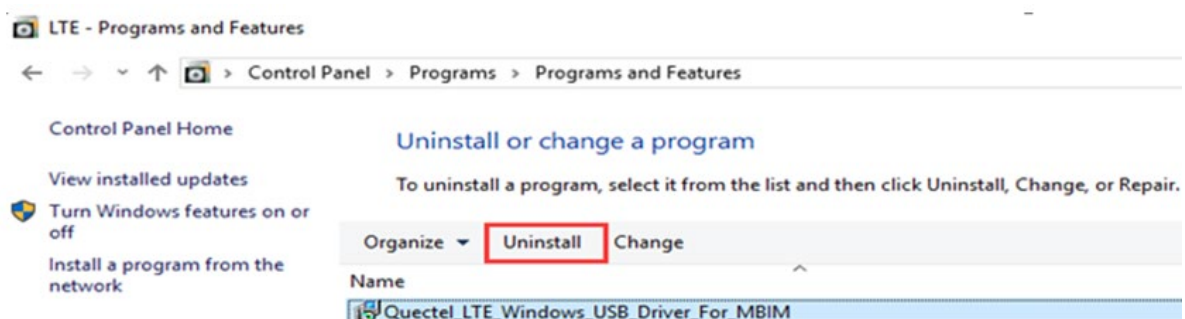


Figure 11: Uninstall the Driver

## 2. Uninstallation Preparation

After “**Uninstall**” is clicked, the window shown by the following figure will be displayed.

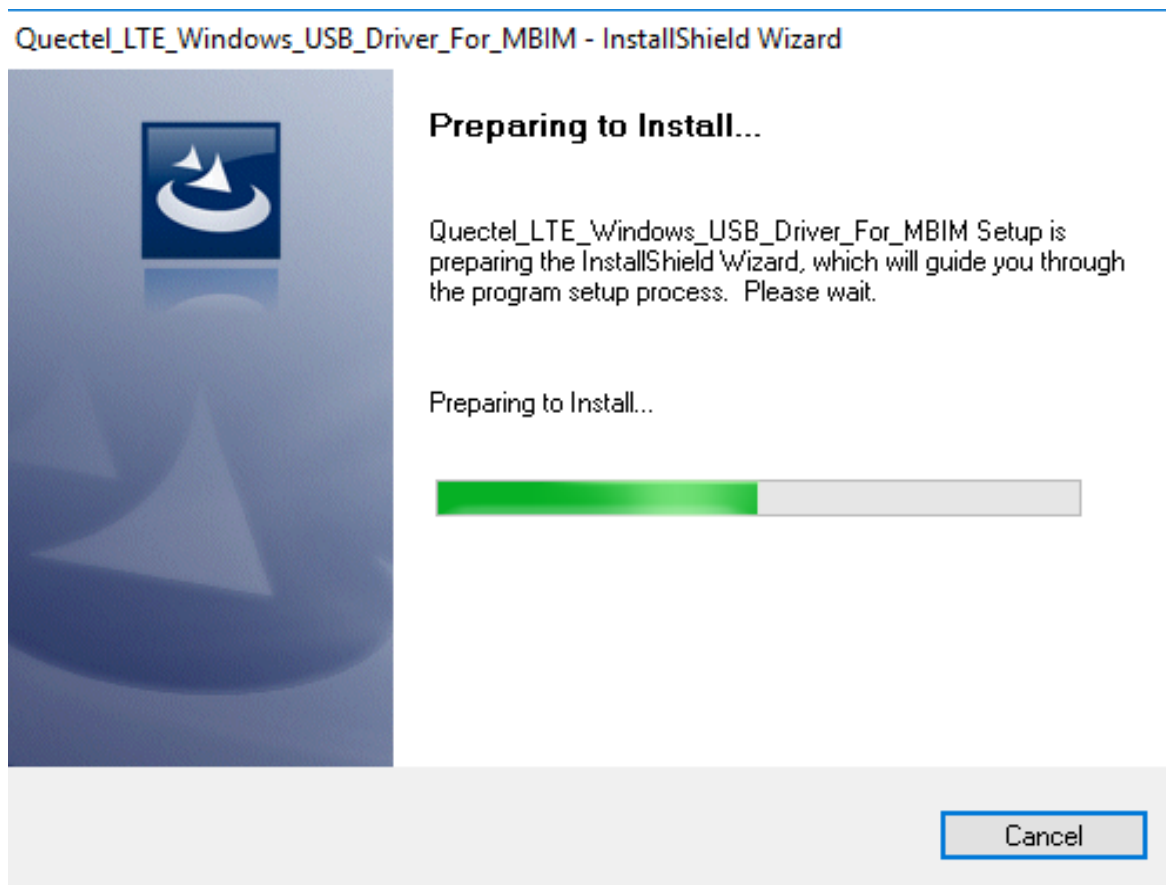


Figure 12: Uninstallation Preparation

## 3. Uninstallation Confirmation

Click “**Yes**” to confirm the uninstallation, as shown below.

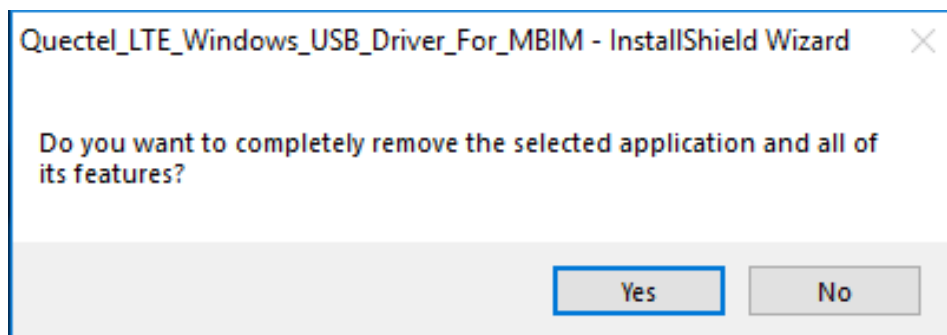
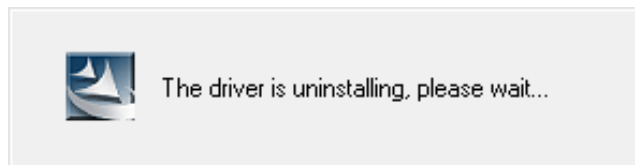


Figure 13: Confirm Uninstallation

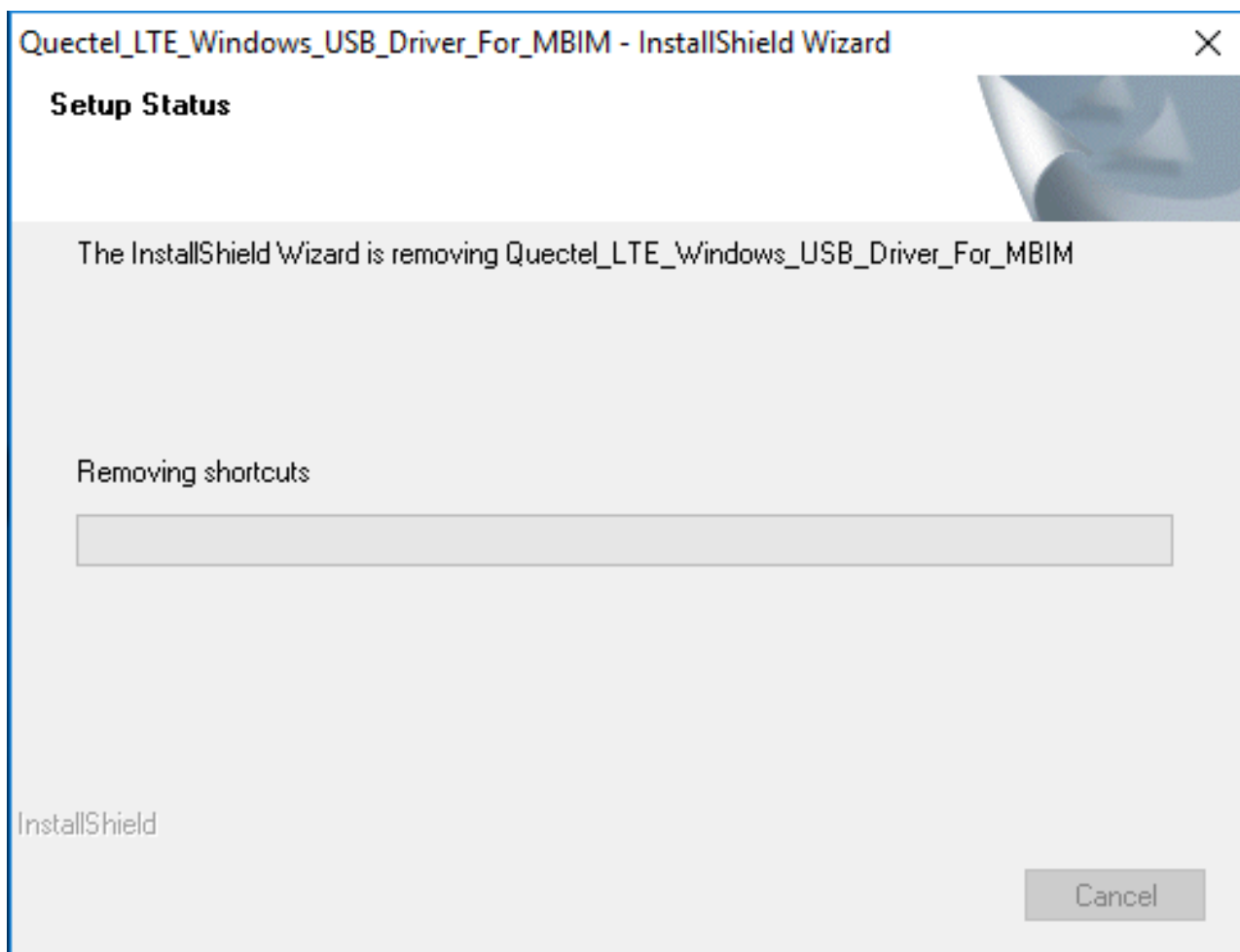
#### 4. Uninstalling

After confirmation of the uninstallation, the uninstallation will start. The uninstalling process may take some time, so, please wait until it is finished.



**Figure 14: Automatic Uninstallation**

Please wait patiently during the file removing process as shown below.



**Figure 15: Driver Uninstallation Progress**

## 5. Uninstallation Complete

After the uninstallation is complete, the installer will present the window shown by the following figure, which indicates the driver has been uninstalled successfully. Click **Finish** to finish the uninstallation.

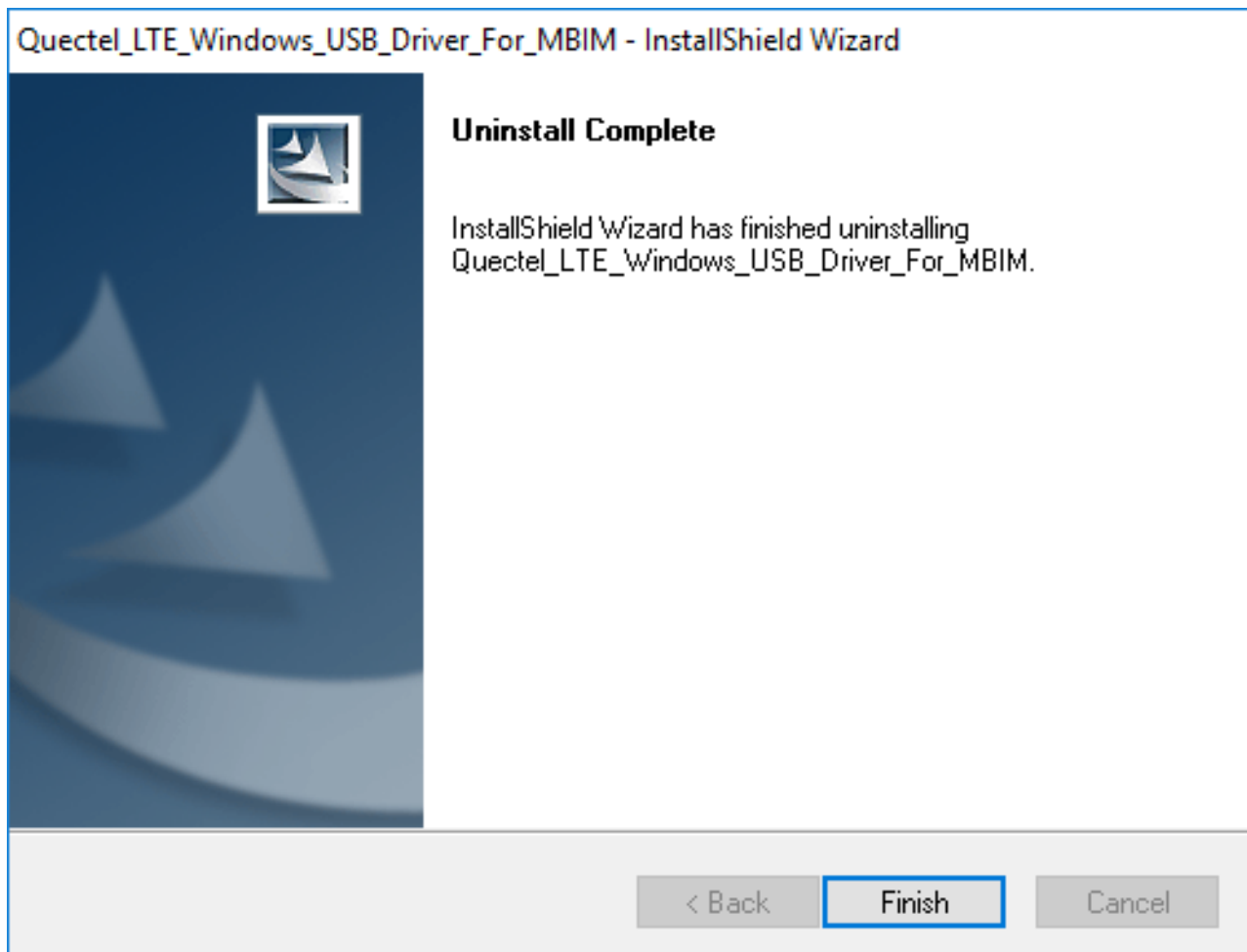


Figure 16: Uninstallation Complete

### 3.2. Check on Uninstallation Result

After the driver has been uninstalled successfully, the driver will switch to an uninstalled status. Users can check whether the driver has been uninstalled successfully through “**Computer Management**”, as illustrated below. The following information in the red square indicates that the driver has been uninstalled successfully.

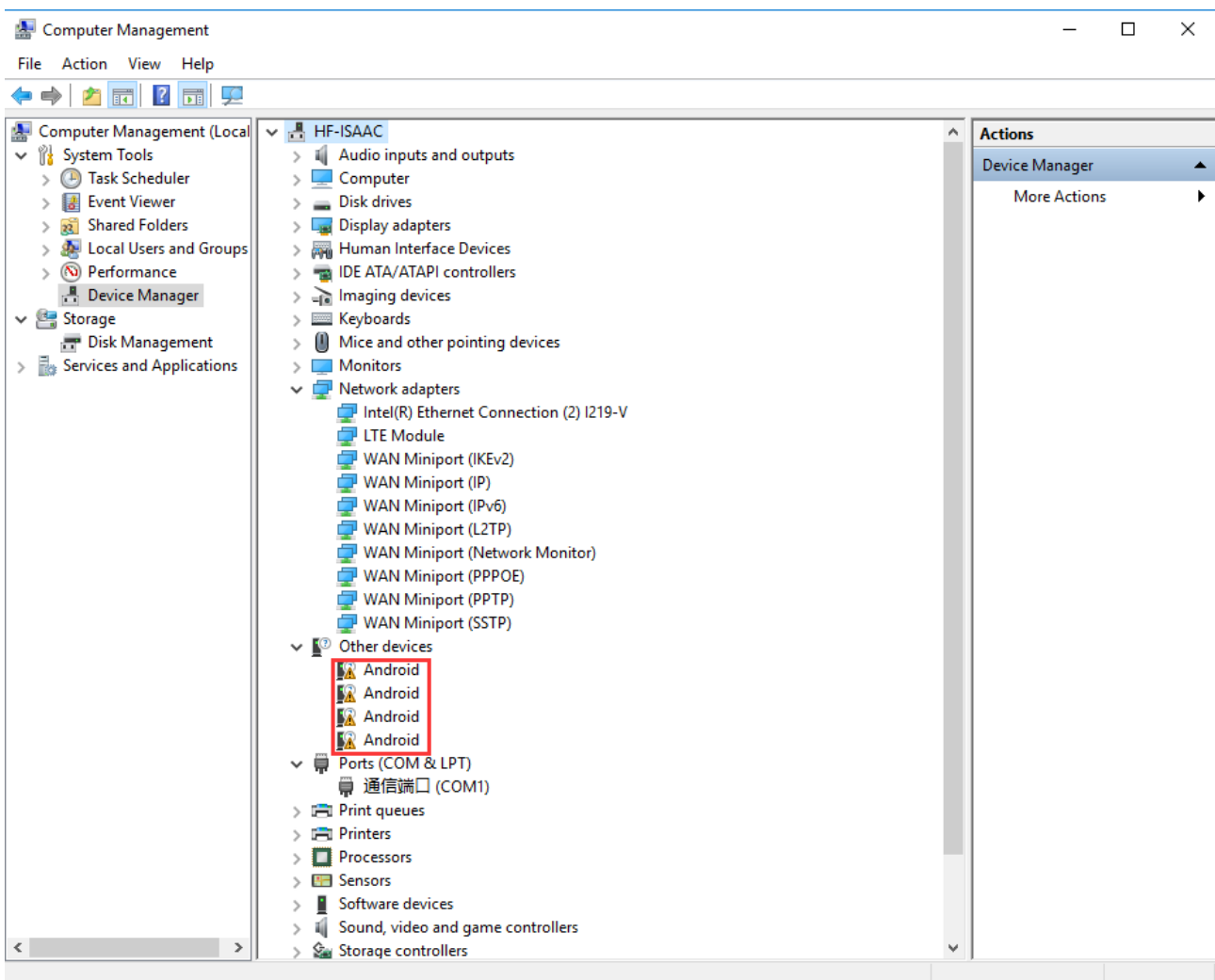


Figure 17: Device Manager When Driver Uninstallation Succeeded

## 4 Appendix A References

**Table 2: Related Documents**

SN	Document Name	Remark
[1]	Quectel_QNavigator_User_Guide	User guide of the serial port tool QNavigator

**Table 3: Terms and Abbreviations**

Abbreviation	Description
LTE	Long-Term Evolution
LTE-A	LTE-Advanced
LPWA	Low-Power Wide-Area
PC	Personal Computer
USB	Universal Serial Bus
MBIM	Mobile Broadband Interface Model