

## Measure Power with Power-Mate

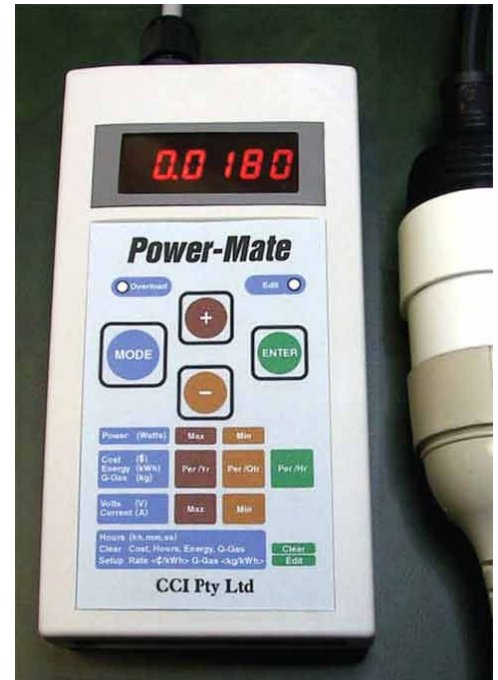
### Accurate measurement of power usage for mains operated equipment

Measures Watts – Volts – Amps – Cost & Cost per Hour – Cost per Quarter – Cost per Year – Energy – Greenhouse Gas generation – Run Time

Many organisations are subject to soaring power bills but can't work out why. With the Power-Mate you can take back control through accurate measurement. It is now possible to determine the actual running costs of equipment or even identify faulty appliances that are using more power than they should.

The Power-Mate 10A model accurately covers the range of loads from 100mW to 2.4kW, or currents from 1mA to 10 Amps. With the unit's Max and Min feature, start up and surge currents of electrical items are automatically captured for display.

- Simple to check individual appliances
- Portable
- Rugged – built to last
- Simple to program and use
- Corrected for Power Factor
- Volts Readout
- Peak capture for Volts Amps & Power
- Calculates quarterly and Yearly running costs
- Displays actual accumulated running cost
- Shows True RMS Volts & Amps
- Resolution down to 0.01W
- No Batteries Required
- Examine the loads Power-Factor, Apparent Power and Reactive Power.
- Does not lose data after a power interruption – simply resumes where it left off



### Features:

- Simple: Just plug in your appliance and switch it on
- Fast: Tests for most appliances are completed within seconds
- Accurate: Digitally filtered, 24-bit precision (1mA, 10mW)
- Thorough: Measures cost, power, greenhouse gas emission, mains supply voltage, and much more
- Safe: Failsafe design ensures safety of the operator and appliance at all times, for both 10A and 15A versions
- Large, bright easy to read LED display
- Colour coded front decal simplifies operation
- Unique to Power-Mate - what amount of greenhouse gas is produced in order to power your appliances



Industrial Electronics

Esis Pty Ltd  
PO Box 450, Pennant Hills  
Sydney NSW 1715 AUSTRALIA  
ACN 000 955 742 ABN 43 000 955 742  
Ph: +61 2 9481 7420  
Fax: +61 2 9481 7267  
Email: [esis.enq@esis.com.au](mailto:esis.enq@esis.com.au)

## Benefits & Applications:

- Make informed decisions when purchasing new appliances
- Know the running cost of your existing appliance
- Manage & reduce your electricity bill
- Provides a practical tool to minimise production of greenhouse gas pollution
- Perform “What-If?” analyses. For example, “How much \$money\$ will I save by turning my electric heater thermostat down one degree?”

## Modes / Functions

Cumulative & predicted measurement of:

- Power consumption
- Running Cost (per hour, per week, per quarter or per year)
- Greenhouse Gas emission

Instantaneous, minimum & maximum measurement of:

- Supply voltage
- Current
- Power
- Power Factor, VA & VAR

## Accuracy / Resolution

- 24-bit precision (down to 0.01mA, 10mW)
- Digital filtering

## Ease of Connection

Just plug your appliance into the POWER-MATE and start measuring.

## Models available:

- PM10A** Power-Mate 10A (includes 10A piggy-back plug for use with domestic/office appliances)
- PM10AHD** Power-Mate 10A Heavy Duty: Internally rated up to 15A, but supplied with a 10A piggy-back plug for convenience – perfect for monitoring equipment with higher inrush currents
- PM15A** Power-Mate 15A (includes separate 15A plug and socket, requires a 15A power point)