



Quality  
Endorsed  
Company  
ISO-9001 Lic: 5330  
SAI Global

# KBIM2-P Industrial Panel Mounted Keyboard with Integral Mouse



## FEATURES

- Tactile feedback
- Fully sealed to IP65
- Ergonomic joystick
- Panel mounted
- Fully serviceable
- Solid constructoin
- Fully rugged

## PRODUCT DESCRIPTION

The KBIM2-P is a 82 key, full QWERTY panel mounted keyboard with an integral joystick, designed for use in industrial and other harsh environments.

Features include membrane keys to provide positive tactile feedback and joystick using patented opto-strain-gauge technology. The joystick displacement is proportional to the movement speed of the cursor.

Sealing to IP65, the KBIM2-P is ideally suited to harsh environments such as those found in mining, defence food processing and manufacturing.

*Due to continuing developments, specifications are subject to change without notice. No liability is accepted for errors or omissions.*



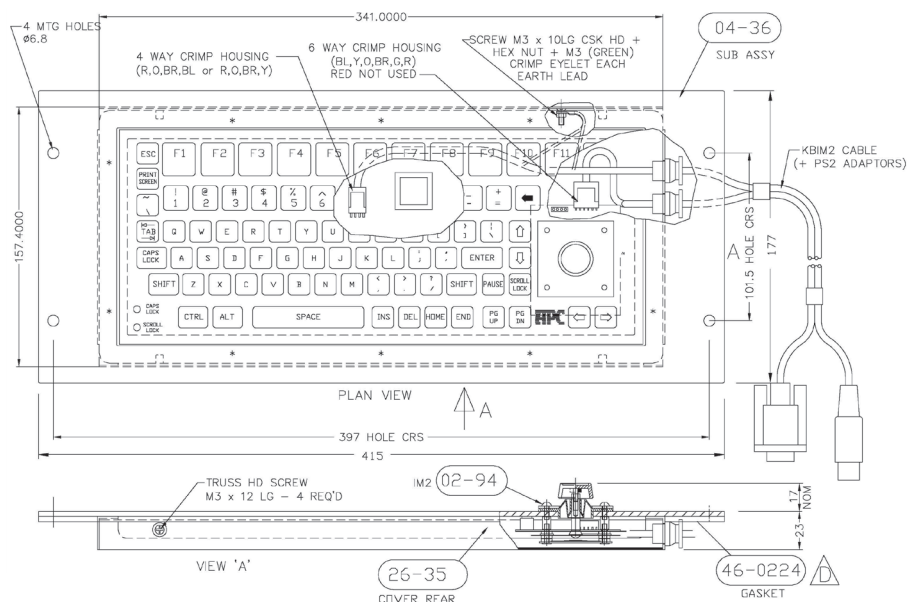
**www.esis.com.au**  
Ph 02 9481 7420  
Fax 02 9481 7267  
esis.enq@esis.com.au

Industrial Electronics



Australian Owned & Operated

# KBIM2-P Industrial Panel Mounted Keyboard with Integral Mouse



## Technical Specifications

Key functions:	82 key
Format:	QWERTY
Construction:	Mild steel powder coated
EMC immunity:	CE: EN50082-2: 1995 Generic Immunity Standard Part 2, Industrial environment
EMC emission:	FCC Part 15 Subpart B; Class B Certification EN55022 Class B
Connector:	2m coiled lean DIN plug PS/2
Sealing:	IP65

## Environmental

Operating temperature:	0°C to + 60°C
Storage temperature:	-20°C to + 70°C

## Physical Dimensions

Gross weight:	approx 2.1kg
Unit dimensions:	Desk mount 353(W) x 162(D) x 45(H)mm

## Options:

KBIM2-P	Panel Mount version
KBIM2-P-SS	Panel mount, stainless steel
KBIM2-P-SPEC	Panel Mount with boot over j/s

*Due to continuing developments, specifications are subject to change without notice. No liability is accepted for errors or omissions.*