

iLog

The iLog data logger provides technological abilities for monitoring temperature and humidity sensitive products while supporting compliance requirements.



Features

- 32,000 readings
- Large LCD display with multi-functional viewing
- Visual and audible alarms
- Bookmark capabilities
- Wide temperature range (high heat, ambient, refrigerated, frozen and dry ice)
- Accuracy $\pm 0.35^{\circ}\text{C}$
- Detachable, customizable external sensor lengths and probe styles

Temp Ranges	°F	°C
C	-4 to +212	-20 to +100
D	-40 to +158	-40 to +70
N	-148 to +104	-100 to +40
Z	32 to +302	0 to +150
	RH	RH

iLog Product Codes

Product Code	Logger Type	Temp Range	Sensor
EI-HS-D-32-L	Humidity & Temperature	D	2 Internal
EI-IN-D-32-L	Temperature	D	1 Internal
EI-IN-N-32-L	Temperature	N	1 Internal
EI-IN-DN-32-L	Temperature	D & N	2 Internal
EI-1E-D-32-L	Temperature	D	1 Internal & 1 External
EI-1E-DC-32-L	Temperature	D & C	1 Internal & 1 External
EI-1E-DN-32-L	Temperature	D & N	1 Internal & 1 External
EI-1E-DZ-32-L	Temperature	D & Z	1 Internal & 1 External
EI-2E-C-32-L	Temperature	C	2 External
EI-2E-D-32-L	Temperature	D	2 External
EI-2E-N-32-L	Temperature	N	2 External
EI-2E-Z-32-L	Temperature	Z	2 External
EI-2E-DC-32-L	Temperature	D & C	2 External
EI-2E-DN-32-L	Temperature	D & N	2 External
EI-2E-DZ-32-L	Temperature	D & Z	2 External
EI-2E-CN-32-L	Temperature	C & N	2 External
EI-2E-CZ-32-L	Temperature	C & Z	2 External
EI-2E-NZ-32-L	Temperature	N & Z	2 External

Certifications:

**2
Year
Warranty**

bsi.

**21 CFR
Part 11**

CE

**EN12830
Compliant**

**NIST
Traceable**

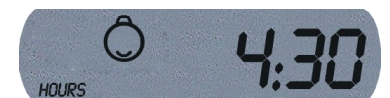
iLog Specifications

Description	Specifications
Memory Options	32K; 32,064 readings (with one sensor) 16,032 readings each sensor (with two sensors)
Program Interval	5 seconds to 10 days
Time Accuracy	±1 minute per month at ambient temperatures
Sensors	Internal and/or external
Resolution	0.1 °C / 0.1 °F / 0.1%
Sensor Response Time	Internal sensor – T90 of 12 minutes in moving air External sensor – T90 of 5 minutes
LCD Operating Range	-20 °C to +70 °C (-4 °F to +158 °F)
Alarm Thresholds	Two
Alarm Configuration	High alarm; low alarm
Bookmark	Yes
Preprogram Option	User programmable
Start Option	Start with magnetic key swipe or at pre-defined time
Auto Restart	No
Start Delay	Yes
Stop Option	After pre-defined readings or timer
Size	Diameter 76mm, height 18mm
Weight	68 grams (including battery); Varies for external sensor iLog
Case Material	Polycarbonate
Battery	User replaceable 3.6V ½AA lithium battery
IP Rating	Internal sensor iLog – IP67 External sensor iLog – IP65
Warranty	2 years (excluding battery)
Calibration	NIST Traceable upon request
Accuracy Certificate	Yes
Other Certification	ISO9001:2008, CE, RoHS, EN12830
Battery Life	1-2 years (depending on usage)
Interface	USB or serial
Software	Console Pro
Default File Format	PDF & LRF
Data Export	TXT, CSV, SYLK & LCF
Security	Password protected (programmable using Console Pro Software)

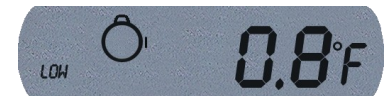
Multi-functional display



Average reading of external sensor (in degrees Celsius)



Logger armed for timer start



Lowest recorded reading of external sensor (in degrees Fahrenheit)



Time the internal sensor spent under lower alarm specification at the end of the logging cycle



Time the internal sensor spent over specifications. High alarm is on, battery is low, Trip has ended.



iLog Accessories

Escort USB Interface

Product Code: EA-INT-USB

- Communicates with iLog temperature & humidity data loggers
 - USB connector



Escort Interface (Serial)

Product Code: EA-INT-U

- Communicates with iLog temperature & humidity data loggers
- DB9 connector

Escort Magnetic Key Ring

Product Code: EA-KEY

- Starts the iLog
- Time/date stamping to place a bookmark on the reading



ESCORT Alarm Link

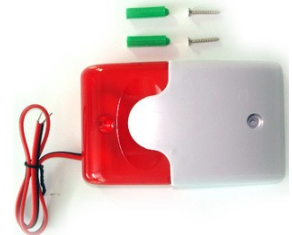
Product Code: EA-ALK

- Serves as an interface to additional accessories (i.e. siren, horn)

Red Strobe & Siren

Product Code: EA-ALARM

- Combined strobe and siren serve as additional audible/visual indicators



Escort Wall Mount Holder

Product Code: EA-INT-HLD

- Holds iLog and interfaces
- Uses four screws for easy mounting

iLog Chart Reader

Product Code: EI-CR

The iLog Chart Reader is a portable, battery operated, rechargeable download/print solution for when a PC is unavailable. This allows for quick downloads of easy to read graphs or out of specification list formats while on the go.

Printouts include:

- Serial Number
- Location
- Cargo Descriptor
- Number of Logs
- Sampling Frequency
- Start/Finish Times

Product Code:	EI-CR
Memory:	Up to 1MB of logged data
Size:	225 x 120 x 100mm
Weight:	1.125 kilograms
Memory:	1MB of logged data
Software:	Console Pro

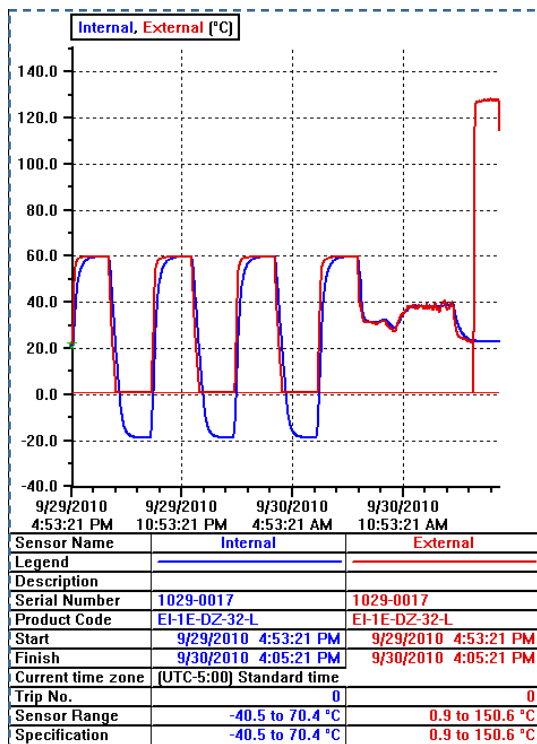


Console Pro

Features:

- Program and configure logger
- Download & view data analysis
- View current readings
- Export data in CSV & TXT format
- Re-arm function

Graph



Readings & Summary

1301-0011-0001 # 6 logger				
Index	Elapsed Time	Date	Time	Freezer (°C)
Serial Number				1301-0011
H/w version				2.2x
Trip No.				1
Description				
Battery				92.5 %
Original time zone				(UTC+8:00) Standard time
Current time zone				(UTC-5:00) Standard time
Start				6/17/2013 5:00:00 AM
Finish				6/17/2013 9:35:00 PM
Sampling				5 Minutes
Readings				200 [995 Minutes]
Active				-40.5 to 70.4 °C
Specification				-35.0 to -15.0 °C
Average				-20.5
Highest				24.7
Lowest				-24.9
PHI Aerobic				0.74
PHI Anaerobic				0.52
MKT				-1.01
Total No. of Pulses				-342.94
Growing Degree Day				0.0
Out Of Specification				80 Minutes
				10 Minutes from -14.9 to -10.0
				5 Minutes from -9.9 to -5.0
				5 Minutes from -4.9 to 0.0
				450 Seconds from 0.1 to 5.0
				5 Minutes from 5.1 to 10.0
				5 Minutes from 10.1 to 15.0
				5 Minutes from 15.1 to 20.0
				2250 Seconds from 20.1 to 25.0
1	00:00:00	6/17/2013	5:00:00 AM	1.8
2	00:05:00	6/17/2013	5:05:00 AM	-1.5
3	00:10:00	6/17/2013	5:10:00 AM	-7.7
4	00:15:00	6/17/2013	5:15:00 AM	-11.6
5	00:20:00	6/17/2013	5:20:00 AM	-14.7
6	00:25:00	6/17/2013	5:25:00 AM	-16.9
7	00:30:00	6/17/2013	5:30:00 AM	-18.5

Views

Views	Links	Analysis
Readings		
List of readings		
Readings and summary		
2D Graph		
Line		
Step		
Summary		
Overview		
Statistics		
Analysis		
Out Of Specification		
Marked Readings		

Links

Views	Links	Analysis
Description	Details	
1301-0011	6/17/2013 6:0...	
Freezer	-40.5 to 70.4 °C	
0111-5555	8/24/2012 4:4...	
Air Temp	-40.5 to 70.4 °C	
Humidity	0 to 100 %RH	
QLD CHILLER (0127-3...	7/24/2012 6:0...	
Internal	-40.5 to 70.4 °C	
0133-008	12/17/2012 1:...	
Internal	0.9 to 125 °C	
External	25 to 150.6 °C	

Analysis

Views	Links	Analysis
Calculated Values		
Mean Average		
Highest reading		
Lowest reading		
Dewpoint information		
PHI Process Hygiene Index (PHI)		
MKT Mean Kinetic Temperature (MKT)		
Growing Degree Day		
User Defined		
Custom		