

Getac

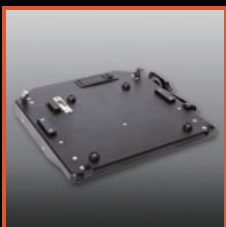
Rugged Mobile Computing Solutions

V110

Fully Rugged Convertible Notebook



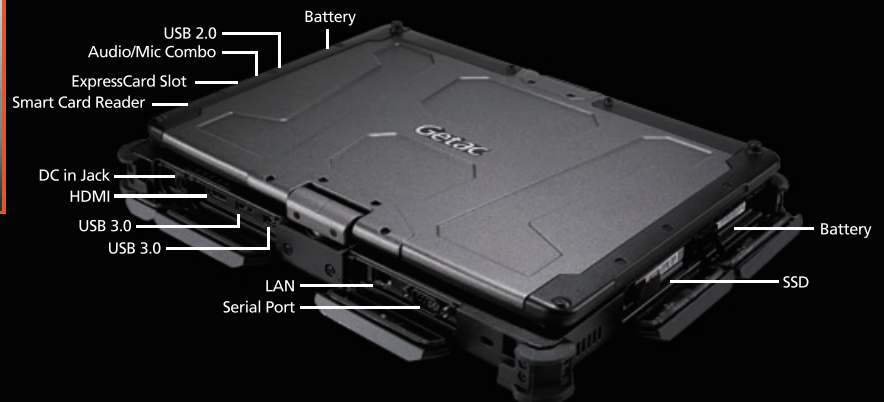
- 4th Generation Intel® Core™ i7 / i5 vPro™ Processor
- 11.6" Getac Sunlight Readable Display: 800 Nits with Touchscreen
- LifeSupport™ Battery Swappable Technology
- Optional Dual Mode Touchscreen (multi-touch and digitizer)
- Reliable, Speedy Solid-State Driver Storage



Vehicle Dock



Office Dock



Rugged Mobile Computing Solutions

www.esis.com.au
Ph 02 9481 7420
Fax 02 9481 7267
esis.enq@esis.com.au

ESIS
Industrial Electronics



Specifications

Operating System	Windows® 7 Professional Windows® 8 Professional	Communication Interface	10/100/1000 base-T Ethernet Intel® Dual Band Wireless-AC 7260; 802.11ac Bluetooth (v4.0 class 1) ⁱ Optional SiRFstar1V™ GPS Optional Gobi™ mobile broadband
Mobile Computing Platform	Intel® Core™ i7 vPro™ Technology - Intel® Core i7-4600U vPro™ Processor 2.1GHz, Max. 3.3GHz with Intel® Turbo Boost Technology - 4MB L3 Intel® Smart Cache Intel® Core™ i5 vPro™ Technology - Intel® Core i5-4300U vPro™ Processor 1.9GHz, Max. 2.9GHz with Intel® Turbo Boost Technology - 3MB L3 Intel® Smart Cache	Software	Getac Utility Getac Camera Getac V-GPS Adobe® Reader®
VGA Controller	Intel® HD Graphics 4400	Security Feature	Intel® vPro™ Technology TPM 1.2 Optional RFID and contactless smart card reader ⁱⁱ Kensington lock
Display	11.6" TFT LCD HD (1366 x 768) 800 nits LumiBond® display with Getac sunlight readable technology Capacitive multi-touch screen	Power	AC Adapter (65W, 100-240VAC, 50/60 Hz) Li-Ion smart battery (11.1V, 2100mAh) x 2 (up to 13 hours of battery life) ⁱⁱⁱ LifeSupport™ battery swappable technology
Storage & Memory	4GB DDR3L expandable to 8GB SSD 128GB / 180GB / 256GB	Dimension (W x D x H) & Weight	299 x 223 x 34 mm (11.77" x 8.78" x 1.34"), 1.98Kg (4.36 lbs) ^{iv}
Keyboard	LED backlit membrane keyboard	Rugged Feature	MIL-STD-810G certified and IP65 certified MIL-STD-461F certified^v Optional ANSI/ISA 12.12.01 Vibration & drop resistant e4 Mark certified for vehicle usage
Pointing Device	Touchscreen - Capacitive multi-touch screen - Optional dual mode touchscreen (multi-touch and digitizer) Touchpad - Glide touchpad with multi-touch	Environmental Specification	Temperature ^{vi} : - Operating: -21°C to 60°C / -5.8°F to 140°F - Storage: -40°C to 71°C / -40°F to 160°F Humidity: - 95% RH , non-condensing
Expansion Slot	ExpressCard/54 x 1 Smart card reader x 1	Accessories	Carry bag Battery charger Vehicle adapter (90W, 11-16VDC and 22-32VDC) MIL-STD-461F certified AC adapter (90W, 100-240VAC) Digitizer Pen Capacitive Stylus Protection film X strap Shoulder strap (2-point) Main battery (11.1V, 2100mAh) AC adapter (65W, 100-240VAC) Vehicle cradle Vehicle dock Office dock
I/O Interface	HD webcam x 1 Serial port (9-pin; D-sub) x 1 Headphone out / mic-in Combo x 1 DC in Jack x 1 USB 3.0 (9-pin) x 2 USB 2.0 (4-pin) x1 LAN (RJ45) x 1 HDMI x 1 Docking connector (24-pin) x 1 Optional 5M pixels rear camera x1 Optional RF antenna pass-through for GPS,WLAN and WWAN		

Docking Solutions

	Dimension (W x D x H)	Serial Port	External VGA	Microphone	Audio Output	DC in Jack	USB	LAN	HDMI	RF Antenna Connector (GPS,WWAN,WLAN)
Vehicle Dock	294.6 x 273.1 x 35.1 mm (11.6" x 10.8" x 1.4")	2	1	1	1	1	4	1	1	3
Office Dock	302.6 x 155.6 x 38.3 mm (11.9" x 6.1" x 1.5")	2	1	1	1	1	4	1	1	--

ⁱ Bluetooth performance and connectable distance may be subject to interference with the environments and performance on client devices, users may be able to reduce effects of interference by minimizing the number of active Bluetooth wireless devices that is operating in the area.
ⁱⁱ 13.56MHz Contactless RFID and Smart Card reader (ISO 15693 and 14443 A/B compliant).
ⁱⁱⁱ Battery life testing conducted under MobileMark 2007. Battery performance will vary upon software applications, wireless settings, power management settings, LCD brightness, customized modules and environmental conditions.
^{iv} The battery has a limited number of charge cycles and may eventually need to be replaced by a Getac service provider. Battery life and charge cycles vary by use and settings.
^v Weight varies from configurations and optional accessories.
^{vi} MIL-STD-461F 90W AC adapter sold separately.
^{vii} Tested by a national independent third party test lab following MIL-STD-810G.



Getac Technology Corporation

5F, Building A, No. 209, Section 1, Nangang Rd., Nangang Dist.,
Taipei City, 11568, Taiwan, R.O.C.
Tel: +886 2 2785 7888
globalmarketing@getac.com
www.getac.com



www.esis.com.au
Ph 02 9481 7420
Fax 02 9481 7267
esis.enq@esis.com.au