

# 600/1000A LARGE SPLIT CORE CURRENT TRANSFORMERS



Split-core current transformers provide linear output voltage that is directly proportional to the input current. These transformers are safely and easily installed over existing electrical power lines without disconnecting the lines or interrupting service.

DENT's energy monitoring components are used for a variety of applications including building automation, tenant submetering, performance verification, energy management, and new technology assessment.



KEY SPECIFICATIONS	
Window Size	2.0" (5.1 cm)
Current Range	600A Model: 30 - 780A AC 1000A Model: 20 - 1300A AC
Output	333 mV at rated current
Ratio Error	<1% at rated current (typical)
Phase Error	<2° at rated current (typical)



## ELECTRICAL

Output	333 mV at rated current
Wire Polarity	White = Hi, positive (+) Black = Low, negative (-)
Frequency Range	50 to 400 Hz

## MECHANICAL

Case Material	Epoxy encapsulated housing
Leads	2.7 M (8'), twisted pair, 20 AWG
Operating Temperature	-20° to 55°C (-4° to 131°F)

## SAFETY

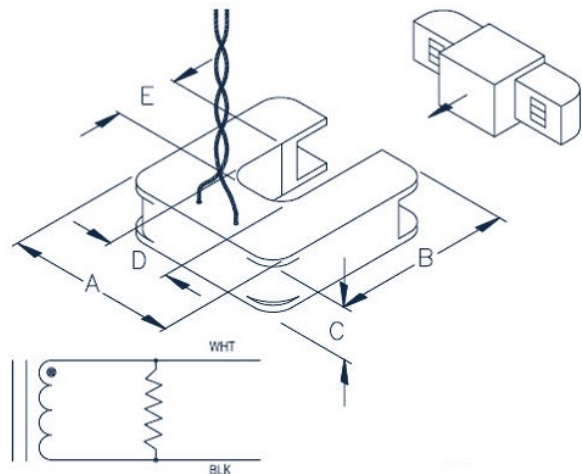
Working Voltage	600 VAC, Category III
Dielectric Strength	5000 VAC around case 600V rated leads
Certification	  Intertek 3101607 Conforms to: UL STD 61010-1 EN 60044-1 Certified to: CAN/CSA STD C22.2 No. 61010-1

## PART NUMBERS

CT-SCL-0600-U/B	600A Large Split Core
CT-SCL-1000-U/B	1000A Large Split Core

## CONTACT US

DENT P/N	NOMINAL RATING (Amps)	USEFUL CURRENT RANGE (Amps)	DIMENSIONS				
			A	B	C	D	E
CT-SCL-0600 CT-SCL-1000	600 1000	30 - 780 20 - 1300	12.07 cm (4.8")	12.70 cm (5.0")	3.05 cm (1.2")	5.1 cm (2.0")	5.08 cm (2.0")



DENT Instruments, Inc.  
Energy & Power Measurement Solutions



[www.esis.com.au](http://www.esis.com.au)  
 Ph 02 9481 7420  
 Fax 02 9481 7267  
 esis.enq@esis.com.au

All specifications contained in this document are subject to change without notice.  
© DENT INSTRUMENTS, INC.  
rev041014