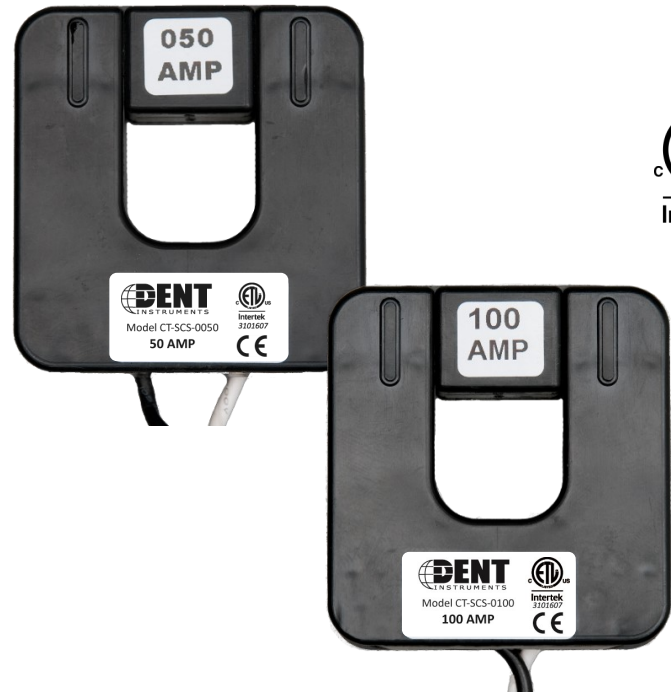


50A/100A SMALL SPLIT CORE CURRENT TRANSFORMERS



Split-core current transformers provide linear output voltage that is directly proportional to the input current. These transformers are safely and easily installed over existing electrical power lines without disconnecting the lines or interrupting service.

DENT's energy monitoring components are used for a variety of applications including building automation, tenant submetering, performance verification, energy management, and new technology assessment.



KEY SPECIFICATIONS

Window Size	0.75" (1.90 cm)
Current Range	50A Model: 5 - 65A AC 100A Model: 2 - 130A AC
Output	333 mV at rated current
Ratio Error	<1% at rated current (typical)
Phase Error	<2° at rated current (typical)

ELECTRICAL

Output	333 mV at rated current
Wire Polarity	White = Hi, positive (+) Black = Low, negative (-)
Frequency Range	50 to 400 Hz

MECHANICAL

Case Material	Epoxy encapsulated housing
Leads	2.7 M (8'), twisted pair, 20 AWG
Operating Temperature	-20° to 55°C (-4° to 131°F)

SAFETY

Working Voltage	600 VAC, Category III
Dielectric Strength	5000 VAC around case 600V rated leads
Certification	Conforms to: UL STD 61010-1 EN 60044-1 Certified to: CAN/CSA STD C22.2 No. 61010-1

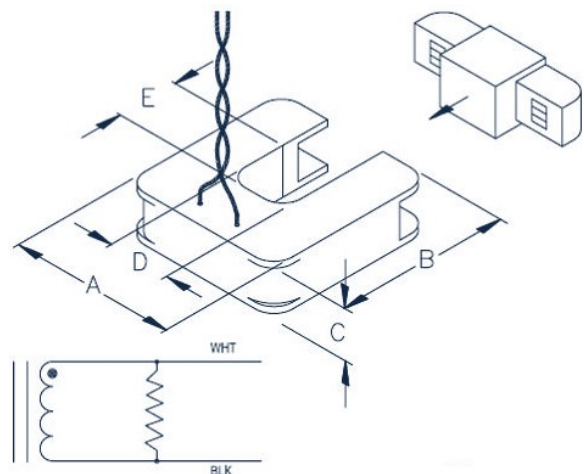


PART NUMBERS

CT-SCS-0050-U/B	50A Small Split Core
CT-SCS-0100-U/B	100A Small Split Core

CONTACT US

DENT P/N	NOMINAL RATING (Amps)	USEFUL CURRENT RANGE (Amps)	DIMENSIONS				
			A	B	C	D	E
CT-SCS-0050	50	5 - 65	5.08 cm (2.0")	5.34 cm (2.1")	1.55 cm (0.6")	1.90 cm (0.75")	1.90 cm (0.75")
CT-SCS-0100	100	2 - 130					



DENT Instruments, Inc.
Energy & Power Measurement Solutions

www.esis.com.au
 Ph 02 9481 7420
 Fax 02 9481 7267
 esis.enq@esis.com.au

All specifications contained in this document are subject to change without notice.
© DENT INSTRUMENTS, INC.
rev041014