

AIMB-224

AMD R-series Quad Core/Dual Core Mini-ITX
with VGA/LVDS/DP++/eDP, 6 COM and Dual LAN

NEW



susiAccess

Features

- Supports AMD Mobile eTrinity Quad core/Dual Core processor
- Two 204-pin SO-DIMM up to 16 GB DDR3 1066/1333/1600 MHz SDRAM
- Supports triple independent display with VGA/LVDS(eDP)/Dual DP++(DP1.2)
- Dual LANs, 6 COM, 2 Mini PCIe
- Supports embedded software APIs and Utilities

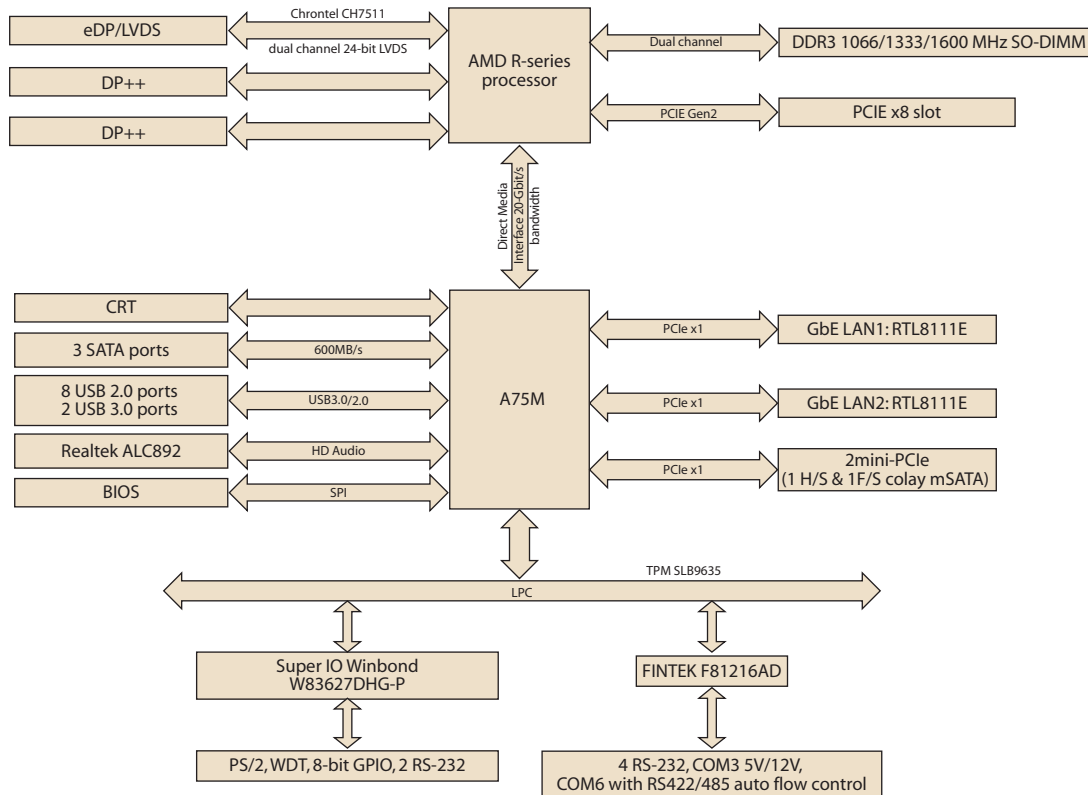
Software APIs: H/W Monitor Watchdog GPIO Brightness

Utilities: BIOS flash Monitoring

Specifications

Processor System	CPU	AMD Quad Core R-464L	AMD Quad Core R-460H	AMD Dual Core R-272F	AMD Dual Core R-268
	Max. Speed	2.3 GHz (Quad core 35W)	1.9 GHz (Quad core 35W)	2.7 GHz (dual core 35W)	2.5 GHz (dual core 35W)
	L2 Cache	1M/per core			
	Chipset	AMD R-series+A75M			
	BIOS	AMI EFI 16 Mbit SPI			
Expansion Slot	PCI	None			
	Mini-PCIe	1 x H/S & 1 x F/S colay mSATA			
	PCIe	PCIe x8			
Memory	Technology	Dual Channel DDR3 1066/1333/1600 MHz			
	Max. Capacity	16 GB/8 GB per SO-DIMM			
	Socket	2 x 204-pin SO-DIMM (Non-ECC)			
Graphics	Controller	AMD Radeon™ GPUs, support DX11, UVD3			
	VRAM	None			
	VGA	Supports up to 4096 x 2400 @ 60 Hz			
	LVDS	Supports dual channel 48 bit up to 1920 x 1200, co-lay eDP (by BOM option)			
	DP++	Two dual model display port, max resolution: 1920 x 1200 @ 60Hz			
Ethernet	Triple Display	Supports triple display with CRT+DP1.2+LVDS or DP1.2+DP1.2+LVDS or CRT+DP1.2+eDP or DP1.2+DP1.2+eDP			
	Interface	10/100/1000 Mbps			
SATA	Controller	GbE LAN1: Realtek 8111E; GbE LAN2: Realtek 8111E			
	Connector	RJ-45 x 2			
	Max Data Transfer Rate	600 MB/s			
Rear I/O	Channel	3			
	VGA	1			
	DP	2			
	Ethernet	2			
	USB	4 (2 USB 3.0 & 2 USB 2.0)			
	Audio	3 (Mic-in, Line-out, Line-in)			
	Serial	1 (RS-232)			
	DCjack	1 (2.5 mm)			
	KB/MB	1			
Internal Connector	LVDS & Inverter	1			
	USB	6 (USB 2.0)			
	Serial	5 (4 x RS-232, 1 x RS-232/422/485; COM 6 support RS-232/422/485 auto flow control; COM 3 support 5V/12V by jumper selection)			
	IDE	None			
	SATA	3			
	Parallel	None			
Watchdog Timer	GPIO	8-bit			
	Output	System reset			
Power Requirement	Interval	Programmable 1 ~ 255 sec/min			
	Typical	Single Voltage 12V DC input by 1x External DC phone Jack or 1x Internal 2x2-pin Power Connector; AT/ATX Supported by Jumper			
		Max power consumption: 90W(R-464L/R-460H+16G DDR3 RAM)			
Environment	Operating			Non-Operating	
	Temperature	0 ~ 60° C (32 ~ 140° F)		-40 ~ 85° C (-40 ~ 185° F)	
Physical Characteristics	Dimensions	170 mm x 170 mm (6.69" x 6.69")			

Block Diagram



Ordering Information

Part Number	Display	LAN	COM	TPM
AIMB-224G2-00A1E	VGA/LVDS/2*DP++	2	6	1

Packing List

Part Number	Description	Quantity
1700018785	Sawa power cable	2
1700003194	SATA HDD cable	2
1700008876	Serial port cable	1
1960061904T000	I/O port bracket	1
2006022410	Startup manual	1
2066022400	Driver CD	1
1960051292N001	CPU cooler (1960051292N001)	1

I/O View



AIMB-224G2-00A1E

Optional Accessories

Part Number	Description
1700003195	USB cable with two ports, 17.5 cm
1700002204	USB cable with two ports, 27 cm
1700008461	USB cable with four ports, 30.5 cm
1757003064	Adapter AC100-240V, 84W, +12V/ 7A FSP

Optional Chassis

Part Number	Description
AIMB-B2000-00YE	Mini-ITX chassis with optional DC Adaptor

Embedded OS/API

OS/API	Part number	Description
Software API	TBD	SUSI V3.0
WES7	2070012188	WIN 7 Embedded
WIN XPE	2070012184	WES2009