



Sense it. Manage it.

FOURTEC

Combining innovation with simplicity, the high accuracy MicroLite USB data logger is a vital tool for monitoring and recording a variety of data. The MicroLite is available in 6 models, offering a unique plug and record data logger for every application and helping organizations maintain the highest standards throughout the cold chain. Real-time sensor readings with corresponding time stamp are clearly displayed on the logger's LCD screen, incorporating alarm thresholds. The logger is designed for low power consumption to extend battery life and reduce the time between battery replacements.



- High accuracy, high functionality, low cost data logger
- Direct USB interface for setup, data download and firmware updates
- Unique weboomerang™ feature that automatically creates and emails PDF data report when logger is connected to PC
- Complimentary DataSuite Software for comprehensive data analysis and logger calibration
- Rapid data download to Graph, Table view and Excel spreadsheet
- LCD featuring up to 3 decimal point readings, min/max data history and battery level
- LED alarm indicator
- Up to 2-year battery life in normal conditions
- 32,000 sample memory accommodating long-haul transports
- Magnet key to mark time stamps, activate and stop logging
- Built-in real-time clock and calendar
- Dust and water resistant, depending on logger model
- Cradle wall mounting for fixed monitoring

www.fourtec.com



ESIS
Industrial Electronics

www.esis.com.au

Ph 02 9481 7420
Fax 02 9481 7267
esis.enq@esis.com.au

MicroLite Solution

PORTABLE CABLE FREE MINI USB DATA LOGGER



TESTING STANDARDS
Ensuring quality control and compliance with safety standards



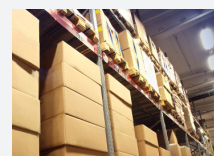
RESEARCH & DEV.
Academic and industrial laboratory research measuring multiple parameters



MILITARY
Storage, equipment maintenance, machinery and production testing



COLD CHAIN
Ensuring quality products throughout the cold chain process



WAREHOUSING
Chemical, industrial and perishables storage

MicroLite Specifications

	LITE5008L LITE5032L Internal Temp	LITE5032L-RH Internal Temp/RH	LITE5032L-4/20 4 to 20 mA	LITE5032L-V 0 to 10 V	LITE5032L-EXT External NTC
Range	-40 to 80 °C	Temp: -40 to 80 °C RH: 5 to 95 %	4 to 20 mA	0 to 10 V	-50 to 150 °C
Accuracy	0 to 60 °C: ±0.3 °C After calibration: -40 to 0 °C: ±0.3 °C 60 to 80 °C: ±0.3 °C	Temp: ±0.3 °C RH: ± 2%	±20 µA	±5 mV	±0.3 °C (after calibration with Fourtec NTC sensor)
Resolution	0.03 °C or better	Temp: 0.01 °C RH: 0.05 %	1 µA (display) 5 µA (software)	1 mV (display) 4 mV (software)	0.02 °C or better
Maximum Load	N/A	N/A	25 mA, 3 V	12 V	N/A
Dew Point	X	√	N/A	N/A	N/A
LCD	√	√	√	√	√
LED Alarm Indicator	√	√	√	√	√
Sampling Memory	8,000 and 32,000	32,000 (16K per channel)	32,000		
Sampling Rate	Once per second / once every 18 hours				
Battery Type / Battery Life	CR2032 3V 2 years, depending on sampling rate and operating conditions				
Operating Environment	-40 to 80 °C				
Dimensions (With Cap)	11 x 3.9 x 2.6 cm	11 x 3.9 x 3 cm	14 x 3.9 x 2.6 cm		
Weight	45.5 g				
Standards Compliance	CE, EN12830, IP67	CE, EN12830, IP54			
Wall Mount	Logger cradle accessory provided				

About Fourtec

Fourtec – Fourier Technologies is a recognized leader in data-logging and monitoring solutions for controlled industrial environments, such as food, pharmaceutical, medical, storage and transportation industries.

Our solutions enable our customers to deliver higher quality products, ensure consumer safety, comply with regulatory requirements and increase profitability. Innovation, expertise and a commitment to quality are the values that drive the development and production of our products.

Fourtec – Fourier Technologies is an associate member of GCCA (Global Cold Chain Alliance). A proven specialist in cold chain management systems, we deliver end-to-end solutions that accompany products from the processing floor to the end user.

Fourtec – Fourier Technologies operates in over 60 countries, through an established network of selected resellers. Fourtec's trusted data acquisition solutions have been implemented globally by many mission critical organisations including NASA, Coca Cola, Qantas, Colgate and TEVA.

Fourtec – Fourier Technologies is a spinoff company based on the industrial division of Fourier Systems, a world leader in data logging, data acquisition and monitoring, with more than 20 years of experience in serving this market.



FOURTEC

www.fourtec.com // info@fourtec.com

©2015 Fourtec – Fourier Technologies Ltd. All rights reserved. Fourtec – Fourier Technologies Ltd. logos and all other Fourtec product or service names are registered trademarks or trademarks of Fourtec – Fourier Technologies Ltd. All other registered trademarks or trademarks belong to their respective companies.
P/N BK191, Rev 5.15



www.esis.com.au
Ph 02 9481 7420
Fax 02 9481 7267
esis.enq@esis.com.au

MicroLite - compact, cost-effective data logging

The MicroLite product line measures temperature, humidity, voltage and current via internal + external inputs. Delivering ultimate application accessibility, the MicroLite is an ideal solution for a variety of industrial cold chain logistics, requiring a small form factor USB data logger.

The comprehensive MicroLite range allows organizations to select the unit most appropriate for their mission-critical environment:

Internal Temperature
LITE5008L / LITE5032L



Internal Temperature & Humidity
LITE5032L-RH



External 4 to 20 mA input
LITE5032L-4/20



External 0 to 10 V input
LITE5032L-V



External NTC 10kΩ input
(with NTC probe)
LITE5032L-EXT



Industrial screw-to-wire interface located inside logger cap allows direct data transfer from external sensors to the logger's memory



1
Record data using internal or external sensors



2
USB data download to PDF report with automatic email delivery



3
Data analysis using integrated DataSuite software

MicroLite Case Study



Company:

The company produces additives, fillings and ingredients for the confectionery industry. Their customers include international brand names such as: Pillsbury, Nestle and Unilever.

Challenge:

The company must monitor the product temperature during the production process, to ensure Pasteurization has occurred, in addition to providing documentation proving that the Pasteurization procedure was completed successfully.

Requirements:

- A system that proves that the Pasteurization process was performed according to required standards
- Low-cost, reliable, easy-to-integrate solution.

Solution:

MicroLite External NTC logger – for controlling Pasteurization during the production process.

Result:

Instant ROI for the company due to the intuitive and quick implementation of the MicroLite logger + NTC temperature probe solution, with the user friendly, free DataSuite software.

Method:

- The MicroLite External NTC temperature data logger was added to the machine's existing controller.
- The temperature of the production process is monitored by the MicroLite device, which is connected to the NTC temperature probe.
- After each stage of the production process ends, the MicroLite device is connected via USB to the computer and a PDF report is generated using the DataSuite software.
- The report indicates if there are any deviations from the defined standards.

DataSuite Software for MicroLite

Supported Operating Systems:

Windows® XP SP3/ Vista/ 7/8/8.1/10
(32 and 64 Bit)

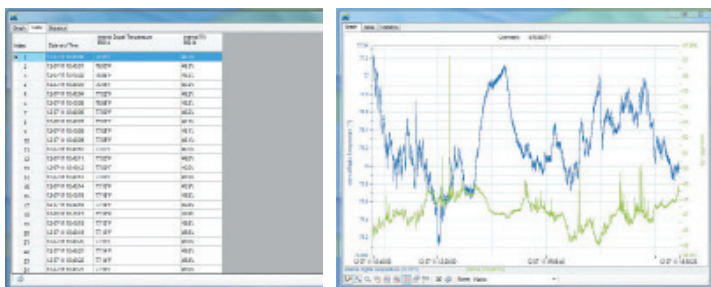
Minimum Hardware Requirements:

Pentium 4, 2 GHz Processor or better,
512 MB RAM,
250 MB available disk space

The license-free DataSuite software provides security for your products with online monitoring and control of the entire application environment.

Data View Features

Real-time data in multiple displays (Graph, Table, Statistics)



weboomerang™ Feature

Configure logger setup to automatically create and email a PDF data report when connected to a computer via USB



DataSuite Boomerang Report

Device Information

Device (Comment): Boomerang

SN: 9130304

Firmware version: 0.94

Battery level: 100%

Last recorded sample time: 06-06-12 16:17:07

Setup Report

No Time Setup

Alarm Report

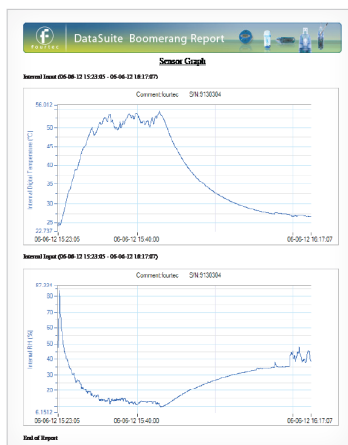
Event Time	Event Type	Description
06-06-12 15:23:36	Offline	
06-06-12 15:28:22	Online	
06-06-12 15:28:27	Online	
06-06-12 15:28:36	Online	
06-06-12 15:28:36	Online	
06-06-12 15:28:36	Online	

Event Report

Event Time	Event Type	Description
06-06-12 15:23:36	Offline	
06-06-12 15:28:22	Online	
06-06-12 15:28:27	Online	
06-06-12 15:28:36	Online	
06-06-12 15:28:36	Online	
06-06-12 15:28:36	Online	

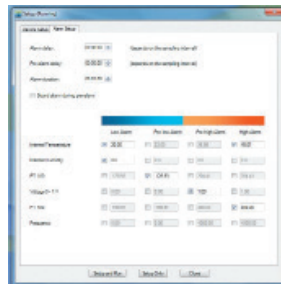
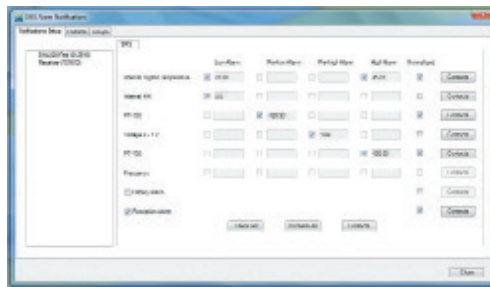
Device Statistics

Sensor Name	Type	Min	Max	Average	Number of samples
Internal Digital Temperature	Internal Digital Temperature	24.35C	34.50C	28.71C	324
Internal RH	Internal RH	8.8%	83.7%	21.2%	324



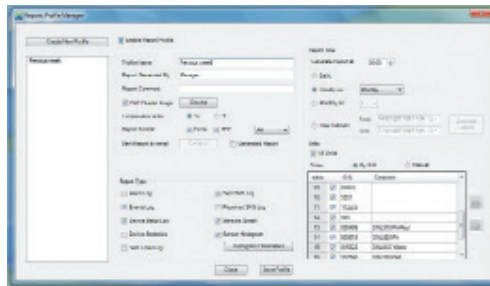
Alarm Features

Alarm level setup with email & SMS notifications. Two alarm levels, allowing for programming of separate parameters, including alarm delay and duration



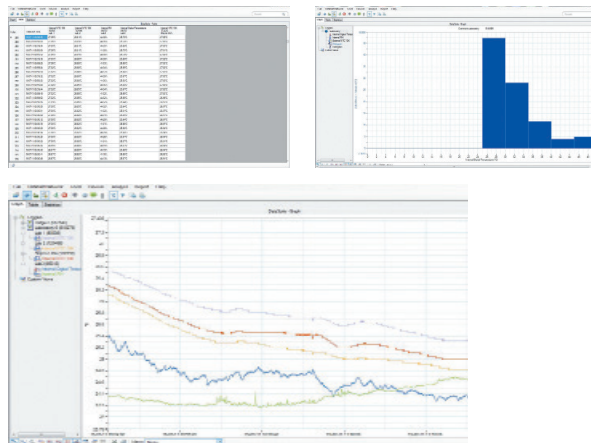
Report Module

The Report module provides the MicroLite user with an intuitive interface for creating and generating reports which have many parameters garnered from the MicroLite units and software. Each report can be emailed to a selected distribution list, at pre-defined time intervals, in PDF and Excel format



Analysis Features

Dew point analysis, FO Pasteurization, histogram, MKT, statistics with export to Excel and CSV formats



FDA Title 21 CFR Part 11 Compliant

DatPass: DatPass is a user administration software which supports the assignment of passwords and operating privileges for all Fourtec industry application software ensuring CFR compliancy.
CFR is a Food and Drug Administration (FDA) issued regulation (Title 21 Code of Federal Regulations, Part 11).

Index	Date/Time	User/Password	Action/Function	Application/Module	Status	Notes	Comments
10	2010-12-10 10:10:10	Admin	Log in successful	Application	Success		
11	2010-12-10 10:10:10	Admin	Log out successful	Application	Success		
12	2010-12-10 10:10:10	Admin	Log in successful	Application	Success		
13	2010-12-10 10:10:10	Admin	Log out successful	Application	Success		
14	2010-12-10 10:10:10	Admin	Log in successful	Application	Success		
15	2010-12-10 10:10:10	Admin	Log out successful	Application	Success		
16	2010-12-10 10:10:10	Admin	Log in successful	Application	Success		
17	2010-12-10 10:10:10	Admin	Log out successful	Application	Success		
18	2010-12-10 10:10:10	Admin	Log in successful	Application	Success		
19	2010-12-10 10:10:10	Admin	Log out successful	Application	Success		
20	2010-12-10 10:10:10	Admin	Log in successful	Application	Success		
21	2010-12-10 10:10:10	Admin	Log out successful	Application	Success		
22	2010-12-10 10:10:10	Admin	Log in successful	Application	Success		
23	2010-12-10 10:10:10	Admin	Log out successful	Application	Success		
24	2010-12-10 10:10:10	Admin	Log in successful	Application	Success		
25	2010-12-10 10:10:10	Admin	Log out successful	Application	Success		
26	2010-12-10 10:10:10	Admin	Log in successful	Application	Success		
27	2010-12-10 10:10:10	Admin	Log out successful	Application	Success		
28	2010-12-10 10:10:10	Admin	Log in successful	Application	Success		
29	2010-12-10 10:10:10	Admin	Log out successful	Application	Success		
30	2010-12-10 10:10:10	Admin	Log in successful	Application	Success		
31	2010-12-10 10:10:10	Admin	Log out successful	Application	Success		
32	2010-12-10 10:10:10	Admin	Log in successful	Application	Success		
33	2010-12-10 10:10:10	Admin	Log out successful	Application	Success		
34	2010-12-10 10:10:10	Admin	Log in successful	Application	Success		
35	2010-12-10 10:10:10	Admin	Log out successful	Application	Success		
36	2010-12-10 10:10:10	Admin	Log in successful	Application	Success		
37	2010-12-10 10:10:10	Admin	Log out successful	Application	Success		
38	2010-12-10 10:10:10	Admin	Log in successful	Application	Success		
39	2010-12-10 10:10:10	Admin	Log out successful	Application	Success		
40	2010-12-10 10:10:10	Admin	Log in successful	Application	Success		
41	2010-12-10 10:10:10	Admin	Log out successful	Application	Success		
42	2010-12-10 10:10:10	Admin	Log in successful	Application	Success		
43	2010-12-10 10:10:10	Admin	Log out successful	Application	Success		
44	2010-12-10 10:10:10	Admin	Log in successful	Application	Success		
45	2010-12-10 10:10:10	Admin	Log out successful	Application	Success		
46	2010-12-10 10:10:10	Admin	Log in successful	Application	Success		
47	2010-12-10 10:10:10	Admin	Log out successful	Application	Success		
48	2010-12-10 10:10:10	Admin	Log in successful	Application	Success		
49	2010-12-10 10:10:10	Admin	Log out successful	Application	Success		
50	2010-12-10 10:10:10	Admin	Log in successful	Application	Success		

DatPass Audit Trail