

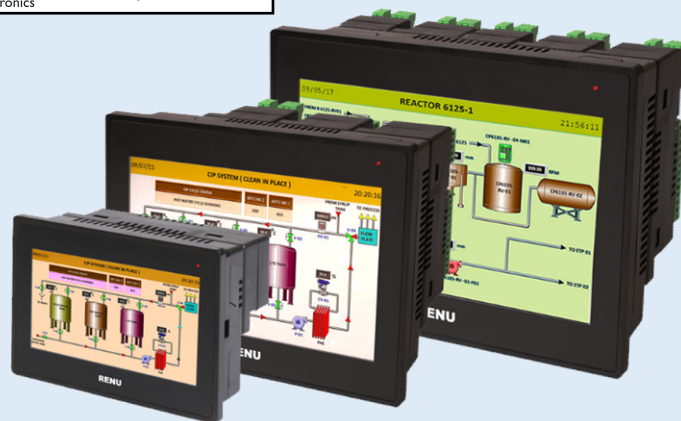
FlexiPanels® FP2 Series HMI with I/Os



www.esis.com.au
 Ph 02 9481 7420
 Fax 02 9481 7267
esis.enq@esis.com.au

SALIENT FEATURES

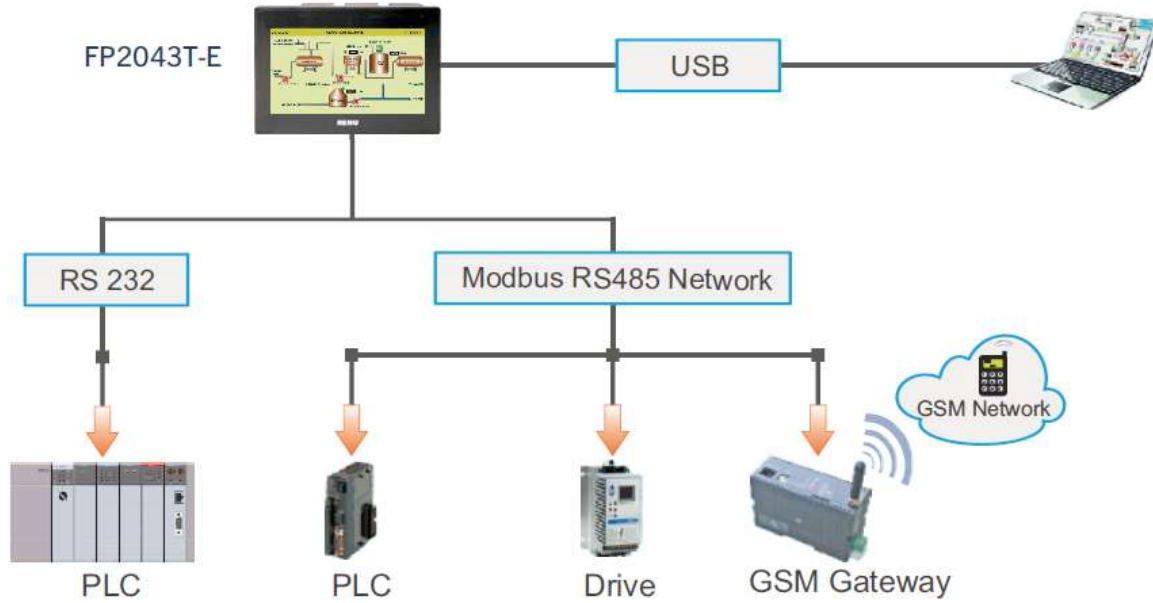
- 4.3", 7" and 10.1" Color TFT display options
- Pluggable I/O Module Support
- Suitable for basic applications, trending, tasks, alarms, Data logging, IEC 61131-3 programming environment
- RAM: 16MB
- Approvals: CE, UL Class I Div 2, RoHS, IP66



MODEL COMPARISON

Part Number	FP2043T-E	FP2043TN-E	FP2070T-E	FP2070TN-E	FP2101T-E	FP2101TN-E
Size	4.3" WQVGA Color TFT		7" WVGA Color TFT		10.1" WSVGA Color TFT	
Resolution	480 x 272 pixels		800 x 480 pixels		1024 x 600 pixels	
Touch Screen	Analog Resistive					
CPU and Power						
CPU	32-bit RISC processor					
RAM	16MB					
Power Supply	24VDC (±15%)					
RTC	Built-in					
Communication						
Serial	1 x RS232, RS485#		2 x RS232/RS485		2 x RS232/RS485	
USB Device	1x USB C type					
USB Host	1x 2.0					
Ethernet	NA	1x 10/100Mbps	NA	1x 10/100Mbps	NA	1x 10/100Mbps
Pluggable I/O						
	1		3		5	
Environment & Approvals						
Operating Temperature	0°C to 50°C					
Storage Temperature	-20°C to 85°C					
Humidity	10 to 90% (Noncondensing)					
Shock	IEC 60068-2-27, 25g, 11ms, 6 shocks per axis, total 18 shocks (X, Y, Z)					
Vibration	5~150Hz, 3g peak, (X, Y, Z)					
Protection	IP66 for front panel mounting					
Approvals	CE, UL(Class 1 Div.2), RoHS Compliant					

FP2043-E consist of one DB9 port that supports RS232 and RS485 levels on different pins. "Y" type cable can be used for separate RS232 and RS485 levels simultaneously



ORDERING INFORMATION

Models	Description
FP2043T-E	4.3" TFT, 24VDC, 2 Serial ports# (1 RS232, 1 RS485), 1 USB Device, 1 USB Host, 1 Pluggable I/O Module
FP2043TN-E	4.3" TFT, 24VDC, 2 Serial ports# (1 RS232, 1 RS485), 1 USB Device, 1 USB Host, 1 Ethernet, 1 Pluggable I/O Module
FP2070T-E	7" TFT, 24VDC, 2 Serial ports (RS232 / RS485), 1 USB Device, 1 USB Host, 3 Pluggable I/O Modules
FP2070TN-E	7" TFT, 24VDC, 2 Serial ports (RS232 / RS485), 1 USB Device, 1 USB Host, 1 Ethernet, 3 Pluggable I/O Modules
FP2101T-E	10.1" TFT, 24VDC, 2 Serial ports (RS232 / RS485), 1 USB Device, 1 USB Host, 5 Pluggable I/O Modules
FP2101TN-E	10.1" TFT, 24VDC, 2 Serial ports (RS232 / RS485), 1 USB Device, 1 USB Host, 1 Ethernet, 5 Pluggable I/O Modules

FP2043-E consist of one DB9 port that supports RS232 and RS485 levels on different pins. "Y" type cable can be used for separate RS232 and RS485 levels simultaneously.

SUPPORTING OBJECTS

Drawing Tools
Line, Rectangle, Ellipse
Rounded Rectangle
Text, Multilingual text
Picture

Data Entry / Data Display
Numeric data
Bit data

Advanced Objects
Buttons
Lamps
Bargraph
Multiple Bargraph
Analog Meter
Alarm
Numeric Keypad
ASCII Keypad
Custom Keypad
Trends

Supported Tasks
Button specific tasks
Global tasks
Screen specific tasks
Data exchange tasks

Clock Objects
Time
Date

	FPEM-1616P	FPEM-1614RP	FPEM-1212P-A0200L	FPEM-1212RP-A0200L
Power Supply	Powered from FP2 base Modules			
DC Inputs	16 (Sinking)	16 (Sinking)	12 (Sinking)	12 (Sinking)
High Speed Inputs	2, 32 Bit, 200kHz	2, 32 Bit, 200kHz	2, 32 Bit, 200kHz	2, 32 Bit, 200kHz
DC Outputs	16 PNP	12 Relay, 2 PNP	12 PNP	10 Relay, 2 PNP
High Speed Pulse Outputs	2, Normal PWM Mode: 1kHz, Fixed Pulse Mode: 5kHz	2, Normal PWM Mode: 1kHz, Fixed Pulse Mode: 5kHz	2, Normal PWM Mode: 1kHz, Fixed Pulse Mode: 5kHz	2, Normal PWM Mode: 1kHz, Fixed Pulse Mode: 5kHz
Analog Inputs	NA	NA	Linear Type 2 Inputs, Voltage Inputs [16 Bit]: 0 to 10VDC, 0 to 5VDC	Linear Type 2 Inputs, Voltage Inputs [16 Bit]: 0 to 10VDC, 0 to 5VDC
			Current Inputs [16 Bit]: 0 to 20mA, 4 to 20mA	Current Inputs [16 Bit]: 0 to 20mA, 4 to 20mA
Analog Outputs	NA	NA	NA	NA
Isolation	Digital: Isolated from 24VDC power			
	Analog: Non-Isolated from 24VDC power and Communication, USB ground			
Operating Temperature	0°C to 50°C (While using FPEM Modules with FP2 Base models)			
Storage Temperature	-20°C to 85°C			
Humidity	10 to 90% non condensing			
Approvals	CE, UL Class I Div 2			
Dimensions (mm)	48W x 108H x 41D			

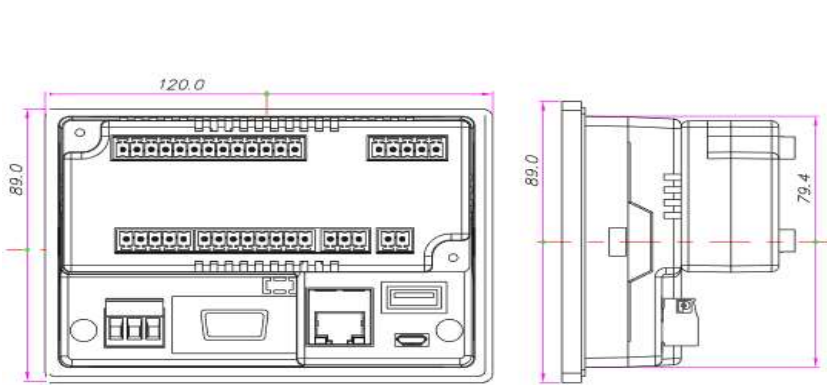
Pluggable Expansion Modules Comparison

	FPEM-1210P-A0201L	FPEM-1210RP-A0201L	FPEM-0808P-A0401U	FPEM-0808RP-A0401U
Power Supply	Powered from FP2 base Modules			
DC Inputs	12 (Sinking)	12 (Sinking)	8 (Sinking)	8 (Sinking)
High Speed Inputs	2, 32 Bit, 200kHz	2, 32 Bit, 200kHz	2, 32 Bit, 200kHz	2, 32 Bit, 200kHz
DC Outputs	10 PNP	8 Relay, 2 PNP	8 PNP	6 Relay, 2 PNP
High Speed Pulse Outputs	2, Normal PWM Mode: 1kHz, Fixed Pulse Mode: 5kHz	2, Normal PWM Mode: 1kHz, Fixed Pulse Mode: 5kHz	2, Up-to 200kHz each	2, Up-to 200kHz each
Analog Inputs	Linear Type 2 voltage Inputs [16 bit]: 0 to 10VDC, 0 to 5VDC	Linear Type 2 voltage Inputs [16 bit]: 0 to 10VDC, 0 to 5VDC	Universal Type 4 Inputs, Voltage Inputs [16 Bit]: 0 to 10VDC, 0 to 5VDC, 0 to 50mV, 0 to 100mV, RTD - PT100, Thermocouple J & K type	Universal Type 4 Inputs, Voltage Inputs [16 Bit]: 0 to 10VDC, 0 to 5VDC, 0 to 50mV, 0 to 100mV, RTD - PT100, PT1000, Thermocouple J & K type
	2 Current Inputs [16 Bit]: 0 to 20mA, 4 to 20mA	2 Current Inputs [16 Bit]: 0 to 20mA, 4 to 20mA	4 Current Inputs [16 Bit]: 0 to 20mA, 4 to 20mA	4 Current Inputs [16 Bit]: 0 to 20mA, 4 to 20mA
Analog outputs	1 Voltage / Current Output [12 Bit]: 4 to 20mA, 0 to 10VDC	1 Voltage / Current Output [12 Bit]: 4 to 20mA, 0 to 10VDC	1 Voltage / Current Output [12 Bit]: 4 to 20mA, 0 to 10VDC	1 Voltage / Current Output [12 Bit]: 4 to 20mA, 0 to 10VDC
Isolation	Digital: Isolated from 24VDC power			
	Analog: Non-Isolated from 24VDC power and Communication, USB ground			
Operating Temperature	0°C to 50°C (While using FPEM Modules with FP2 Base models)			
Storage Temperature	-20°C to 85°C			
Humidity	10 to 90% non condensing			
Approvals	CE, UL Class I Div 2			
Dimensions (mm)	48W x 108H x 41D			

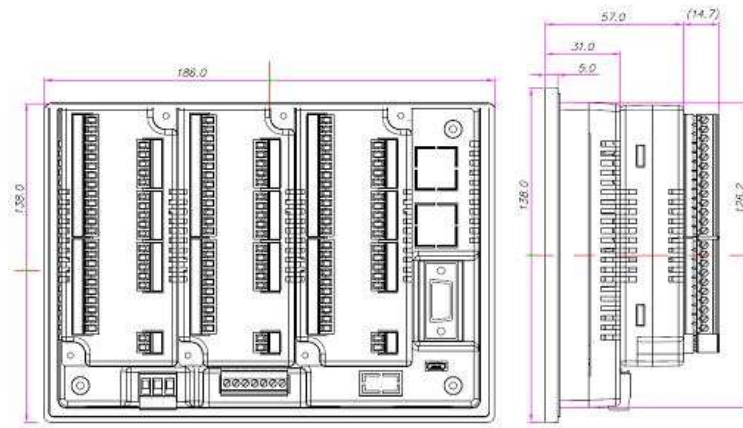
	FPEM-0404P-A0402U	FPEM-0806P-A0402U
Power Supply	Powered from FP2 base Modules	
DC Inputs	4 (Sinking & Sourcing)	8 (Sinking & Sourcing)
High Speed Inputs	2, 32 Bit, 200kHz	2, 32 Bit, 200kHz
DC Outputs	4 PNP	6 PNP
High Speed Pulse Outputs	2, Up-to 200kHz each	2, Up-to 200kHz each
Analog Inputs	Universal Type 4 Inputs, Voltage Inputs [16 Bit]: 0 to 10VDC, 0 to 5VDC, 0 to 50mV, 0 to 100mV, RTD- PT100, Thermocouple J & K type	Universal Type 4 Inputs, Voltage Inputs [16 Bit]: 0 to 10VDC, 0 to 5VDC, 0 to 50mV, 0 to 100mV, RTD- PT100,PT1000, Thermocouple J & K type
	Current Inputs: 0 to 20mA, 4 to 20mA	Current Inputs: 0-20mA, 4-20mA
Analog Outputs	2 Voltage / Current Output [12 Bit]: Current: 0 to 20mA, 4 to 20mA Voltage: 0 to 5VDC, 0 to 10VDC	2 Voltage / Current Output [12 Bit]: Current: 0 to 20mA, 4 to 20mA Voltage: 0 to 5VDC, 0 to 10VDC
Isolation	Digital: Isolated from 24VDC power	
	Analog: Non-Isolated from 24VDC power and Communication, USB ground	
Operating Temperature	0°C to 50°C (While using FPEM Modules with FP2 Base models)	
Storage Temperature	-20°C to 85°C	
Humidity	10 to 90% non condensing	
Approvals	CE, UL (Class I Div 2)	
Dimensions (mm)	48W x 108H x 41D	

Allen Bradley DF1
Panasonic FP Series
Baldor
Danfoss Drive
Delta PLCs
Fatek PLCs
FlexiLogics Master Driver
FlexiLogics Slave Driver
G9SP Safety Controller
GE SNP
GE SNP-X
Idec PLCs
Keyence KV Series
LG Master K Series PLC
LG Master-K 300S
Mitsubishi FX
Mitsubishi Q series PLCs (Serial)
Modbus ASCII (Unit as Master)
ABB PLCs

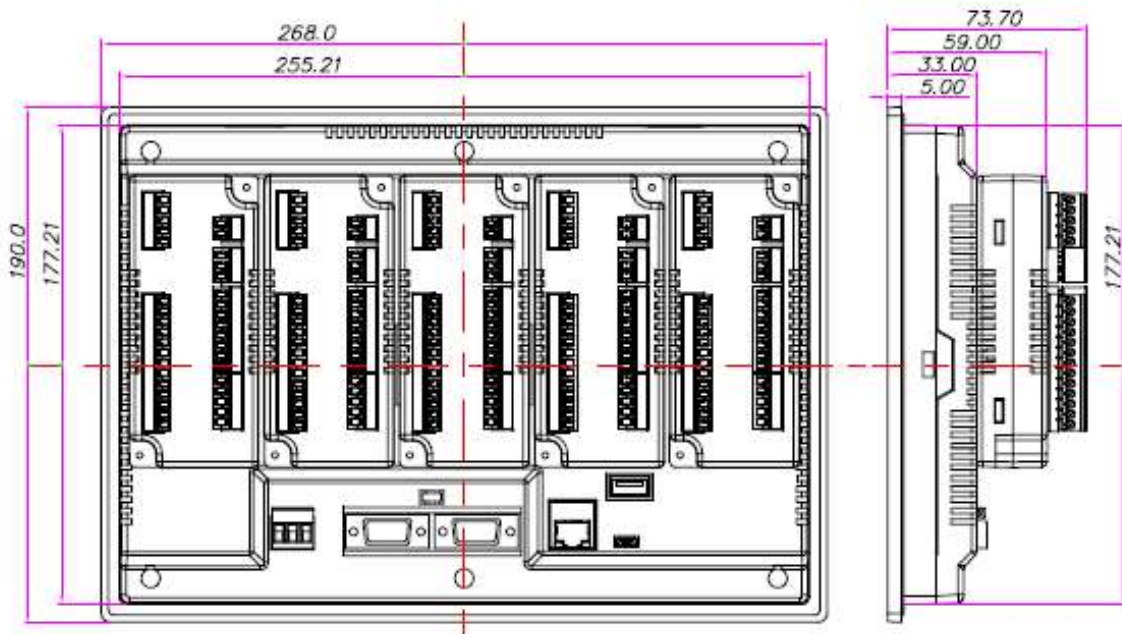
Modbus RTU (Unit as Master)
Modbus RTU (Unit as Slave)
Modbus/TCP Master (Client)
Modbus/TCP Server (Slave)
Omron Host Link
Omron Inverter Modbus
Siemens Micromaster Driver (USS)
Siemens Step-7 Micro
Siemens Profinet PLCs
Toshiba (Link Port) Series PLCs
Toshiba Inverters PLC
Toshiba T Series
Toshiba PLC Ethernet Driver
Twido PLCs
Unitelway PLCs
Universal Serial Driver (ASCII)
Tri PLC
AB PLC EIP PCCC
Logix 5000 PLCs
Universal Ethernet Driver (ASCII)



FP2043-E





FP2070-E



FP2101-E

Please contact factory for more information. We welcome an opportunity to develop new, custom drivers and customized units.

 <p>RENU making humans efficient</p>	<p>HEAD OFFICE Survey No. 2/6, Baner Road, Pune - 411045, India. Tel : +91 20 2729 2840 - 46 Email : info@renuelectronics.com</p>	<p>FACTORY Gat No. 1163, Ghotawade, Tal - Mulshi, Pune - 412115, India. Tel: +91 20 6687 2900</p>	 <p>ESIS Industrial Electronics</p> <p>www.esis.com.au Ph 02 9481 7420 Fax 02 9481 7267 esis.enq@esis.com.au</p>
--	--	--	---

(Specifications subject to change without prior notice. DS-FP2-Rev.D)